

La **Cepa Verificada CECT** es un material de referencia recomendado por Normas Internacionales de Calidad como microorganismo control y que ha sido objeto de ensayo en la CECT con los resultados que se muestran en este certificado.

**CECT Verified Strain** is a reference material recommended as testing microorganism in International Quality Standards, and assayed at CECT with the results shown in this certificate.

## CHARACTERIZATION

### Miniaturized biochemical test API 20E

|      |     |     |     |     |                  |     |     |     |     |     |     |     |     |     |     |     |     |     |     |    |
|------|-----|-----|-----|-----|------------------|-----|-----|-----|-----|-----|-----|-----|-----|-----|-----|-----|-----|-----|-----|----|
| +    | -   | +   | -   | -   | -                | -   | -   | +   | *   | -   | +   | +   | -   | +   | +   | -   | +   | *   | +   | -  |
| 1    | 2   | 4   | 1   | 2   | 4                | 1   | 2   | 4   | 1   | 2   | 4   | 1   | 2   | 4   | 1   | 2   | 4   | 1   | 2   | 4  |
| ONPG | ADH | LDC | ODC | CIT | H <sub>2</sub> S | URE | TDA | IND | VP  | GEL | GLU | MAN | INO | SOR | RHA | SAC | MEL | AMY | ARA | OX |
| 5    |     |     | 0   |     |                  | 4   |     |     | 4/5 |     |     | 5   |     |     | 5   |     |     | 2/3 |     |    |

Identification: 94.7-99.9% ID *Escherichia coli*

\*This result may vary

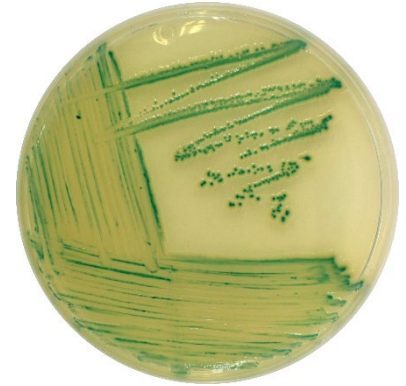
### Growth on selective/differential culture media



**ENDO AGAR**  
Red colonies, red medium,  
golden sheen

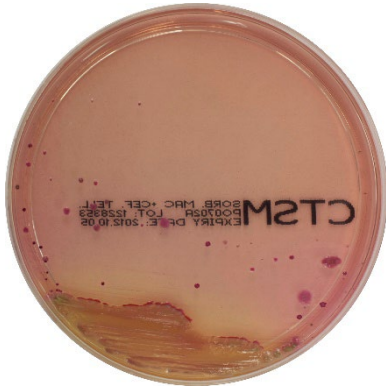


**TERGITOL AGAR**  
Yellow colonies with yellow  
zone. Sometimes with rust  
coloured centre



**TBX (Tryptone Bile X-  
glucuronide) AGAR**  
Blue-green colonies

**Growth on selective/differential culture media**



CTSM (Sorbitol MacConkey agar with Cefixime Tellurite) AGAR  
Pink colonies



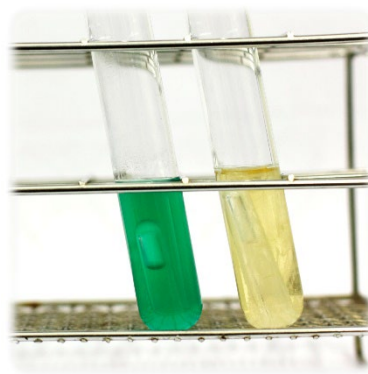
VRBGA (*Violet Red Bile Glucose Agar*) AGAR  
Red-purple colonies surrounded by purple halos



VRBL (*Violet Red Bile Lactose Agar*) AGAR  
Red-purple colonies with or without halos



EC Broth  
Turbidity with gas production



Left: Brilliant Green Bile Lactose Broth  
Right: Laurylsulfate Tryptose Broth  
Both: Turbidity with gas production



MYP (Mannitol Egg Yolk Polymyxin) AGAR  
Growth inhibition