

La **Cepa Verificada CECT** es un material de referencia recomendado por Normas Internacionales de Calidad como microorganismo control y que ha sido objeto de ensayo en la CECT con los resultados que se muestran en este certificado.

**CECT Verified Strain** is a reference material recommended as testing microorganism in International Quality Standards, and assayed at CECT with the results shown in this certificate.

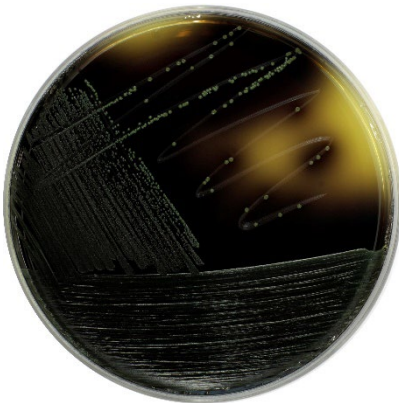
**CHARACTERIZATION**

**Miniaturized biochemical test API LISTERIA**

-	+	+	+	-	+	+	-	-	-
1	2	4	1	2	4	1	2	4	1
DIM	ESC	αMAN	DARL	XYL	RHA	MDG	RIB	G1P	TAG
6			5			1		0	

Identification: 98.6% ID *Listeria monocytogenes*

**Growth on selective/differential culture media**



**OXFORD Formulation**  
Brown-green colored colonies with a black halo (aesculin hydrolysis)



**PALCAM Listeria Selective Agar**  
Grey-green colored colonies with black halo



**Chromogenic Listeria Agar**  
Blue/green colonies with halo