

La **Cepa Verificada CECT** es un material de referencia recomendado por Normas Internacionales de Calidad como microorganismo control y que ha sido objeto de ensayo en la CECT con los resultados que se muestran en este certificado.

CECT Verified Strain is a reference material recommended as testing microorganism in International Quality Standards, and assayed at CECT with the results shown in this certificate.

CHARACTERIZATION

Miniaturized biochemical test API 20A

-	-	+	-	+	+	+	+	-	-	-	+	-	+	+	-	+	-	-	-	-	+	+	-
1	2	4	1	2	4	1	2	4	1	2	4	1	2	4	1	2	4	1	2	4	1	2	4
IND	URE	GLU	MAN	LAC	SAC	MAL	SAL	XYL	ARA	GEL	ESC	GLY	CEL	MNE	MLZ	RAF	SOR	RHA	TRE	CAT	SPO R	GRA M	COC C
4			6			3			4			6			2			0			3		

*This result may vary

Identification: 97,4% ID *Clostridium paraputrificum*

16S rRNA gene sequence analysis: *Clostridium perfringens* 99,9%

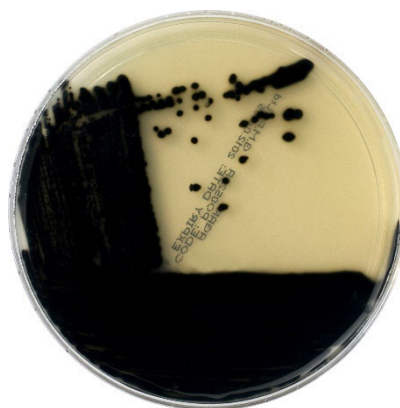
Lactose Broth Base

It ferments lactose with gas production and reduces sulfite

Growth on selective/differential culture media



TRYPTOSE SULPHITE
AGAR (TS)
Black colonies



TRYPTOSE SULPHITE
CYCLOSERINE AGAR (TSC)
Black colonies



SULPHITE POLYMYXIN
SULFADIAZINE AGAR (SPS)
Black colonies