

(End-of-course survey)

CODE: 12-2125

COURSE: M.U. en Ciencias Avanzadas Telecomunicaciones Modernas

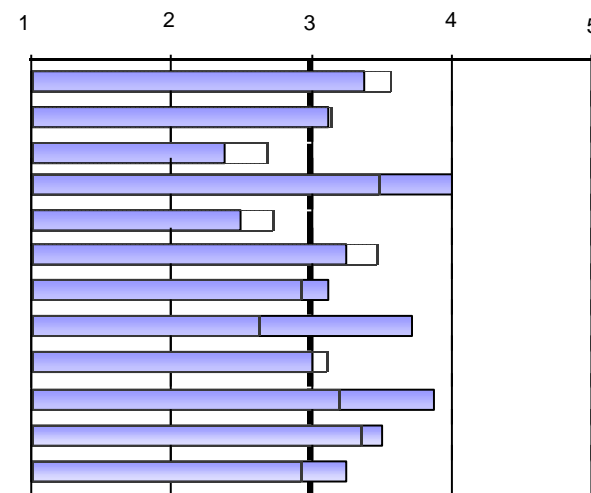
DIRECTORS: Beferull Lozano, Baltasar

ENTITY: Escuela Técnica Superior de Ingeniería

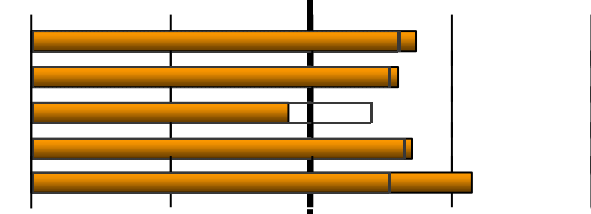
	YES	NO
Are you working while following your Masters course?	1	7
	12,00%	88,00%

	YES	NO
Have you received any kind of scholarship/grant for this Masters course?	0	8
	0,00%	100,00%

EDUCATIONAL PROGRAMME	Frequency responses						
	AVERAGE	N/C	1	2	3	4	5
1.The objectives and graduate profile of the Masters course were described clearly in a transparent way.	3,38	0	1	1	2	2	2
2. The subjects taught during the course and their content were appropriate for the objectives of the Masters	3,12	0	2	0	1	5	0
3. I believe that there has been an appropriate balance between theory and practice during the course.	2,38	0	3	1	2	2	0
4. I believe that the content of the Masters course was different from what I studied during my graduate cour	4,00	0	0	0	2	4	2
5. The sequence of the subjects was satisfactory and avoided gaps and repetitions.	2,50	0	2	3	0	3	0
6. The information in the educational programmes or guides of the subjects was extensive and detailed.	3,25	0	0	3	1	3	1
7. The educational programmes or guides were available before I enrolled.	3,12	0	1	2	2	1	2
8. The organization and management of the Masters course were satisfactory.	3,71	1	0	1	2	2	2
9. The information given to students to manage/organize the Masters course was satisfactory.	3,00	0	1	1	3	3	0
10. The means of communication used to disseminate information of the Masters course were appropriate.	3,88	0	0	2	1	1	4
11. The initial planning and programmed activities were adhered to.	3,50	2	0	1	2	2	1
12. I believe that coordination between teaching staff was satisfactory.	3,25	0	1	1	1	5	0



INFRASTRUCTURES	AVERAGE	N/C	1	2	3	4	5
13. The classrooms and their equipment were appropriate for the Masters course.	3,75	0	0	0	4	2	2
14. The areas set aside for working and studying and their equipment were appropriate for the requirements	3,62	0	0	1	3	2	2
15. The laboratories, workshops and experimental areas and their equipment were appropriate...	2,83	2	1	2	1	1	1
16. I consider that the library and reading room facilities were satisfactory.	3,71	1	1	0	1	3	2
17. The quantity, quality and accessibility of information in the library (...) were appropriate...	4,14	1	1	0	0	2	4



STUDENT TUTORIALS	AVERAGE	N/C	1	2	3	4	5
18. The tutorial needs were met to my satisfaction.	2,50	2	1	2	2	1	0
19. The professors adhered to the schedule established for tutorials.	3,25	4	0	1	1	2	0


 Scale used: 1 to 5 : Global Average

	None	<=1	2-4	5-7	8-10	>=10
20. Total hours spent in tutorials during this course.	0	0	1	1	0	6
	0,00%	0,00%	12,00%	12,00%	0,00%	75,00%

Number of surveys: 8

Students enrolled UV: 16

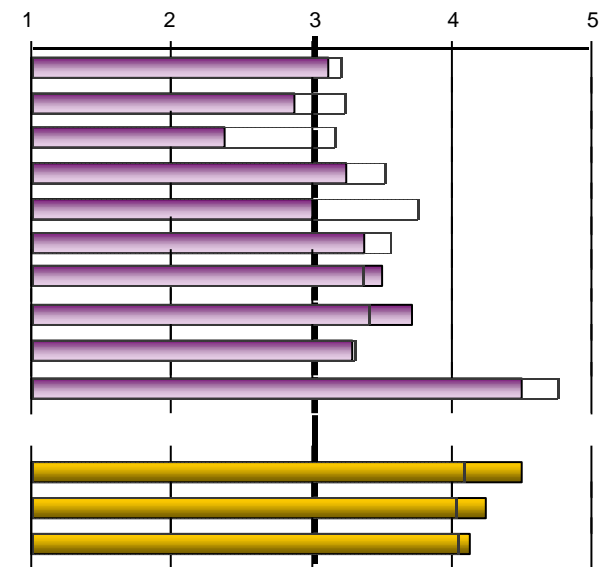
survey date: 08/03/2013 - 31/03/2013

(End-of-course survey)

CODE: 12-2125

COURSE: M.U. en Ciencias Avanzadas Telecomunicaciones Modernas

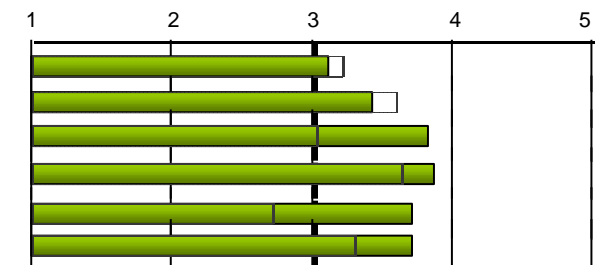
TEACHING/LEARNING PROCESS	MEAN	N/C	Frequency response				
			1	2	3	4	5
21. In general, the teaching methodologies used encouraged students to get involved in the subject.	3,12	0	1	0	4	3	0
22. The teaching/learning methodologies used developed the skills of analysis and synthesis.	2,88	0	0	3	3	2	0
23. The practical work in the modules adequately supported the theoretical element.	2,38	0	1	4	2	1	0
24. The recommended course material was appropriate for educational requirements.	3,25	0	2	1	1	1	3
25. The bibliography of the different modules was appropriate and up-to-date.	3,00	1	1	2	1	2	1
26. The initial work schedule was fulfilled satisfactorily with regard to course contents, dates for handing in	3,38	0	0	3	1	2	2
27. The knowledge, skills and approaches proposed in the educational guides or programmes were properly	3,50	2	0	1	2	2	1
28. In general, the appraisal procedures and criteria were in line with the proposed objectives.	3,71	1	1	1	0	2	3
29. The standard demanded in the appraisal was in line with the teaching given.	3,29	1	0	0	5	2	0
30. I regularly attended the 'in situ' classes and other activities programmed in the Masters course.	4,50	2	0	0	0	3	3


 Scale used: 1 to 5 : Global Average

TEACHING APPROACH

31. The professors complied with the scheduled timetable.	4,50	0	0	0	0	4	4
32. The professors giving the course demonstrated that they had satisfactory knowledge of the subjects in qu	4,25	0	0	1	1	1	5
33. The professors had a positive attitude towards the students.	4,12	0	0	1	2	0	5
34. Would you exclude any of the professors from the course? (*)	Yes	3	100,00%	No	0	0,00%	

If yes, please state how many:	Nº	1	2
	Freq	1	1


 Scale used: 1 to 5 : Global Average

OVERALL	MEAN	N/C	Frequency response				
			1	2	3	4	5
1.- SATISFACTION WITH THE MARTERS COURSE	3,12	0	0	3	1	4	0
2.- QUALITY OF THE TEACHING STAFF	3,43	1	0	2	1	3	1
3.- RELEVANCE OF THE POSTGRADUATE COURSE	3,83	2	0	1	1	2	2
4.- GOOD VALUE FOR MONEY	3,88	0	0	2	1	1	4
5.- WOULD YOU RECOMMEND THIS POSTGRADUATE COURSE TO OTHER STUDENTS?	3,71	1	0	2	0	3	2
6.- USEFULNESS OF THE POSTGRADUATE COURSE	3,71	1	0	1	1	4	1

(End-of-course survey)

CODE: 12-2125

COURSE: M.U. en Ciencias Avanzadas Telecomunicaciones Modernas

Reasons for which you are doing this Masters course				
To seek promotion at work	To improve job opportunities	Other :	to do the master degree in field of telecommunication engineering and to improve practical skills also	1
3	6		To have a more theoretical viewpoint of telecommunication systems than I did at my past university.	1
38,00%	75,00%		To attain knowledge in the advanced concepts of communications.	1
			It's offered in English.	1

(End-of-course survey)

CODE: 12-2125

COURSE: M.U. en Ciencias Avanzadas Telecomunicaciones Modernas

2027.- Máster Universitario en Ciencias Avanzadas de las Telecomunicaciones Modernas

EVOLUCIÓ		PROGRAMA FORMATIU																	
		1. Objectius de màster i perfil d'egrés		2. Matèries cursades i continguts		3. Proporció entre teoria i pràctica		4. Continguts diferents al grau		5. Seqüència de matèries		6. Informació de programes o guies		7. Disponibilitat de programes o guies docents		8. Gestió i l'organització		9. Informació als estudiants sobre la gestió i organització	
Curs	Recollides	n°enq.	mitjana	n°enq.	mitjana	n°enq.	mitjana	n°enq.	mitjana	n°enq.	mitjana	n°enq.	mitjana	n°enq.	mitjana	n°enq.	mitjana	n°enq.	mitjana
12-13	8	8	3,38	8	3,12	8	2,38	8	4	8	2,5	8	3,25	8	3,12	7	3,71	7	3,71
11-12	6	6	4,17	6	4,17	5	3	6	4,17	6	3,67	6	3,67	6	2,83	5	3,4	5	3,4
10-11	4	4	3,5	3	3,33	4	2	3	4,33	4	2,25	4	2,5	3	3	3	1,67	3	1,67
09-10	4	4	3,5	4	3,75	4	3,5	4	4,25	4	3,25	4	4,5	4	3,25	4	3,5	4	3,5

EVOLUCIÓ		PROGRAMA FORMATIU						INFRAESTRUCTURES												
		10. Mitjans de comunicació		11. Respecte a la planificació inicial i activitats		12. Coordinació entre el professorat		Mitjana Bloc	13. Aules destinades a la docència		14. Espais destinats al treball i estudi		15. Laboratoris, tallers i espais experimentals		16. Infraestructura de la biblioteca		17. Biblioteca i fons documentals		Mitjana Bloc	
Curs	n°enq.	mitjana	n°enq.	mitjana	n°enq.	mitjana		n°enq.	mitjana	n°enq.	mitjana	n°enq.	mitjana	n°enq.	mitjana	n°enq.	mitjana	n°enq.	mitjana	
12-13	8	3,88	6	3,5	8	3,25	3,25	8	3,75	8	3,62	6	2,83	7	3,71	7	4,14			3,64
11-12	6	3,5	6	3,83	6	3,67	3,64	6	4,67	6	4,5	4	4,25	6	4,5	5	3,8			4,37
10-11	4	2,5	4	1,75	4	2,5	2,59	4	3,25	4	3	4	2	3	4,33	3	4			3,22
09-10	4	4	4	3,75	4	3,75	3,79	4	4,5	4	4	4	3	3	3	4	3,75			3,68

EVOLUCIÓ		PROCÉS D'ENSENYAMENT - APRENENTATGE																			
		21. Foment de la implicació dels estudiants		22. Foment de l'anàlisi i la síntesi		23. Pràctiques adequades a la teoria		24. Materials recomanats		25. Bibliografia actualitzada		26. Compliment del calendari de treball		27. Coneixements, habilitats i actituds de les guies		28. Procediments i criteris d'avaluació		29. Nivell d'exigència en l'avaluació		30. Assistència presencial a classes i activitats	
Curs	n°enq.	mitjana	n°enq.	mitjana	n°enq.	mitjana	n°enq.	mitjana	n°enq.	mitjana	n°enq.	mitjana	n°enq.	mitjana	n°enq.	mitjana	n°enq.	mitjana	n°enq.	mitjana	
12-13	8	3,12	8	2,88	8	2,38	8	3,25	7	3	8	3,38	6	3,5	7	3,71	7	3,29	6	4,5	3,26
11-12	6	3,83	6	4,5	5	3,6	6	3,83	5	4,4	6	3,5	6	4,33	6	3,83	6	4,17	6	4,67	4,07
10-11	4	3,5	4	3,25	4	3,25	4	3	4	3,75	4	3,25	4	3,5	4	3	4	3,25	4	5	3,48
09-10	4	3,5	4	3,75	4	3	4	4	4	4,5	4	4	4	4	4	4	4	3,5	4	4,75	3,90

(End-of-course survey)

CODE: 12-2125

COURSE: M.U. en Ciencias Avanzadas Telecomunicaciones Modernas

Curs	ATENCIÓ A L'ESTUDIANT				ACTITUD DOCENT							
	18. Atenció tutorial		19. Compliment de l'horari d'atenció tutorial		Mitjana Bloc	31. Compliment de l'horari previst		32. Coneixement dels temes tractats		33. Actitud cap als estudiants		Mitjana Bloc
	n°enq.	mitjana	n°enq.	mitjana		n°enq.	mitjana	n°enq.	mitjana	n°enq.	mitjana	
12-13	6	2,5	4	3,25	2,80	8	4,5	8	4,25	8	4,12	4,29
11-12	5	4,2	5	4,2	4,20	6	4,83	6	4,83	6	4,33	4,67
10-11	4	3	3	3,33	3,14	4	3,75	4	3,75	4	3,5	3,67
09-10	4	4	4	4,25	4,12	4	4,25	4	4,75	4	4,75	4,58

Curs	GENERAL													
	SATISFACCIÓ DEL MÀSTER		QUALITAT DEL PROFESSORAT		INTERÈS DEL MÀSTER		RELACIÓ QUALITAT/PREU		RECOMANARIA AQUEST POSTGRAU		UTILITAT DEL CURS		Mitjana Bloc	
	n°enq.	mitjana	n°enq.	mitjana	n°enq.	mitjana	n°enq.	mitjana	n°enq.	mitjana	n°enq.	mitjana		
12-13	8	3,12	7	3,43	6	3,83	8	3,88	7	3,71	7	3,71	3,60	
11-12	5	4	6	4,5	6	3,67	6	4,5	6	4,17	6	4	4,14	
10-11	4	3	4	4	3	3	4	3	3	5	3	3,33	3,52	
09-10	3	4,5	3	5	3	4,75	3	5	3	4,25	3	4,25	4,62	

* The block average is calculated by weighting by the number of surveys each item.
 You can find the full description of the item in the individual report.