

## *Escherichia coli*

(Migula 1895) Castellani and Chalmers 1919

**CECT 434; WDCM 00013**

La **Cepa Certificada CECT** es un material de referencia recomendado por Normas Internacionales de Calidad como microorganismo control y que ha sido objeto de ensayo en la CECT con los resultados que se muestran en este certificado.

**CECT Certified Strain** is a reference material recommended as testing microorganism in International Quality Standards, and assayed at CECT with the results shown in this certificate.

### CHARACTERIZATION

#### Miniaturized biochemical test API 20E

+	-	+	+	-	-	-	-	+	-	-	+	+	-	+	+	-	+	-	+	-
1	2	4	1	2	4	1	2	4	1	2	4	1	2	4	1	2	4	1	2	4
ONPG	ADH	LDC	ODC	CIT	H <sub>2</sub> S	URE	TDA	IND	VP	GEL	GLU	MAN	INO	SOR	RHA	SAC	MEL	AMY	ARA	OX
5			1			4			4			5			5			2		

Identification: 99,9% ID *Escherichia coli*

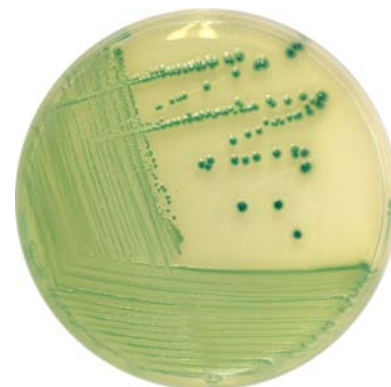
#### Growth on selective/differential culture media



**ENDO AGAR**  
 Red colonies, red medium,  
 golden sheen



**TERGITOL AGAR**  
 Yellow colonies with yellow  
 zone. Sometimes with rust  
 coloured centre



**TBX (Tryptone Bile X-  
 glucuronide) AGAR**  
 Blue-green colonies

***Escherichia coli***

(Migula 1895) Castellani and Chalmers 1919

**CECT 434; WDCM 00013**

**Growth on selective/differential culture media**



CTSM (Sorbitol MacConkey agar with Cefixime Tellurite) AGAR  
 Pink colonies



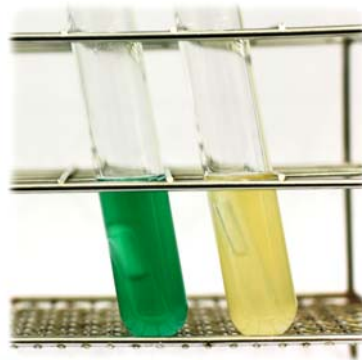
VRBGA (*Violet Red Bile Glucose Agar*) AGAR  
 Red-purple colonies surrounded by purple haloes



VRBL (*Violet Red Bile Lactose Agar*) AGAR  
 Red-purple colonies with or without halos



EC Broth  
 Turbidity with gas production



Left: Brilliant Green Bile Lactose Broth  
 Right: Laurylsulfate Tryptose Broth  
 Both: Turbidity with gas production



MYP (Mannitol Egg Yolk Polymyxin) AGAR  
 Growth inhibition