



# Salmonella enterica subsp. enterica

(ex Kauffmann and Edwards 1952) Le Minor and Popoff 1987

**CECT 443; WDCM 00121**

La **Cepa Certificada CECT** es un material de referencia recomendado por Normas Internacionales de Calidad como microorganismo control y que ha sido objeto de ensayo en la CECT con los resultados que se muestran en este certificado.

**CECT Certified Strain** is a reference material recommended as testing microorganism in International Quality Standards, and assayed at CECT with the results shown in this certificate.

## CHARACTERIZATION

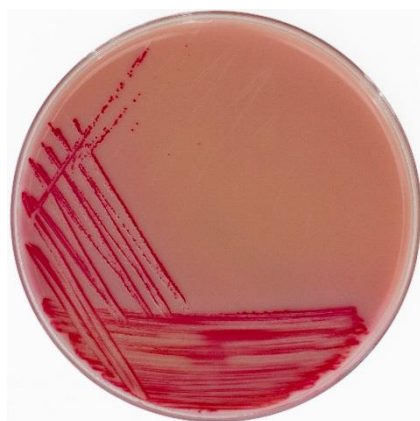
### Miniaturized biochemical test API 20E

-	+	+	+	+	+	-	-	*	*	-	+	+	+	+	+	-	+	-	+	-
1	2	4	1	2	4	1	2	4	1	2	4	1	2	4	1	2	4	1	2	4
ONPG	ADH	LDC	ODC	CIT	H <sub>2</sub> S	URE	TDA	IND	VP	GEL	GLU	MAN	INO	SOR	RHA	SAC	MEL	AMY	ARA	OX
6			7			0 / 4			4 / 5			7			5			2		

\*This result may vary

Identification: 99,9% ID *Salmonella* sp.

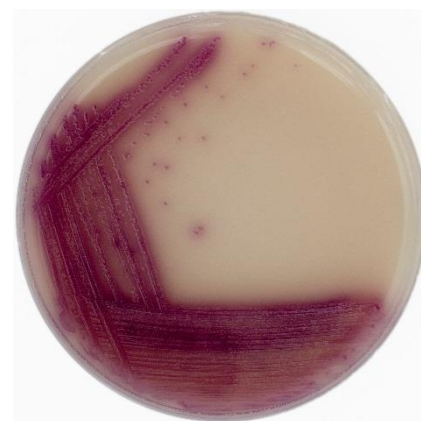
### Growth on selective/differential culture media



RAMBACH agar  
Red colonies



Chromogenic XLD agar  
Red colonies with black centres



Chromogenic OSCM agar  
Magenta colonies