

CERTIFIED



CERTIFICADA

Enterococcus faecalis

(Andrewes and Horder 1906) Schleifer and Kilpper-Bälz 1984

CECT 481; WDCM 00009

La **Cepa Certificada CECT** es un material de referencia recomendado por Normas Internacionales de Calidad como microorganismo control y que ha sido objeto de ensayo en la CECT con los resultados que se muestran en este certificado.

CECT Certified Strain is a reference material recommended as testing microorganism in International Quality Standards, and assayed at CECT with the results shown in this certificate.

CHARACTERIZATION

Miniaturized biochemical test rapid ID 32 STREP

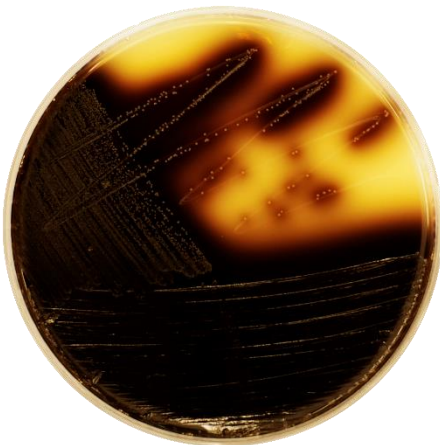
+	+	*	-	-	*	+	+	*	+	+	-	+	-	-	+	*	+
1	2	4	1	2	4	1	2	4	1	2	4	1	2	4	1	2	4
ADH	βGLU	βGAR	βGUR	αGAL	PAL	RIB	MAN	SOR	LAC	TRE	RAF	VP	APPA	βGAL	PYRA	βNAG	GTA
3 / 7			0 / 4			3 / 7			3			1			5 / 7		

*	-	-	+	-	-	+	-	-	+	+	*	-	-
1	2	4	1	2	4	1	2	4	1	2	4	1	2
HIP	GLYG	PUL	MAL	MEL	MLZ	SAC	LARA	DARL	MBDG	TAG	βMAN	CDEX	URE
0 / 1			1			1			3 / 7			0	

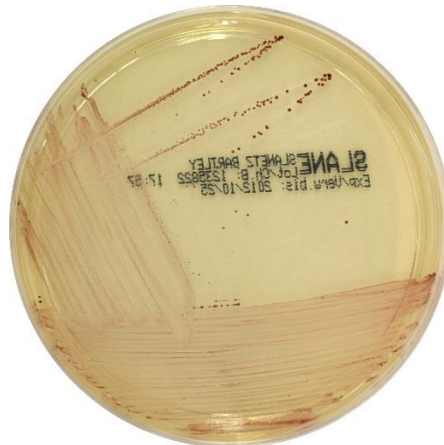
*This result may vary

Identification: 99.6-99.9% ID *Enterococcus faecalis*

Growth on selective/differential culture media



Bile Aesculin Agar
Blackening of medium around colonies



Slanetz-Bartley Agar (with TTC solution 1%)
Red or brown colonies



KF Agar (with TTC solution 1%)
Red or pink colonies, surrounded by a yellow zone