

# *Escherichia coli*

(Migula 1895) Castellani and Chalmers 1919

**CECT 4972; WDCM 00014**

La **Cepa Certificada CECT** es un material de referencia recomendado por Normas Internacionales de Calidad como microorganismo control y que ha sido objeto de ensayo en la CECT con los resultados que se muestran en este certificado.

**CECT Certified Strain** is a reference material recommended as testing microorganism in International Quality Standards, and assayed at CECT with the results shown in this certificate.

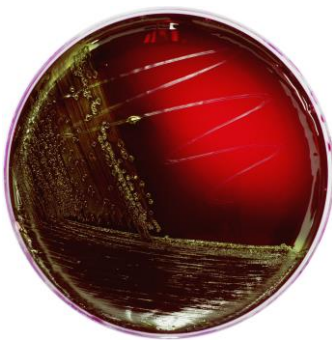
## CHARACTERIZATION

### Miniaturized biochemical test API 20E

+	-	+	+	-	-	-	-	+	-	-	+	+	-	-	+	-	+	-	+	-
1	2	4	1	2	4	1	2	4	1	2	4	1	2	4	1	2	4	1	2	4
ONPG	ADH	LDC	ODC	CIT	H <sub>2</sub> S	URE	TDA	IND	VP	GEL	GLU	MAN	INO	SOR	RHA	SAC	MEL	AMY	ARA	OX
5			1			4			4			1			5			2		

Identification: 97,7% ID *Escherichia coli*

### Growth on selective/differential culture media



**ENDO AGAR**  
 Red colonies, red medium, golden sheen



**TERGITOL AGAR**  
 Yellow colonies with yellow zone. Sometimes with rust coloured centre



**VRBGA (*Violet Red Bile Glucose Agar*) AGAR**  
 Red-purple colonies surrounded by purple haloes



**CTSM (Sorbitol MacConkey agar with Cefixime Tellurite) AGAR**  
 Transparent colonies with a pale yellowish-brown appearance and a diameter ~1 mm