

CERTIFIED



CERTIFICADA

# *Clostridium perfringens*

(Veillon and Zuber 1898) Hauduroy et al. 1937 AL

**CECT 7468; WDCM 00080**

La **Cepa Certificada CECT** es un material de referencia recomendado por Normas Internacionales de Calidad como microorganismo control y que ha sido objeto de ensayo en la CECT con los resultados que se muestran en este certificado.

**CECT Certified Strain** is a reference material recommended as testing microorganism in International Quality Standards, and assayed at CECT with the results shown in this certificate.

## CHARACTERIZATION

### Miniaturized biochemical test API 20A

-	-	+	-	+	+	+	+	-	-	-	+	-	+	+	-	+	-	-	-	-	+	+	-
1	2	4	1	2	4	1	2	4	1	2	4	1	2	4	1	2	4	1	2	4	1	2	4
IND	URE	GLU	MAN	LAC	SAC	MAL	SAL	XYL	ARA	GEL	ESC	GLY	CEL	MNE	MLZ	RAF	SOR	RHA	TRE	CAT	SPO R	GRA M	COC C
4			6			3			4			6			2			0			3		

\*This result may vary

Identification: 97,4% ID *Clostridium paraputrificum*

**16S rRNA gene sequence analysis:** *Clostridium perfringens* 99,9%

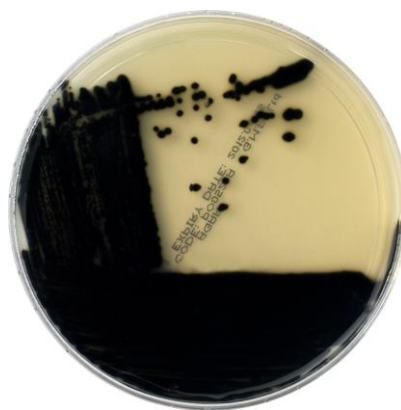
### Lactose Broth Base

It ferments lactose with gas production and reduces sulfite

### Growth on selective/differential culture media



TRYPTOSE SULPHITE  
AGAR (TS)  
Black colonies



TRYPTOSE SULPHITE  
CYCLOSERINE AGAR (TSC)  
Black colonies



SULPHITE POLYMYXIN  
SULFADIAZINE AGAR (SPS)  
Black colonies