

CERTIFIED



CERTIFICADA

# Enterococcus faecalis

(Andrewes and Horder 1906) Schleifer and Kilpper-Bälz 1984

**CECT 8120; WDCM 00085**

La **Cepa Certificada CECT** es un material de referencia recomendado por Normas Internacionales de Calidad como microorganismo control y que ha sido objeto de ensayo en la CECT con los resultados que se muestran en este certificado.

**CECT Certified Strain** is a reference material recommended as testing microorganism in International Quality Standards, and assayed at CECT with the results shown in this certificate.

## CHARACTERIZATION

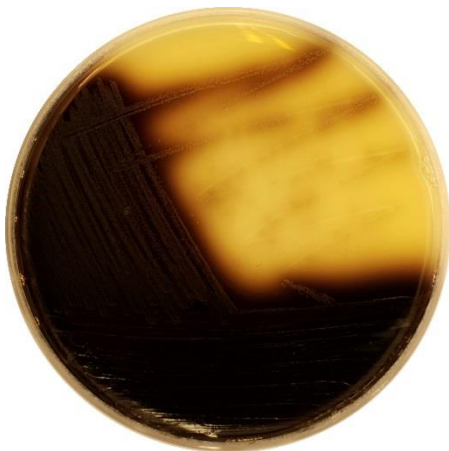
### Miniaturized biochemical test rapid ID 32 STREP

|     |      |      |      |      |     |     |     |     |     |     |     |    |      |      |      |      |     |
|-----|------|------|------|------|-----|-----|-----|-----|-----|-----|-----|----|------|------|------|------|-----|
| +   | +    | -    | -    | -    | +   | +   | +   | +   | +   | +   | -   | +  | -    | -    | +    | +    | +   |
| 1   | 2    | 4    | 1    | 2    | 4   | 1   | 2   | 4   | 1   | 2   | 4   | 1  | 2    | 4    | 1    | 2    | 4   |
| ADH | βGLU | βGAR | βGUR | αGAL | PAL | RIB | MAN | SOR | LAC | TRE | RAF | VP | APPA | βGAL | PYRA | βNAG | GTA |
| 3   |      |      | 4    |      |     | 7   |     |     | 3   |     |     | 1  |      |      | 7    |      |     |

|     |      |     |     |     |     |     |      |      |      |     |      |      |     |
|-----|------|-----|-----|-----|-----|-----|------|------|------|-----|------|------|-----|
| +   | -    | -   | +   | -   | +   | +   | -    | -    | +    | +   | +    | +    | -   |
| 1   | 2    | 4   | 1   | 2   | 4   | 1   | 2    | 4    | 1    | 2   | 4    | 1    | 2   |
| HIP | GLYG | PUL | MAL | MEL | MLZ | SAC | LARA | DARL | MBDG | TAG | βMAN | CDEX | URE |
| 1   |      | 5   |     |     | 1   |     |      | 7    |      |     | 1    |      |     |

Identification: 99.9% ID *Enterococcus faecalis*

### Growth on selective/differential culture media



Bile Aesculin Agar  
Blackening of medium around colonies



Slanetz-Bartley Agar (with TTC solution 1%)  
Red or brown colonies



KF Agar (with TTC solution 1%)  
Red or pink colonies, surrounded by a yellow zone