



## *Listeria innocua*

Seeliger 1983

**CECT 910; WDCM 00017**

La **Cepa Certificada CECT** es un material de referencia recomendado por Normas Internacionales de Calidad como microorganismo control y que ha sido objeto de ensayo en la CECT con los resultados que se muestran en este certificado.

**CECT Certified Strain** is a reference material recommended as testing microorganism in International Quality Standards, and assayed at CECT with the results shown in this certificate.

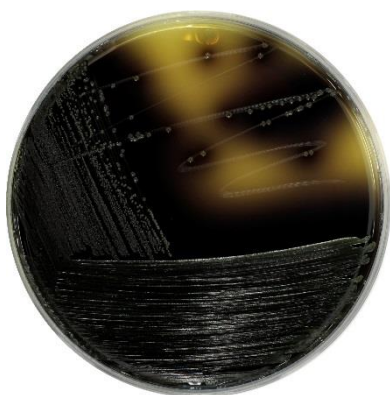
## CHARACTERIZATION

### Miniaturized biochemical test API Listeria

+	+	+	+	-	+	+	-	-	-
1	2	4	1	2	4	1	2	4	1
DIM	ESC	$\alpha$ MAN	DARL	XYL	RHA	MDG	RIB	G1P	TAG
7			5			1		0	

Identification: 99.6% ID *Listeria innocua*

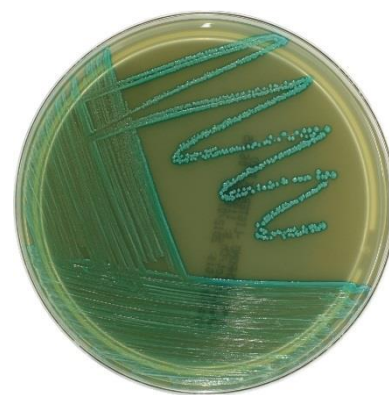
### Growth on selective/differential culture media



**OXFORD Formulation**  
Brown-green colored colonies with a black halo



**PALCAM Listeria Selective Agar**  
Grey-green colored colonies with a black centre and halo



**Chromogenic Listeria Agar**  
Blue/green colonies without halo