

ISUP 2021

INTERNATIONAL SUMMER UNIVERSITY PROGRAMME



CBS



COPENHAGEN BUSINESS SCHOOL
HÅNDELSHØJSKOLEN



"I love about all the international students here, you can find people from Europe and Australia and America and of course, I am from China. So it is a very multicultural background"

YUSHAN

UNIVERSITY OF QUEENSLAND, AUSTRALIA

CBS ISUP 2021

2

INTRODUCTION

3

OUR STUDENTS

4

ACADEMIC INFO

5

COURSES AND
FACULTY

6

SOCIAL
PROGRAMME

7

ACCOMMODATION

8

COPENHAGEN LIFE

9

APPLYING FOR ISUP

IMPORTANT DATES

APPLICATION ROUND FOR INTERNATIONAL STUDENTS

18 FEBRUARY AT 12:00 NOON - 16 FEBRUARY AT 23:59 MIDNIGHT, 2021 (CET)

ARRIVAL DAY

19 JUNE 2021 (ALSO EARLIEST POSSIBLE DAY TO MOVE INTO CBS ACCOMMODATION)

ORIENTATION ACTIVITIES

WELCOME DAY FOR INTERNATIONAL STUDENTS ON 20 JUNE 2021

INTRODUCTION MEETING ON 21 JUNE 2021

COURSE PERIOD

22 JUNE - 23 JULY 2021 (22 JUNE - 8 JULY FOR SHORT COURSES)

EXAM PERIOD

HOME ASSIGNMENT WRITTEN IN PARALLEL WITH THE COURSE: 22 JUNE - 30 JULY 2021

(22 JUNE - 9 JULY 2021 FOR SHORT COURSES)

4 HOUR HOME ASSIGNMENT: 26 JULY - 30 JULY 2021

INTRODUCTION

The International Summer University Programme (ISUP) was established in 1999, and last year the programme celebrated its 20th year.

Today ISUP is one of the largest and oldest summer programmes in Europe and draws more than 2300 students from all over the world to CBS each summer to partake in the around 50 courses offered during the 6 week programme.

Studying at ISUP gives students the opportunity to study at CBS, one of Europe's largest business schools, which has "The Triple Crown" accreditation (EQUIS, AMBA and AACSB), an acknowledgement only shared by around 50 business schools worldwide.

ISUP is more than just studying, it is also about meeting new people, learning new cultures and a unique opportunity to live in one of the most liveable cities in the world - Copenhagen.

ISUP offers all international students a fun-packed cultural and social programme, where you will be introduced to Copenhagen and the Danish culture through specially-arranged activities such as guided city tours of Copenhagen, Danish folk-dancing, comedy night as well as a weekend trip around Denmark.



80 STUDENTS
ACROSS
4 COURSES



OVER 2300 STUDENTS
ACROSS OVER
40 COURSES

CBS IN NUMBERS

FACTS & FIGURES 2019

19,708

STUDENT POPULATION

675

FULL-TIME ACADEMIC STAFF

774

PART-TIME ACADEMIC STAFF

3,984

INTERNATIONAL
FULL DEGREE
STUDENTS

1,029

INTERNATIONAL
EXCHANGE
STUDENTS

675

ADMINISTRATIVE STAFF

296 EXCHANGE AGREEMENTS WORLDWIDE

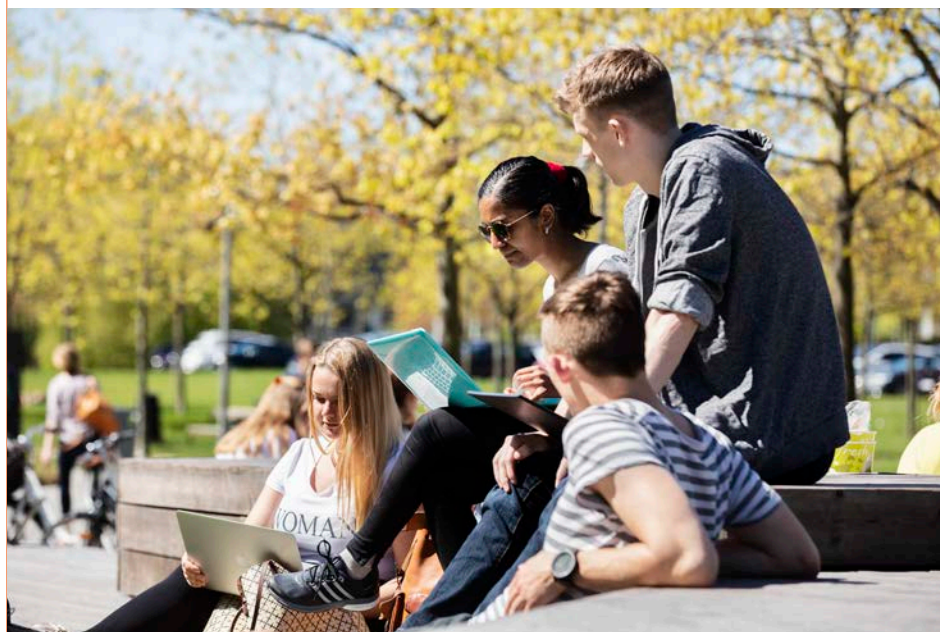


OUR STUDENTS

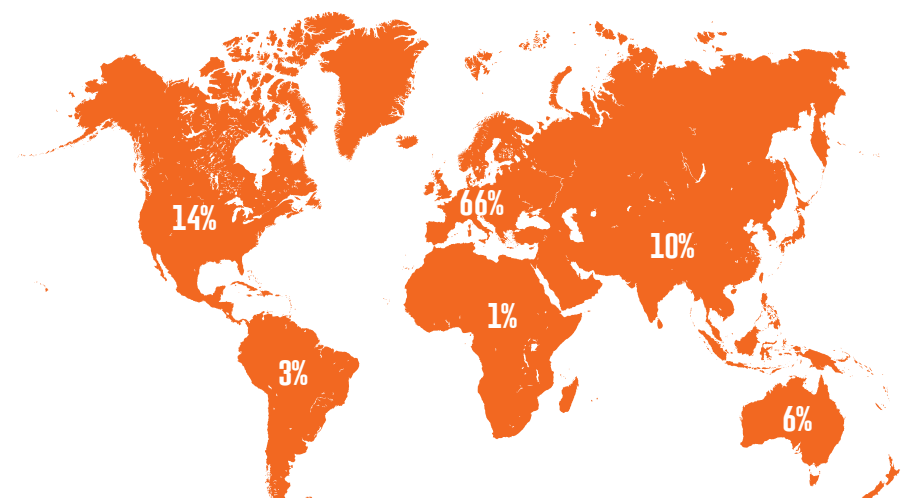


41%
BACHELOR LEVEL
STUDENTS

59%
GRADUATE LEVEL
STUDENTS



DIFFERENT NATIONALITIES ATTENDING ISUP
COMING FROM AROUND THE WORLD*



* INTERNATIONAL STUDENTS



"Such a beautiful setting where people are actually talking a lot and the professors are facilitators, rather than just lectures - which is a very beautiful concept"

RAC4IT
UNIVERSITY OF MASSACHUSETTS
AMHERST, USA

ACADEMIC INFO

6 WEEKS/3 WEEKS

5 WEEKS OF TEACHING + 1 WEEK FOR EXAMS
FOR ORDINARY COURSES
3 WEEKS IN TOTAL FOR SHORT COURSES

AROUND 50

COURSES AT BOTH BACHELOR AND
GRADUATE LEVEL

COURSES WITHIN CLASSIC BUSINESS
DISCIPLINES AS WELL AS MORE DIVERSE AND
INNOVATIVE ACADEMIC AREAS

ALL COURSES ARE TAUGHT IN ENGLISH

22 JUNE

FIRST DAY OF
TEACHING

23 JULY

LAST DAY OF
TEACHING
(8 JULY FOR
SHORT COURSES)

2 COURSES

MAXIMUM PER STUDENT AT ISUP



PERCENTAGE OF
STUDENTS
WHO TAKE 2 COURSES

7.5 ECTS

PER COURSE

COURSE PREREQUISITIES

CHECK THE COURSE CATALOGUE FOR ANY
PREREQUISITIES IN A GIVEN COURSE

30 JULY

LAST DAY FOR
ORDINARY EXAMS
(9 JULY FOR
SHORT COURSES)

FURTHER INFO

GO TO [CBS.DK/ISUP](https://cbs.dk/isup) FOR UP-TO-DATE INFO ON COURSES, FULL ACADEMIC OUTLINE AND ON HOW
TO APPLY

COURSES AND FACULTY

COURSES

WITHIN CLASSIC BUSINESS DISCIPLINES, SUCH AS:

- ACCOUNTING
- COMMUNICATION
- ECONOMICS
- FINANCE
- MANAGEMENT
- MARKETING
- ORGANISATION
- STRATEGY
- STATISTICS

COMBINED WITH COURSES IN MORE DIVERSE DISCIPLINES, SUCH AS:

- CSR AND SUSTAINABILITY
- ENTREPRENEURSHIP
- GLOBALISATION
- INFORMATION TECHNOLOGY
- INNOVATION
- PSYCHOLOGY
- SUPPLY CHAIN MANAGEMENT AND LOGISTICS

11

LECTURES OVER 3
OR 5 WEEKS

33

CLASSROOM
HOURS

TEACHING METHOD

BASED ON IN-CLASS LEARNING COMBINED
WITH CASES AND EXERCISES



206

Student work hours per
course

COURSE APPROVAL

ALL ISUP COURSES ARE APPROVED BY CBS
STUDY BOARDS AND HAVE THE STATUS
OF ELECTIVES FOR ALL CBS FULL DEGREE
PROGRAMMES

PRELIMINARY ASSIGNMENT

IN ALL CLASSES, WHICH PROVIDES STUDENTS WITH AN INCENTIVE TO START LEARNING ABOUT
THE SUBJECT MATTER BEFORE CLASS START

"Globalization isn't just a textbook term to be studied at CBS ISUP. It's intrinsic to the ISUP experience as students and faculty from more than 50 countries share their diverse insight and homegrown perspectives. Long after summer courses has been completed, and memories of Copenhagen have been made, it is this welcoming international spirit that's likely to have also shaped many of tomorrow's global business executives"

JAY RUBIN

ISUP FACULTY MEMBER SINCE 2013
NEW YORK UNIVERSITY, L. STERN SCHOOL OF BUSINESS, USA



INTERNATIONAL FACULTY

FROM UNIVERSITIES SUCH AS MONASH UNIVERSITY (AUSTRALIA), NEW YORK UNIVERSITY - L. STERN SCHOOL OF BUSINESS (USA), TEL AVIV UNIVERSITY (ISRAEL), SHANTOU UNIVERSITY (CHINA), WIRTSCHAFTSUNIVERSITÄT WIEN - VIENNA UNIVERSITY OF ECONOMICS AND BUSINESS (AUSTRIA), ETC.

65%

INTERNATIONAL
FACULTY MEMBERS

4.1 (BACHELOR) & 4.3 (GRADUATE)*

OVERALL STUDENT EVALUATION OF ISUP FACULTY MEMBERS (ON A
SCALE OF 1-5 WITH 5 AS THE BEST POSSIBLE)

* 2020 EVALUATION

FURTHER INFO

GO TO CBS.DK/ISUP FOR UP-TO-DATE INFO ON COURSES, FACULTY MEMBERS, FULL ACADEMIC
OUTLINE, ETC.



"They also have a social programme, where we can go experience Copenhagen as a city and learn new things about Danish culture - the highlight of that has been the Danish folk dancing"

RACHIT
UNIVERSITY OF DELHI, INDIA



SOCIAL PROGRAMME

AROUND 12

DIFFERENT CULTURAL AND SOCIAL ACTIVITIES
SPREAD OVER THE DURATION OF ISUP

DKK 700*

FOR ALL ACTIVITIES INCLUDED IN THE SOCIAL
PROGRAMME (ONLY SOLD AS A PACKAGE
DEAL)

** 2019 PRICE, PLANNED BEFORE GOING ONLINE*

ACTIVITIES

SUCH AS THE BIG WELCOME DINNER, GUIDED
TOURS AROUND COPENHAGEN, DANISH FOLK
DANCING, HISTORIC DAY TRIP, COMEDY
NIGHT AND MANY MORE

WEEKEND TRIP*

AROUND DENMARK IS A UNIQUE OPPORTUNITY
TO EXPLORE DIFFERENT PARTS OF DENMARK,
FROM AARHUS (DENMARK'S 2ND LARGEST
CITY), TO THE TIP OF DENMARK AND
LEGOLAND, ALL IN 1 WEEKEND

** LIMITED SPACES AND SOLD SEPARATELY*

ALL ABOUT

INTRODUCING STUDENTS TO DANISH
CULTURE, COPENHAGEN AND EACH OTHER

FURTHER INFO

GO TO CBS.DK/ISUP FOR MORE INFO ON ISUP SOCIAL PROGRAMME AND OTHER ACTIVITIES
OFFERED IN CONNECTION WITH INTRODUCTION TO ISUP, CBS AND COPENHAGEN

CONTACT OUR SOCIAL PROGRAMME COORDINATORS AT SOCIALISUP.INTOFF@CBS.DK



"I am living in one of the dorms with people from all over the world and we are having the best time getting to know each other, trying each other's food"

ELIZABETH

YORK UNIVERSITY, SCHULICH SCHOOL OF BUSINESS, CANADA



SINGLE ROOM AT KATHRINE KOLLEGIET

ACCOMMODATION

7

19 JUNE

EARLIEST POSSIBLE DATE TO MOVE IN - CHECK-IN TIME IS 12 NOON

6 DORMS

SPREAD ACROSS COPENHAGEN

MOST DORMS ARE LOCATED WITHIN 10-20 MINUTES WALKING DISTANCE FROM THE MAIN CBS CAMPUS

ARRIVAL SERVICE

KEY PICK-UP AT THE AIRPORT AND ASSISTED TRANSPORT TO THE DORMITORIES

ALL DORM ROOMS ARE FULLY FURNISHED AND HAVE ACCESS TO THE INTERNET

DKK 8,500 - 13,500*

PRICE RANGE DEPENDING ON ROOM SIZE, IF IT IS A SINGLE OR SHARED ROOM - THE PRICE IS FOR A 6 WEEK PERIOD (FIXED PERIOD)

*2021 PRICES

CBS

ONLY FACILITATES THE HOUSING, BUT THE DORMS AND THE PAYMENT IS HANDLED BY PRIVATE OWNERS

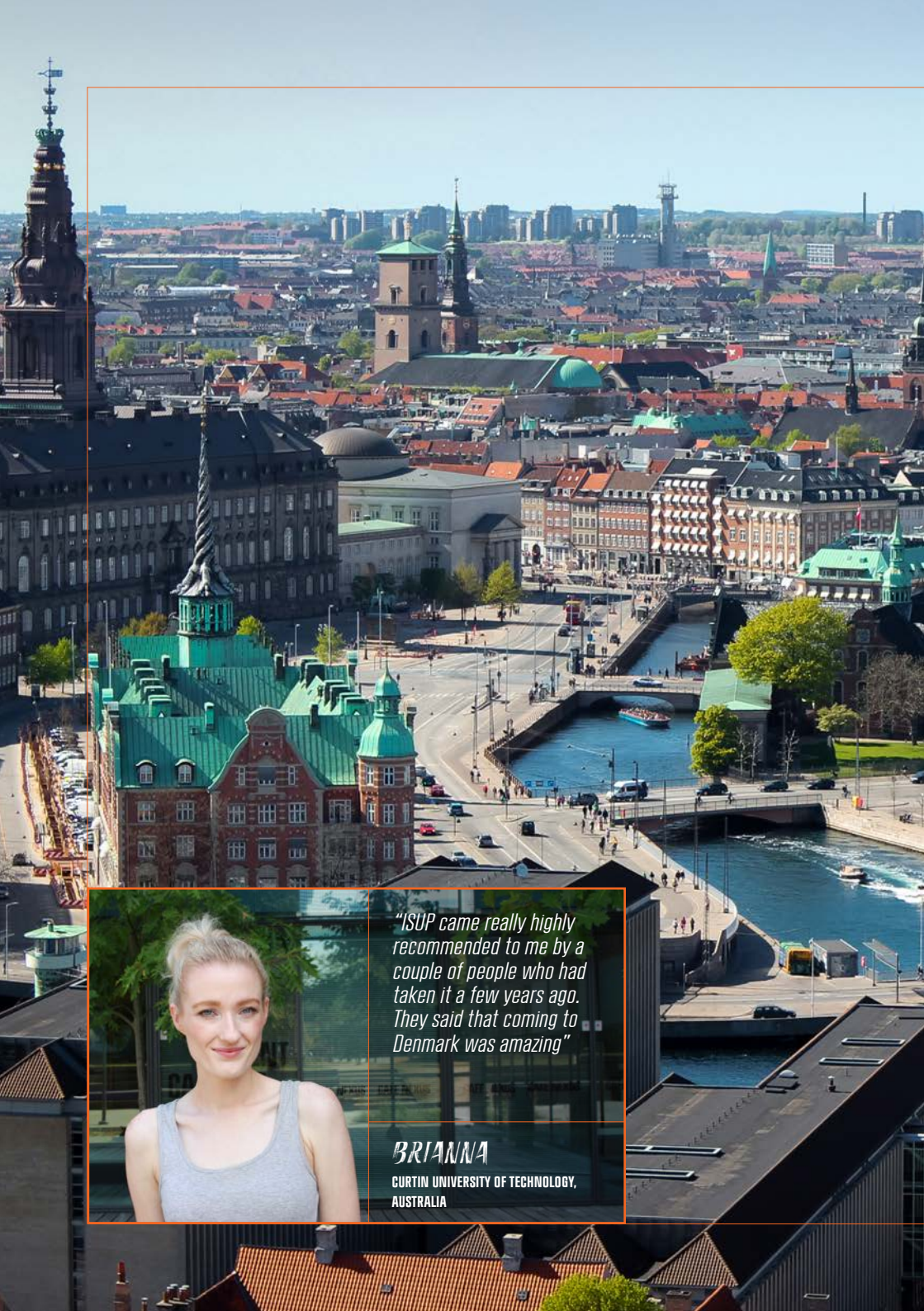
31 JULY

LATEST POSSIBLE DATE TO MOVE OUT - CHECK-OUT TIME IS 12 NOON

FURTHER INFO

GO TO CBS.DK/ISUP FOR MORE INFO ON ACCOMMODATION OFFERS, ROOM SIZES, LATEST PRICES AND EVERYTHING ELSE YOU NEED TO KNOW ABOUT ACCOMMODATION THROUGH CBS

CONTACT CBS HOUSING DEPARTMENT AT HOUSING.INTOFF@CBS.DK FOR MORE INFO



"ISUP came really highly recommended to me by a couple of people who had taken it a few years ago. They said that coming to Denmark was amazing"

BRIANNA

CURTIN UNIVERSITY OF TECHNOLOGY,
AUSTRALIA

COPENHAGEN LIFE

COPENHAGEN

IS KNOWN FOR ITS CHARM AND THE AESTHETIC COMBINATION OF HISTORIC AND MODERN ARCHITECTURE FOUND THROUGHOUT THE CITY

ITS A TRENDSETTING PLACE AND TRULY A COSMOPOLITAN, SAFE AND APPROACHABLE CITY - FROM THE HIPSTER NEIGHBORHOOD OF VESTERBRO, OVER MULTICULTURAL NØRREBRO, MORE FAMILY-FRIENDLY ØSTERBRO TO THE HISTORIC CITY CENTER KNOWN AS 'INDRE BY', COPENHAGEN OFFERS SOMETHING FOR EVERY TASTE

#1

CITY TO SWIM IN
ACCORDING TO CNN

#2

HAPPIEST NATION IN
THE WORLD ACCORDING
TO 'WORLD HAPPINESS
REPORT'



50%+

BIKE TO AND FROM
WORK EVERY DAY

BIKING

IS ONE OF THE EASIEST WAYS TO GET AROUND AND
IS ALMOST A MUST FOR A TRULY COPENHAGEN
EXPERIENCE

EXPLORE

MANY OF THE GREAT ATTRACTIONS COPENHAGEN HAS TO OFFER,
INCLUDING MUSEUMS, TIVOLI AND THE MEATPACKING DISTRICT

#6

'BEST QUALITY OF LIFE'
CITY IN THE WORLD
ACCORDING TO
DEUTSCHE BANK

FURTHER INFO

GO TO [VISITCOPENHAGEN.COM](https://www.visitcopenhagen.com) FOR MORE INFO ON THE MANY THINGS COPENHAGEN HAS TO
OFFER YOU DOING YOUR SUMMER IN COPENHAGEN

APPLYING FOR ISUP

18 FEBRUARY - 16 MARCH

APPLICATION ROUND FOR INTERNATIONAL AND OPEN UNIVERSITY STUDENTS

FEES*

NON-EUROPEAN FREEMOVERS:
DKK 10,500 PER BACHELOR COURSE
DKK 14,250 PER GRADUATE COURSE

OPEN UNIVERSITY STUDENTS:
DKK 4,125 PER COURSE

* SOME STUDENT CATEGORIES SUCH AS EXCHANGE STUDENTS ETC. ARE EXEMPT FROM PAYING TUITION FEES - PLEASE CHECK CBS.DK/ISUP WHETHER OR NOT YOU CAN BE EXEMPT FROM PAYING TUITION FEES

HOW TO APPLY

STUDENTS MUST APPLY THROUGH THE ONLINE APPLICATION SYSTEM

LINK TO THE ONLINE APPLICATION SYSTEM CAN BE FOUND ON CBS.DK/ISUP UNDER 'APPLICATION AND FEES'

ENGLISH PROFICIENCY

ALL STUDENTS ARE RECOMMENDED TO HAVE AN ENGLISH PROFICIENCY CORRESPONDING TO:

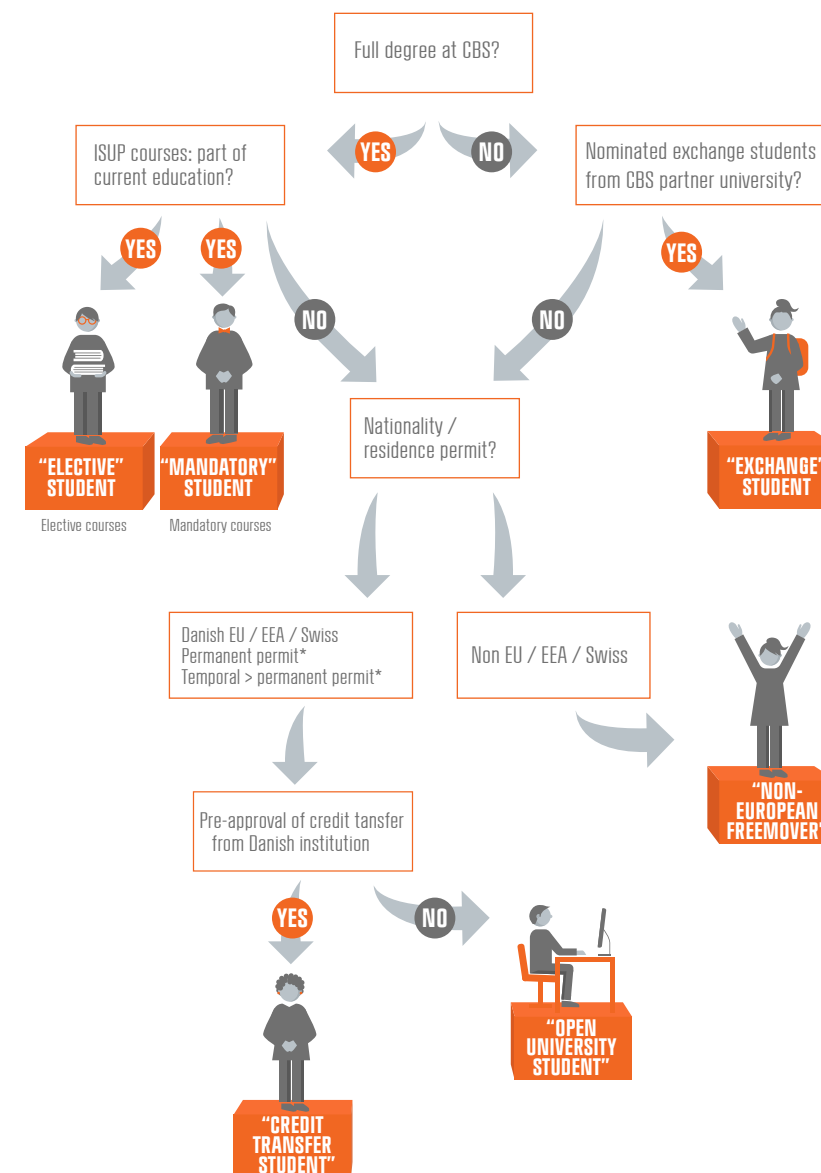
- IELTS RESULT OF AT LEAST 7.0
- TOEFL IBT RESULT OF AT LEAST 94
- TOEFL PAPER-BASED RESULT OF AT LEAST 577

FURTHER INFO

GO TO CBS.DK/ISUP FOR UP-TO-DATE INFO ON HOW TO APPLY, FEES FOR APPLYING AND COURSE OFFERS

FOR MORE INFO SEND AN EMAIL TO ISUP@CBS.DK

ISUP student categories



*PLEASE CHECK CBS.DK/ISUP FOR DETAILED DESCRIPTIONS OF ACCEPTED RESIDENCE PERMITS



Copenhagen Business School
The International Office
Porcelænshaven 18A
2000 Frederiksberg

Phone: +45 3815 3006 (Reception)
Email: isup@cbs.dk
Web: cbs.dk/isup

Phone hours:
Tuesday and Thursday
From 9:30 - 12 and 13 - 15

Photo credits:
Copenhagen Media Center, Kathrine Kollegiet
Photographers: Bjarke MacCarthy, Edita Arlauskaitė, Jakob Boserup