

A Legend Is Born: The Birth of Athena and the Cerebellum

by Antonio Chisbert and Constanza Lasagna

Introduction

- The cerebellum is a posterior structure of the brain responsible for the coordination of movement and the maintenance of balance.
- Many anatomical and histological terms related to this structure contain suffixes meaning “small”, such as cerebellum, which literally means “small brain”.
- To illustrate these concepts, we use the mythological analogy of the birth of Athena from Zeus’s skull.

This project originates from the innovative education project of *Histología y Etimología* (UV-SFPIE_PIEC- 3898908), *Scientific image and language: from the histological and etymological corpus to the use of English as a lingua franca*.

Aim

- Create a poster that reflects an analogy to explain the anatomical and histological characteristics of the cerebellum.
- Develop knowledge about the etimological origin of the different structures making up this organ.

Methodology

The project was developed using the following sources:

- Dicciomed
- Merriam-Webster dictionary
- HistoMed, UV’s Histology department’s image.

Results

duramadre: ‘dura’ lat. ‘hard’ +
‘matre’ lat. ‘mother’.

The hardest membrane
protects the encephalon like
Metis protected her daughter
inside of Zeus’ skull.

cerebellum: ‘cereb(rum)’ lat.
‘brain’ + -ell-u-a(m) lat. ‘small’.

A smaller brain emerges
from Zeus’ brain.

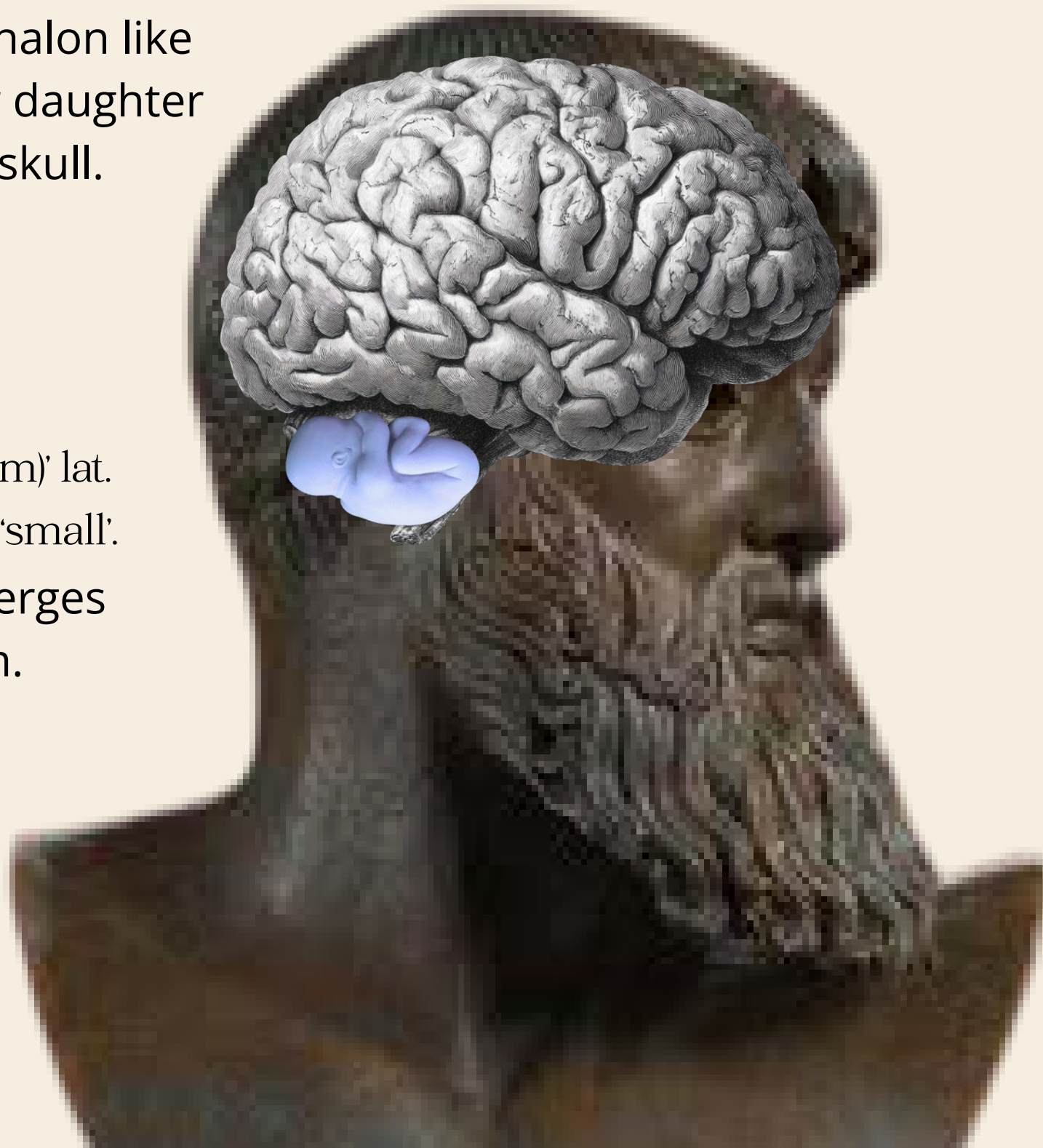


Figure 1. Analogy between the mythological birth of Athena from Zeus’s skull and the cerebellum emerging from the brain.

neuron: ‘neur(o)’ lat.
‘nerve’ + ‘n’ gr.

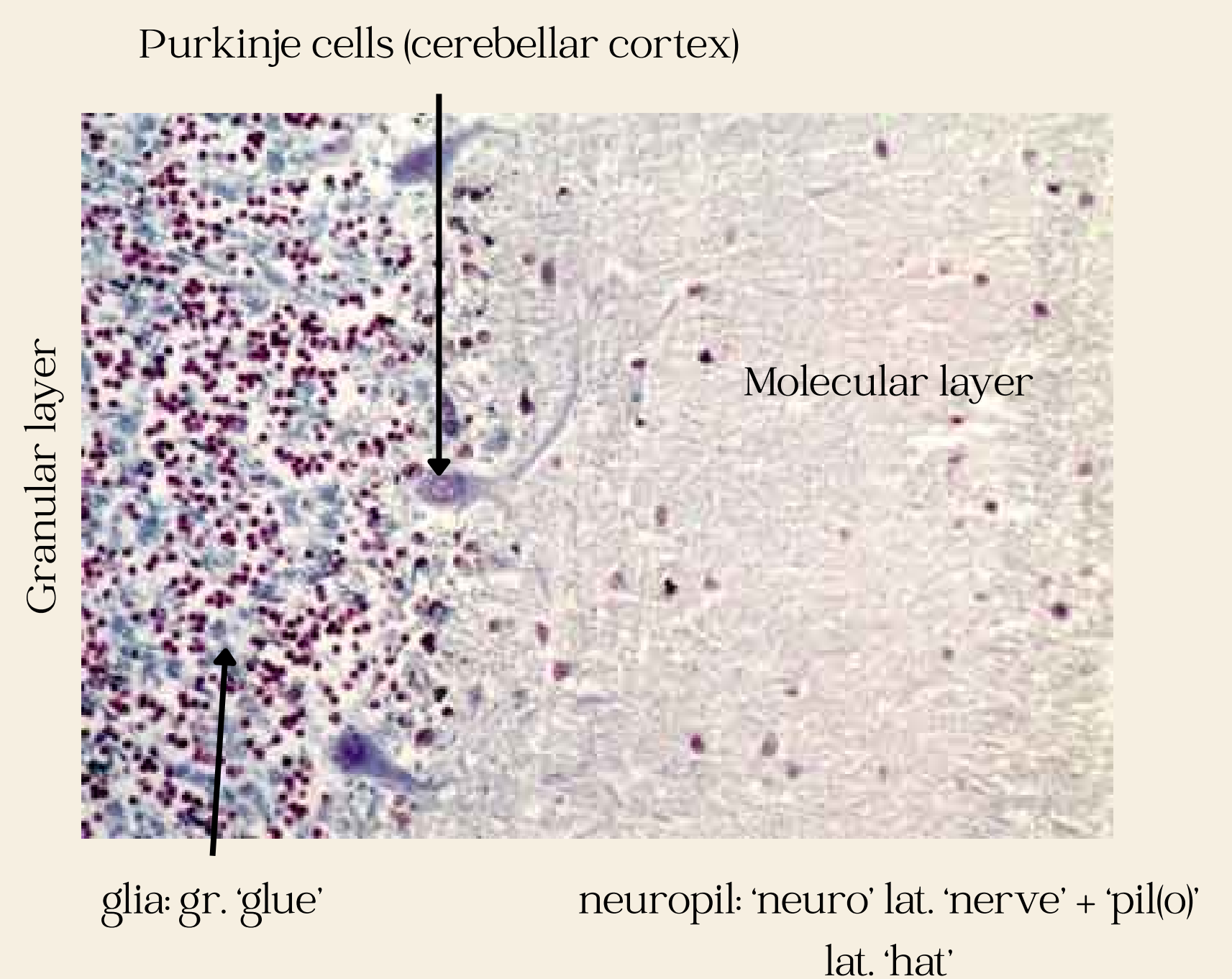


Figure 2. Figure 2. Histological structure of the cerebellum showing the main neurons responsible for integrating signals and coordinating movement. Image source: University of Valencia’s Histology department.

Conclusions

- The cerebellum plays a key role in coordination, balance and motor control, and its complex structure can be better understood through histological analysis.
- Combining mythology, histology and linguistic analysis can improve learning and make complex anatomical concepts easier to understand.