

LÁMINAS DIAGNÓSTICAS

Biología Celular y Tisular

HISTOLOGÍA

GRADO PODOLOGÍA CURSO 23-24

Departamento de Patología

Unidad de Histología

Contenido práctico (presentación 12 diciembre; evaluación examen práctico)

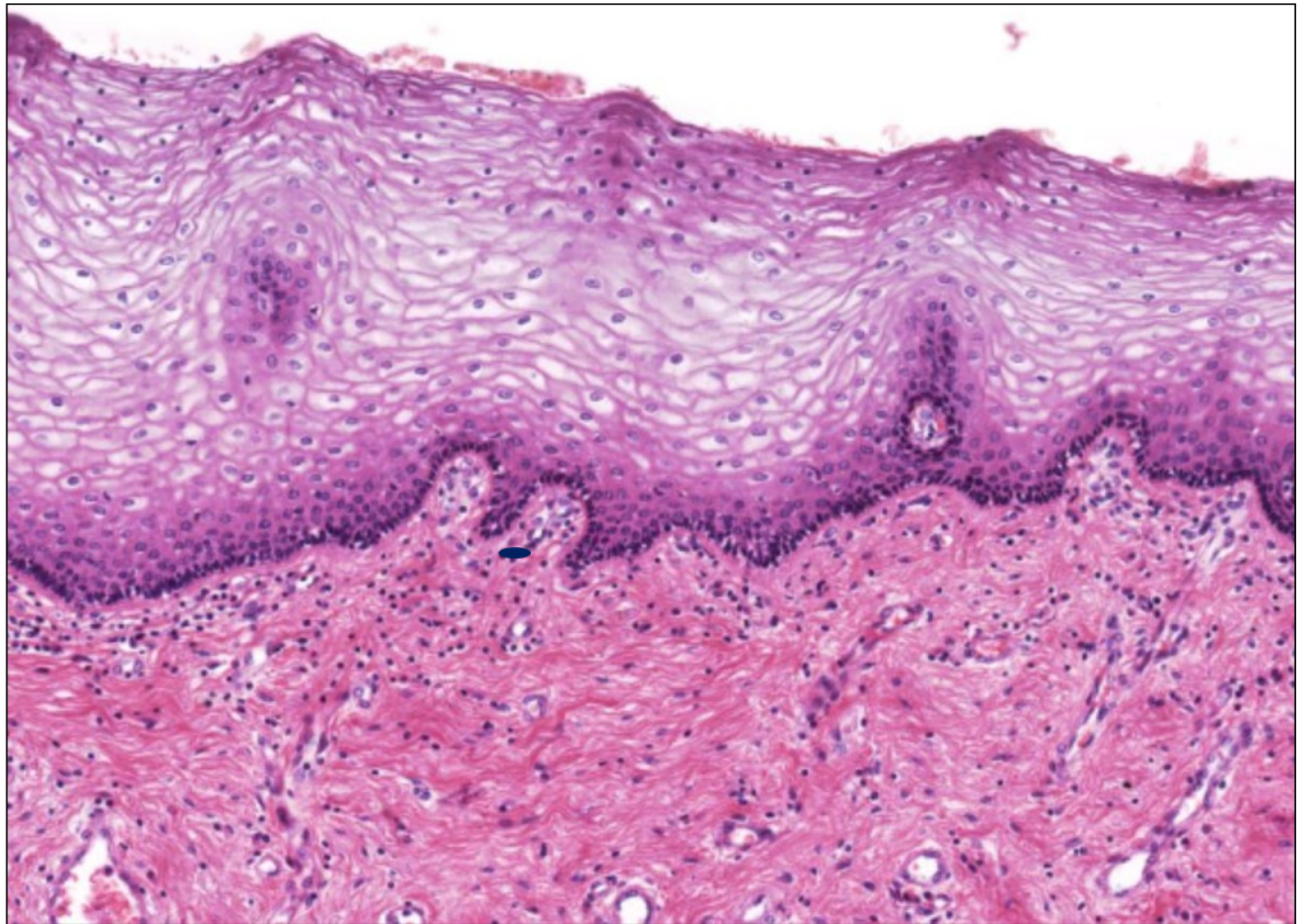
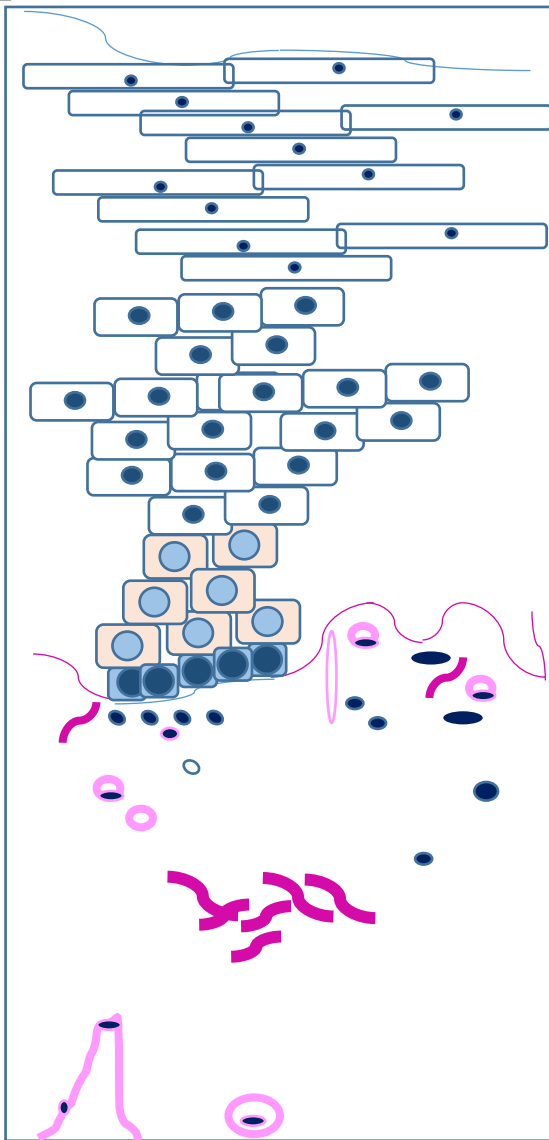


Lámina 1

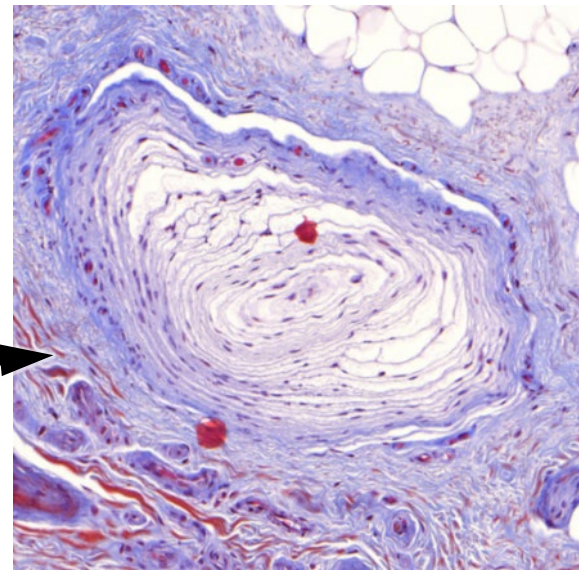
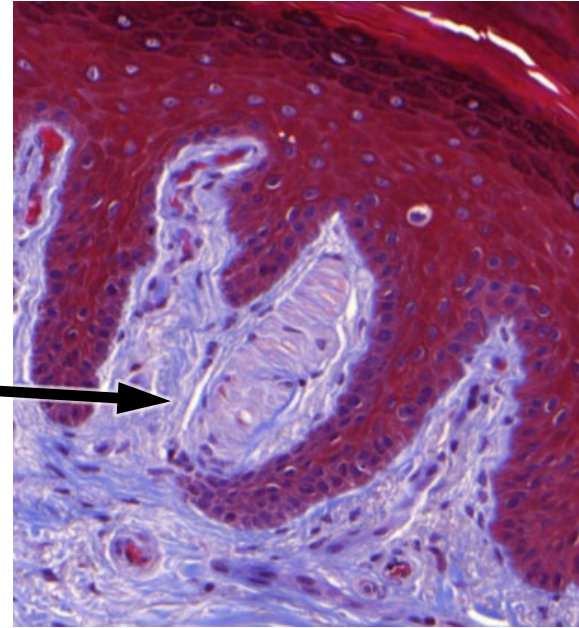
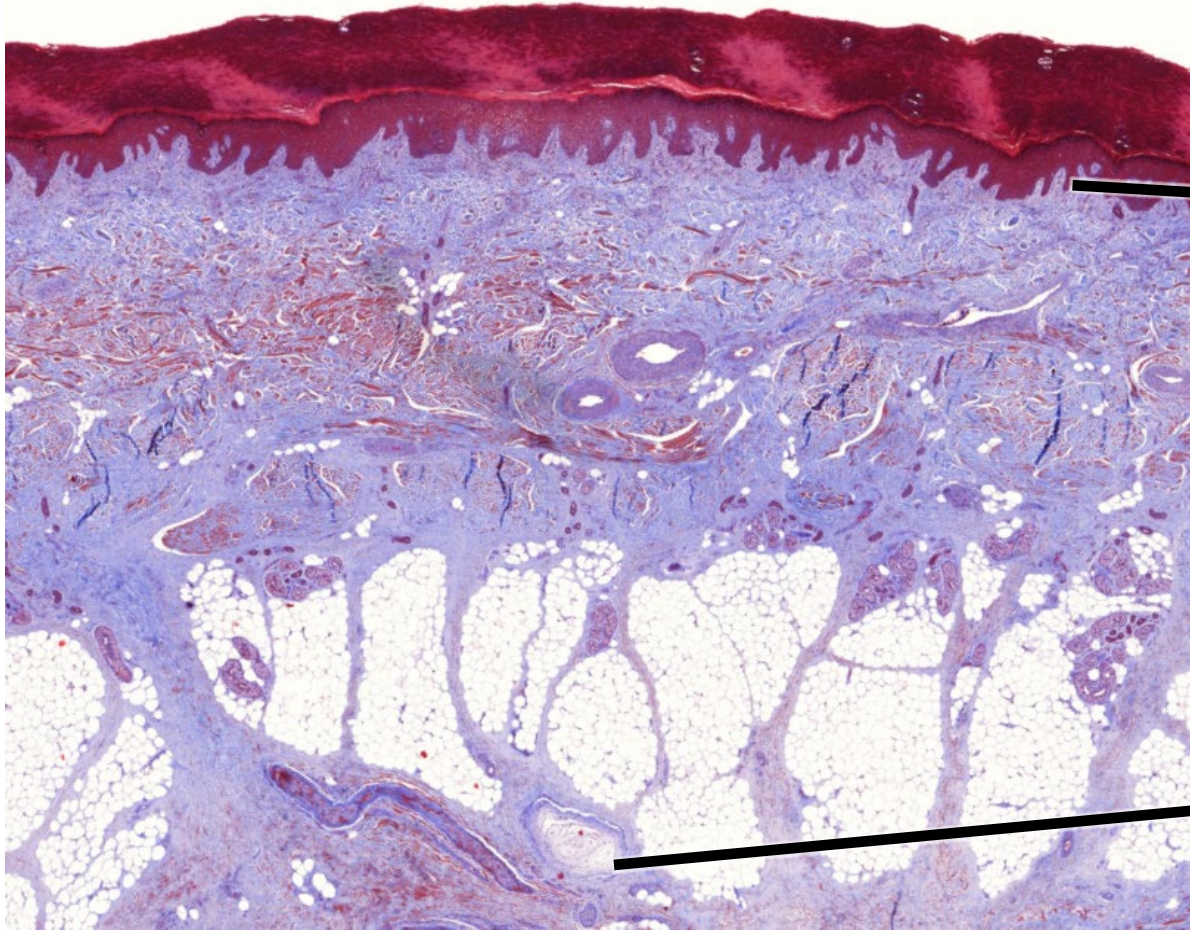


Lámina 2

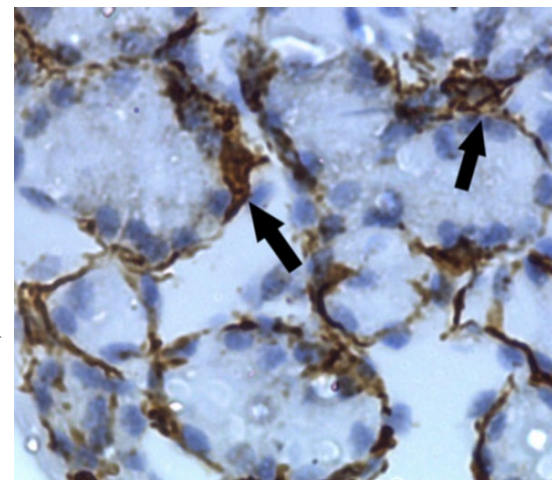
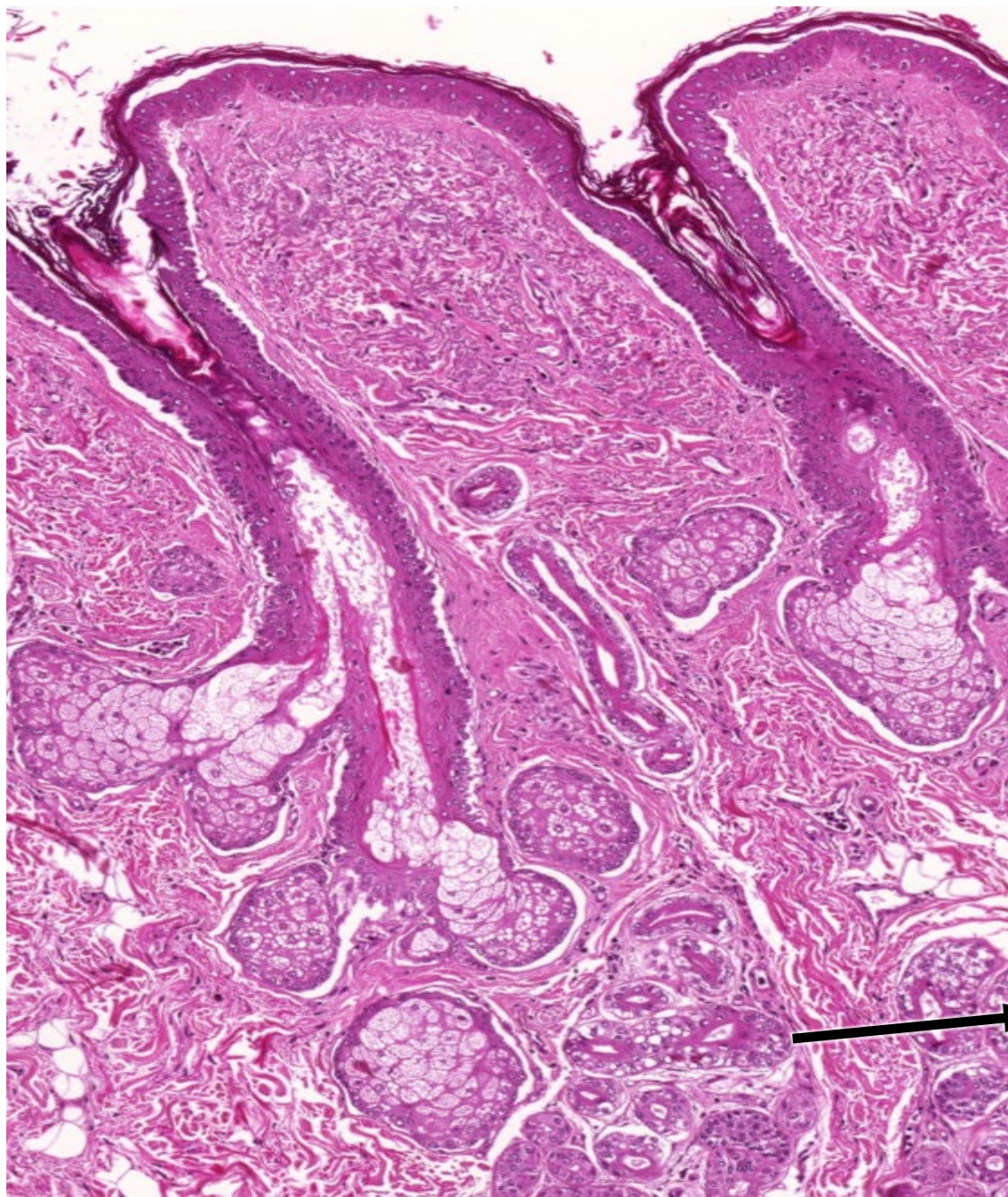


Lámina 3

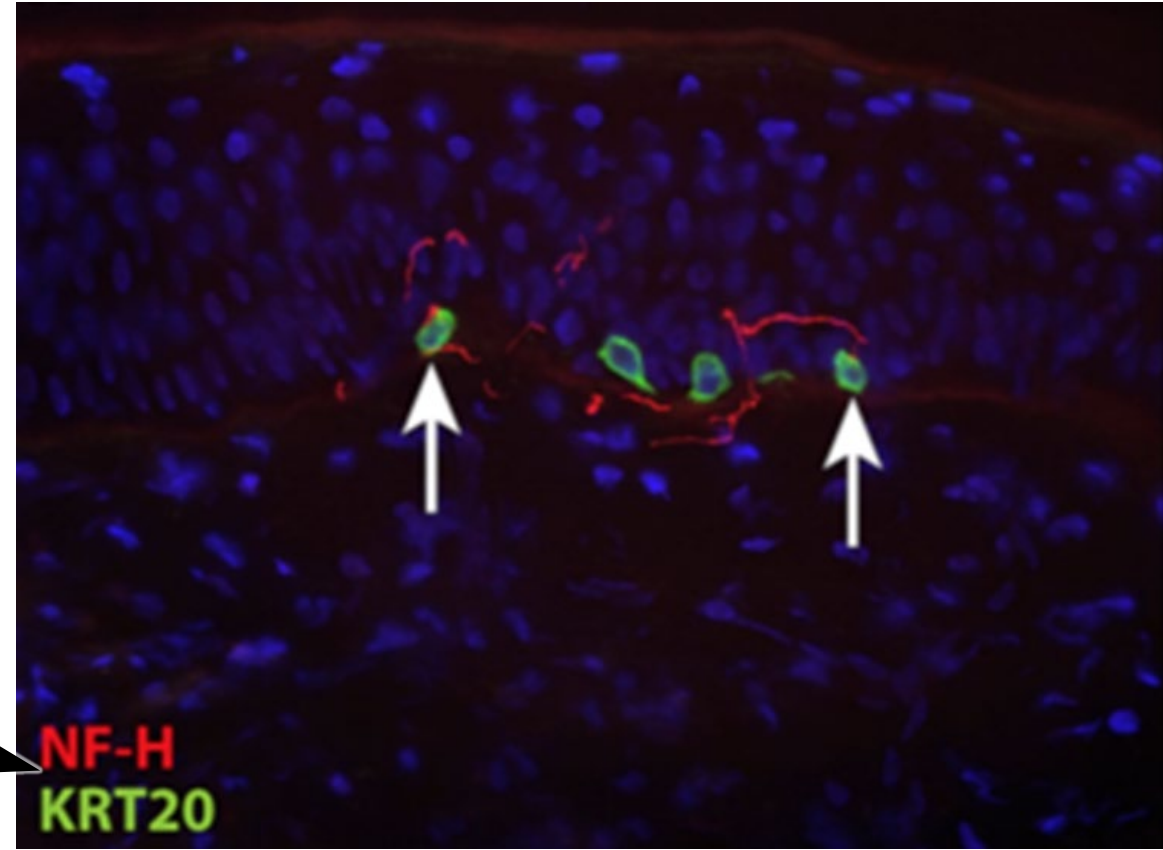
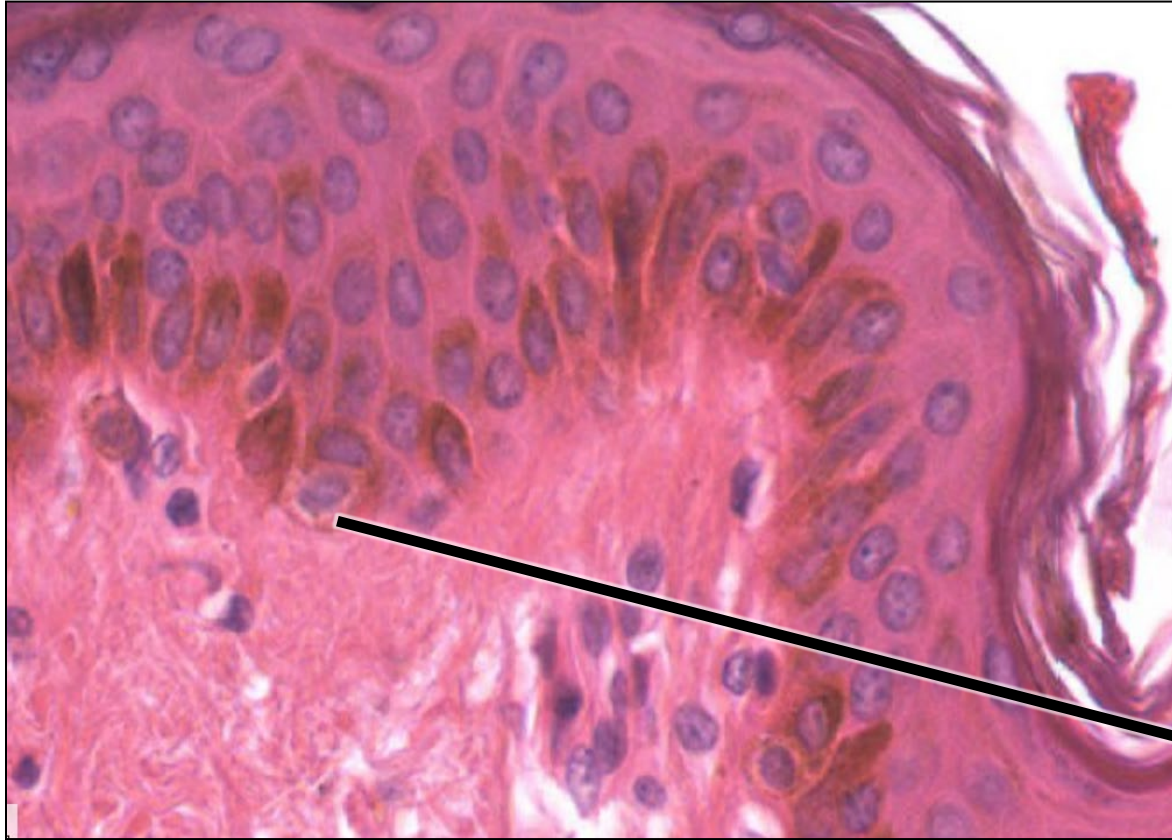
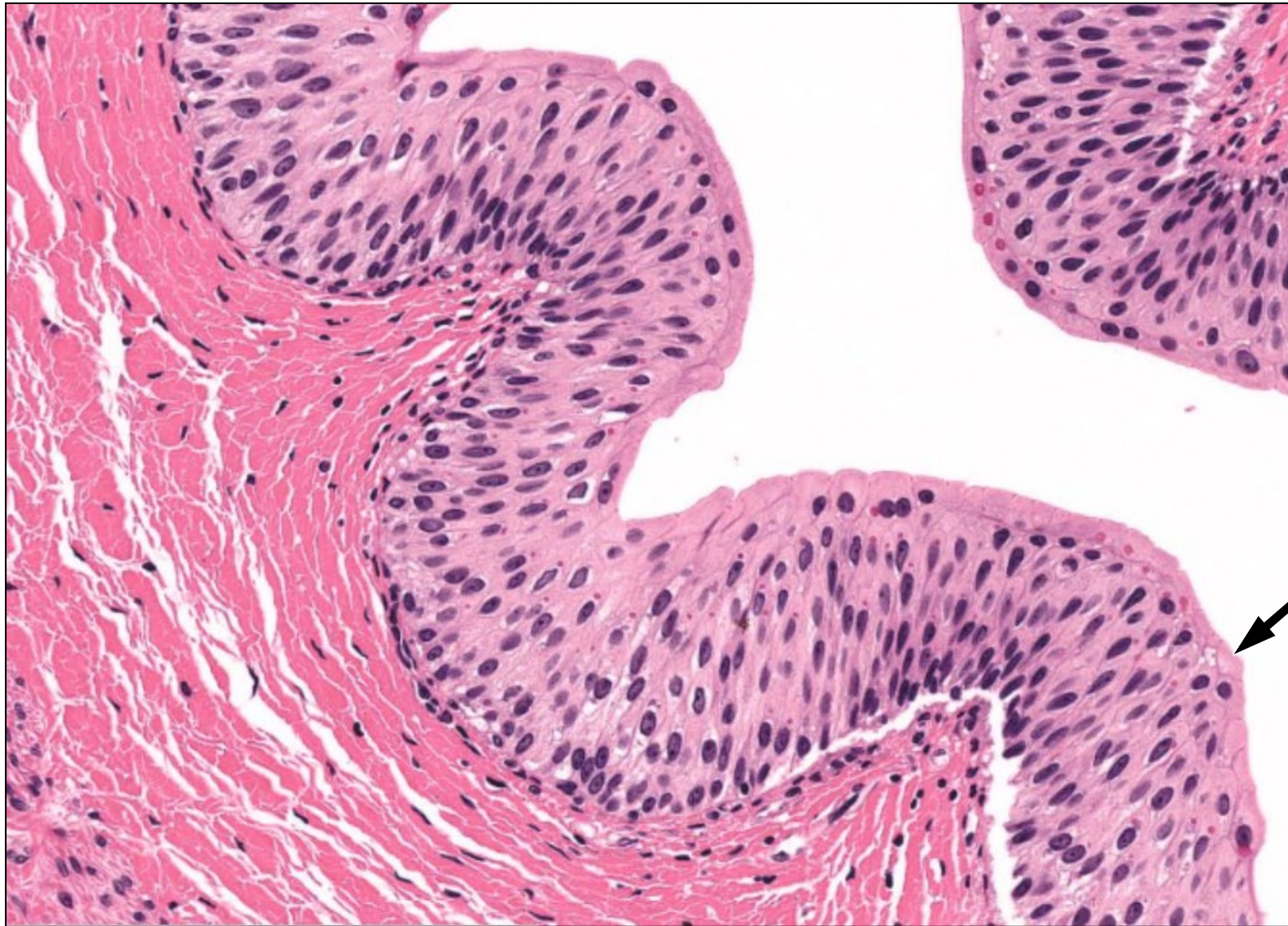


Lámina 4



Alexander Dogiel



Información personal

Nacimiento 15 de enero de 1852jul. o 1852
Panevėžys (Lituania) ✓

Fallecimiento 19 de noviembre de 1922 o 1922 ✓
San Petersburgo (Rusia Soviética) ✓

Lámina 5

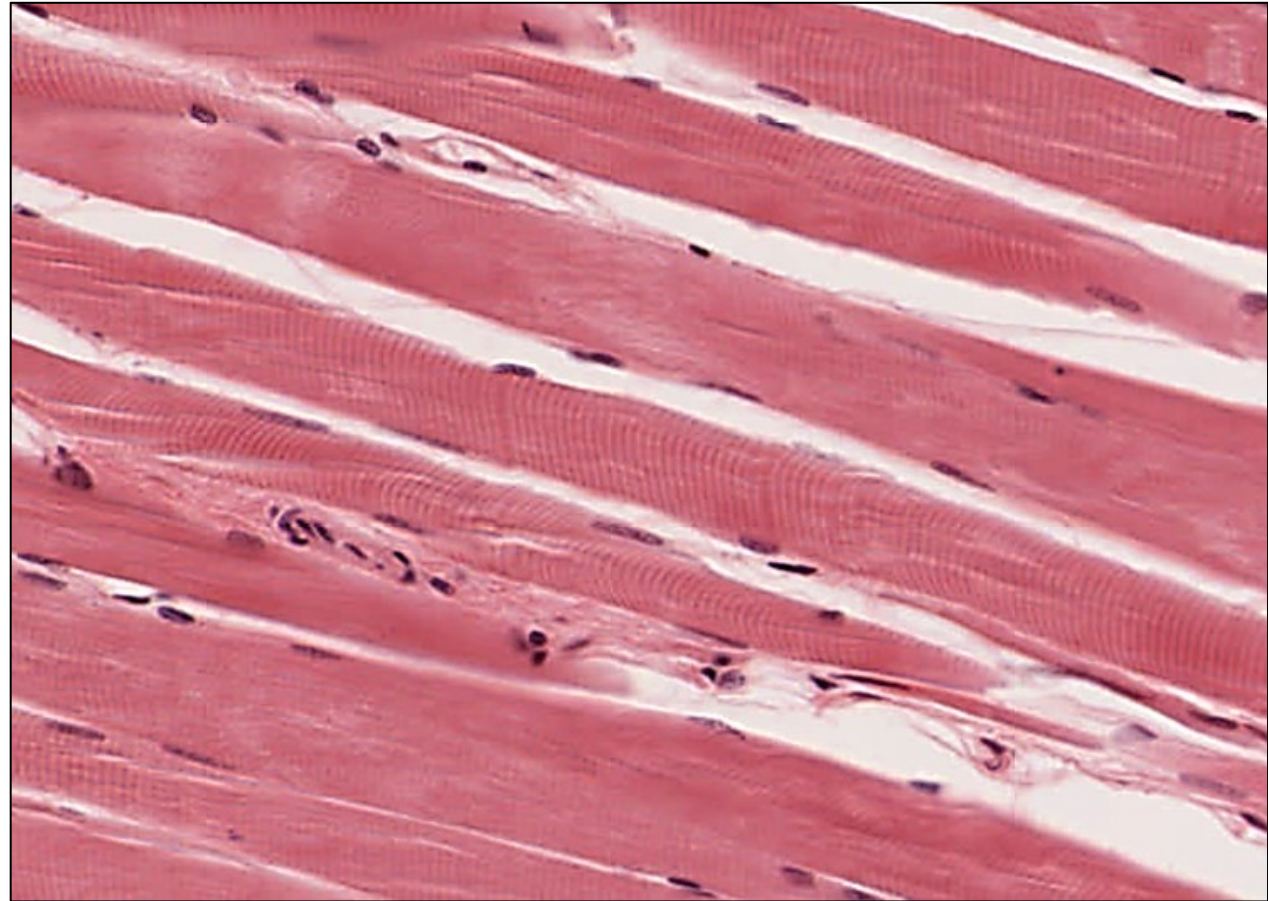


Lámina 6

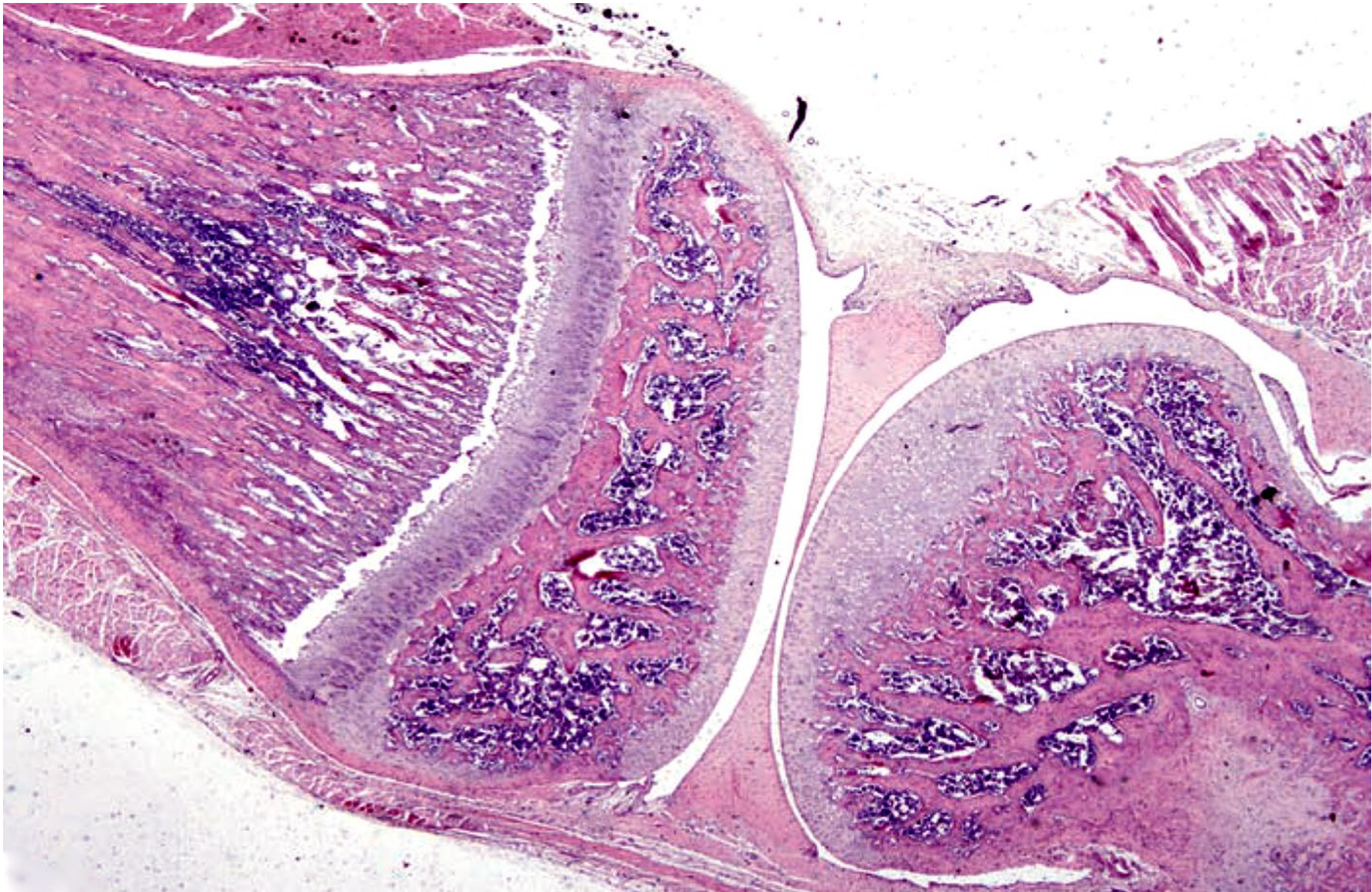


Lámina 7

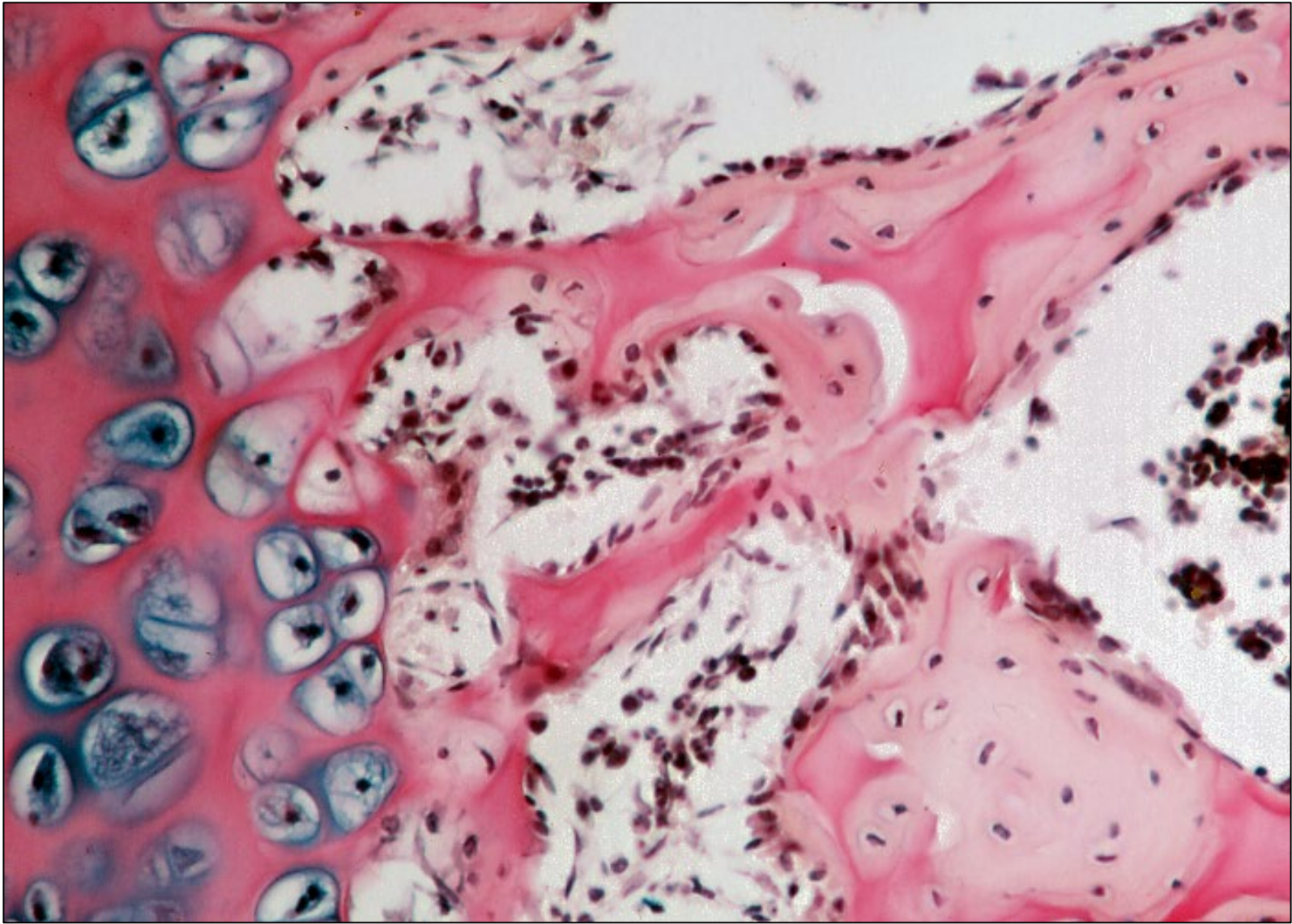


Lámina 8

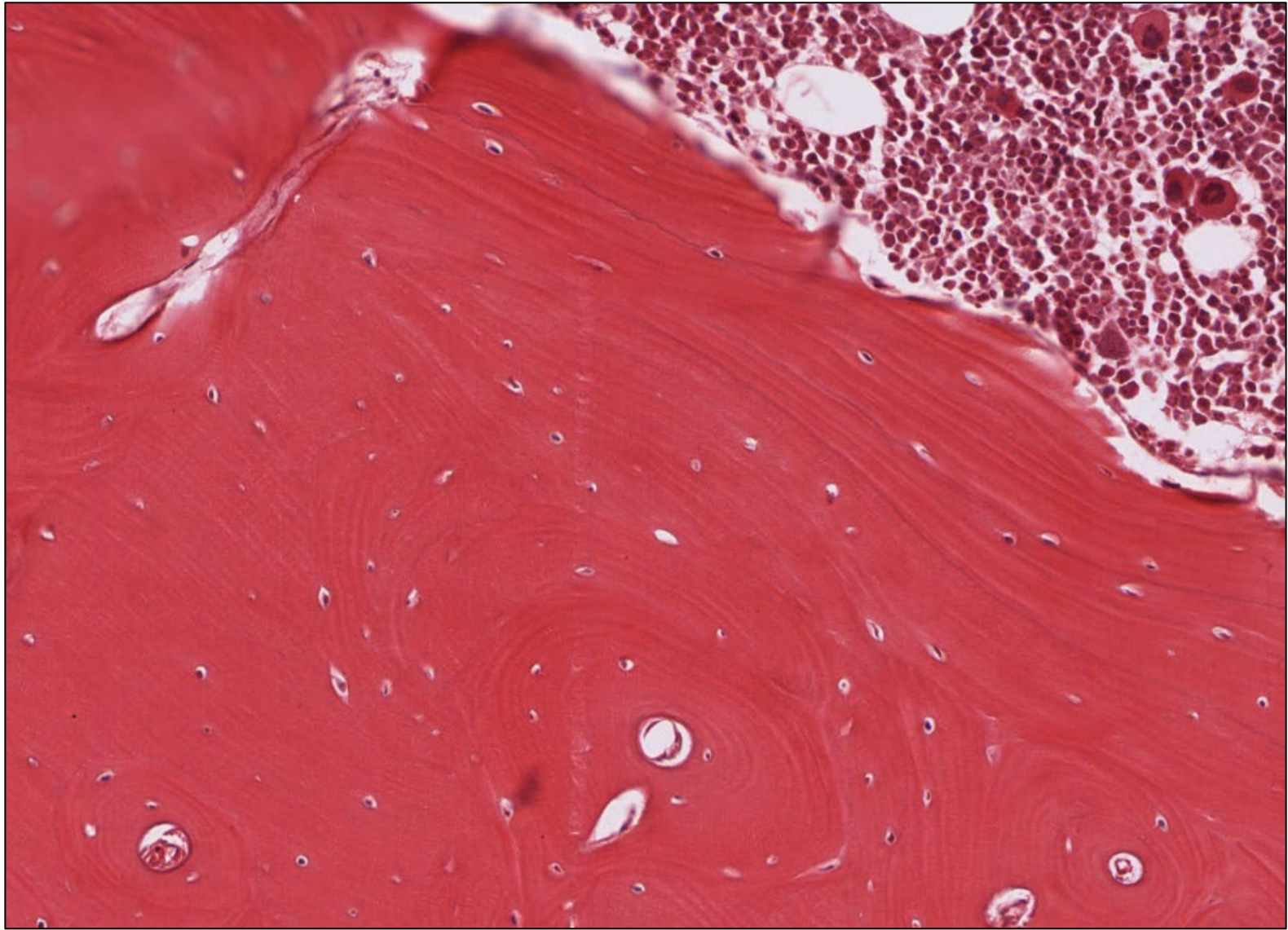


Lámina 9

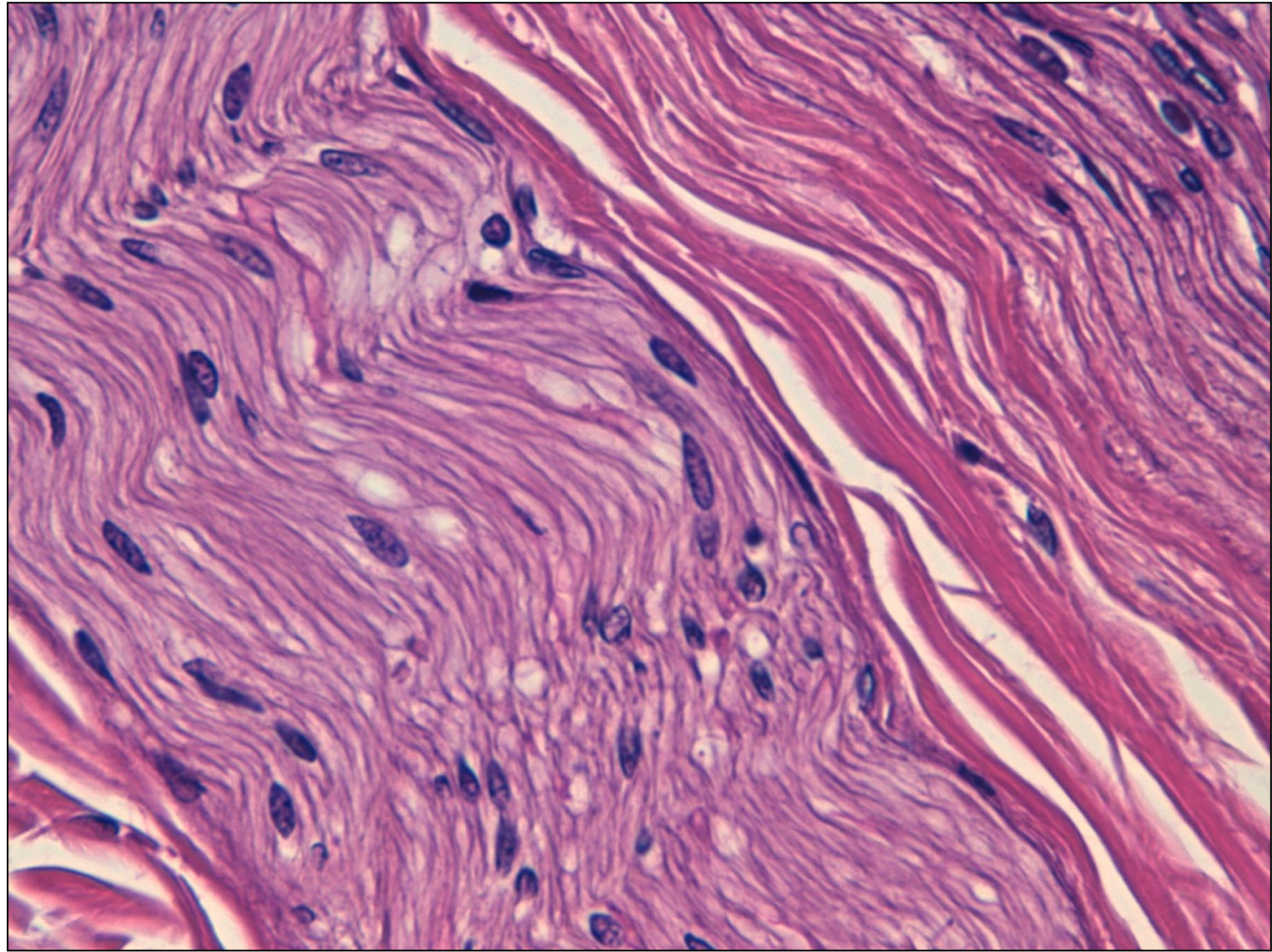


Lámina 10