



Gaumard[®]
Simulators for Health Care Education

NOELLE[®] S2200 VICTORIA[™]

User Guide

Noelle[®] S2200 is an interactive educational system developed to assist a certified instructor. It is not a substitute for a comprehensive understanding of the subject matter and not intended for clinical decision making.

User Guide 20.06.1
©2020 Gaumard Scientific
All Rights Reserved
www.gaumard.com

Contents

End User License Agreement	x
1. Introduction	1
1.1 Specifications	1
Victoria™	1
Birthing Baby	1
1.2 Care and Maintenance	2
General	2
IV Arm	2
Operating Conditions	3
Storage Conditions	3
Procedures	3
Cleaning	3
Birth Canal Maintenance	3
ECG and Electrical Therapy Checklist and Warnings	4
Epidural	5
Abdominal Covers	6
Postpartum Hemorrhage System	6
2. Overview	7
2.1 Features	7
2.2 Victoria™	7
Obstetrics	7
Dynamic Perinatal Monitor	9
Maternal Airway	9
Maternal Breathing	10
Maternal Cardiac	10
Maternal Circulation	10
Maternal Neural Responses	11
Maternal Speech	11
Wireless Streaming Audio	11
Maternal Articulation and Movement	11
2.3 Birthing Baby	12
Birthing Baby Features	12

2.4 Other	12
Vital Signs Monitor	12
User Interface	13
3. Victoria Setup	14
3.1 Initial Setup	14
Simulator Placement	14
Leg Assembly	15
Installing Birth Canal and Cervix	16
Power Supply	19
3.2 Birthing Baby Setup	20
Power Supply	20
3.3 Control Tablet PC	21
Using the Stylus	21
Calibrating The Stylus	21
Wireless Communication USB Module	22
USB Communication Module Wired	22
Streaming Audio Headset	23
3.4 Virtual Monitor	24
Virtual Monitor PC Setup	24
Virtual Monitor Wireless Connectivity	24
Gaumard Monitors	25
4. Working with Victoria	26
4.1 Airway	26
Nasal And Oral Intubation	26
Airway Complication	27
Intubation Sensor	27
Airway Sounds	27
Teeth	27
4.2 Breathing	28
Respiratory Patterns	28
Pulmonary Ventilation	28
Chest Rise	29
Chest Compressions	29
Real CO2 Exhalation (Optional)	31
4.3 Cardiac	35
Heart Sounds	35
ECG Monitoring and Electrical Therapy	35

4.4 Cephalic	39
Tracking Eyes	39
Eye Movements	41
Strabismus	41
Blinking	41
Blepharospasm	42
Ptosis	42
Pupil Dilation	43
Joystick Control and Nystagmus	43
Automatic Calibration	45
Seizures	45
4.5 Circulation	46
Bilateral Pulses	46
Manual Blood Pressure	46
Non-Invasive Blood Pressure	47
Drug Recognition	49
IV Arm	56
Oxygen Saturation	57
4.6 Systemic	59
Intramuscular Injection Sites	59
Urinary Catheterization	59
Bowel Sounds	60
4.7 Birthing Baby	61
Overview	61
Range of Motion	61
Auscultation	62
Crying	62
Cyanosis	62
4.8 Obstetrics	63
Pelvis with Anatomic Landmarks	63
Articulation and Movement	63
Epidural Insert	64
Abdominal Covers	66
Realistic Birth Canal with Dilating Cervix	68
4.9 Labor and Delivery	69
Normal Labor and Delivery	69
Placenta Delivery	79
Vacuum-Assisted Delivery	80
Shoulder Dystocia	81
Prolapse of the Umbilical Cord	83

Placenta Previa	83
Breech Delivery	84
Cesarean Delivery	85
4.10 Postpartum Activity	89
Postpartum Hemorrhage	89
Episiotomy Repair	95
Rectal Suppository	96
4.11 Other	97
Vital Signs Monitor	97
Streaming Audio	97
5. Working with UNI™	98
5.1 Getting Started	98
Initiating the Simulator	98
5.2 UNI™ Interface	99
Connection Status	99
Victoria and Birthing Baby Battery Indicators	100
Session Clock	100
Power/Stand-by Button	100
Quick Launch	101
Systems List View	103
Changing Vital Signs	104
Applying Changes	105
Birthing Baby	106
Creating Palette Items	107
Body View	109
Labor 3D View	110
Sensor Panel	111
Myocardial Infarction Editor and EKG Designer	111
5.3 Labor	112
Labor Scenarios	114
Labor Duration	114
Initial Position Synchronization	115
Internal and External Rotations	115
Disable Rotation	116
Remote Positioning Controls	116
Editing Rotations	116
Labor Graph	118

Descent Station	118
Descent Curve	119
Palette Time Line	120
Labor Controls	121
Progression Line	122
5.4 Locking Mechanism and Release	122
5.5 Additional Labor Features	123
Shoulder Dystocia	123
Check ROT/LOT Delivery	124
Contraction Descent	124
Contraction Response	125
Smart Labor	125
Fetal Monitor	126
Save Labor	127
6. Appendix	128
6.1 Troubleshooting	128

Communication/Power Issues	148
Miscellaneous Issues	151
Streaming Audio Issues	156
Virtual Monitor Connection Issues	158
Recording and Debriefing Issues	159
Victoria Specific Issues	161
7.2 Victoria Specifics	164
Calibration Menu	164
Factory Settings	164
Silicone Repair Kit	166
Replacing IV Veins	167
Wireless Network	172
7.3 Consumables	177
8. Warranty	178
8.1 Exclusive One-Year Limited Warranty	178
8.2 Extended Warranty	178
9. Contact Gaumard	179
9.1 Contacting Technical Support	179
9.2 General Information	179

End User License Agreement

This is a legal agreement between you, the end user, and Gaumard® scientific company, inc. ("Gaumard"). This software is protected by copyright laws and remains the sole property of Gaumard. By installing the UNI™ (the "software") media, you agree to be bound by the terms of this agreement. If you do not agree to the terms of this agreement, promptly return the uninstalled media and accompanying items to Gaumard at the address indicated below.

1. Grant of License: Gaumard hereby grants to you (an individual or institution) the right to install and activate the software on one computer for use with one interactive patient simulator system. The software may also be installed on any number of other computers at the same institution so that students may access the learning resources. One copy of the software may be made for backup purposes. You may not network this software, or allow multiple users unless you purchased a multi-user workstation license. Sharing this software with other individuals or allowing other individuals to view the contents of this software is in violation of this license.

2. Copyright: The software is owned by Gaumard and protected by United States copyright laws and international treaty provisions. Therefore, you must treat this software like any other copyrighted material. You may not make this software or copies thereof available in any manner or form or use, copy or transfer the software, in whole or in part, except as provided herein.

3. Other Restrictions: You may not rent or lease this software to any other party. You may not alter, merge, modify, adapt, reverse engineer, decompile or disassemble the software, or disclose the contents of this software to any other party.

4. Electronic Transmission of Software: If you received the software by electronic transmission or by internet delivery, by installation of the software, you acknowledge that you have read and understand this license agreement and agree to be bound by its terms and conditions.

5. Term of Agreement: The term of this agreement and the license granted to you pursuant hereto shall commence upon installation of this software. This agreement and the license granted herein may otherwise be terminated by Gaumard in the event that you are in breach of any provision of this agreement. In the event of termination, you agree to immediately return this software, accompanying items, and any copies thereof to Gaumard.

6. Limited Warranty:

(A) The cd-rom media (the "media") which contains this software is warranted, for a period of 30 days from the date of purchase, to be free from defects in material and workmanship. Electronic transmission is warranted to be free from defects at the moment of transmission. Your sole and exclusive remedy, and Gaumard's sole liability, is to replace the defective media or to repeat the electronic transmission provided that you notify Gaumard in writing of such defect or defective transmission and return the defective media, if any, during the 30-day warranty period.

(B) Except and to the extent expressly provided in paragraph (a), the software and accompanying written materials are provided on an "as is" basis, without any warranties of any kind, including, but not limited to, any implied warranties of merchantability or fitness for any particular purpose. No oral or written information or advice given by Gaumard, its dealers, distributors, agents or employees shall create a warranty or in any way increase the scope of this warranty, and you may not rely on any such information or advice. Gaumard does not warrant, guarantee, or make any representations regarding the use or the results of use, of the software or written materials in terms of correctness, accuracy, reliability, currentness, or otherwise, and the entire risk as to the results and performance of the software is assumed by you. If the software or written materials are defective, you and not Gaumard or its dealers, distributors, agents, or employees, assume the entire cost of all necessary servicing, repair or correction other than expressly described above.

(C) Neither Gaumard nor anyone else who has been involved in the creation, production or delivery of this product shall be liable for any direct, indirect, consequential or incidental damages (including damages for loss of business profits, business interruption, loss of business information, and the like) arising out of the use or inability to use such product or related to this agreement even if Gaumard has been advised of the possibility of such damages. Gaumard shall not be liable to you for any indirect, special, incidental, or consequential damages or lost profits arising out of or related to this agreement or your use of the software and/or the related documentation, even if Gaumard has been advised of the possibility of such damages. In no event shall Gaumard's liability here under, if any, exceed the purchase price paid by you for the software.

All rights not expressly granted in this license agreement are reserved by Gaumard.

ACKNOWLEDGMENT

By installation of this software, you acknowledge that you have read and understand the foregoing and that you agree to be bound by its terms and conditions. You also agree that this agreement is the complete and exclusive statement of agreement between the parties and supersedes all proposed or prior agreements, oral or written, and any other communications between the parties relating to the license described herein.

1. Introduction

1.1 Specifications

Victoria™

- Weight:
 - › Victoria: 89 lbs (40.4 kg) *without abdominal cover*
 - › Contraction abdominal cover: 11 lbs (5 kg)
 - › Cesarean abdominal cover: 9 lbs (4.1 kg)
 - › Postpartum abdominal cover: 14 lbs (6.3 kg)
 - › Palpation abdominal cover: 25 lbs (11.3 kg)
- Length: 5'8" inches (172 cm)
- Fluid Reservoir Capacity:
 - › Postpartum hemorrhage reservoir: 1000 ml
 - › Cephalic delivery bleeding/amniotic fluid reservoir: 200 ml
 - › Lubrication reservoir: 10 ml
 - › Urine reservoir: 200 ml
 - › Drain fluid reservoir: 30 ml
- Wired connectivity: Gaumard USB Communication Module (RJ45)
- Wireless connectivity: Gaumard USB Com. Module RF IEEE 802.15.4
- Battery Charger:
 - › Power input: 100-240 VAC, 50/60 Hz, 500 ma/ 50 VA
 - › Power output: 12 VDC/ 2 A/ 24VA

Birthing Baby

- Weight: 6 lbs (2.7 kg)
- Length: 19.5 inches (49.5 cm)
- Battery charger:
 - › Power input : 100-240 VAC, 50/60 Hz, 0.6A/ 38 VA
 - › Power output: 9V, 2A

1.2 Care and Maintenance

WARNING: Damage caused by misuse is not covered by your warranty. It is critical to understand and comply with the following guidelines.

WARNING: The lubricants and other accessories provided are for use with the accompanying patient simulator only. The lubricants and other accessories are not suitable for human use or medical treatment/diagnosis and should never be used for such purposes.

General

- Avoid contact of rings and sharp objects to the simulator's skin.
- Ball point pens, ink, and markers permanently stain the skin.
- Do not wrap this or any other Gaumard product in newsprint.
- Marks made with ballpoint pens, ink or marker cannot be removed.
- Never disconnect the communications module while the UNI™ software is running. The software will halt, and the module may be damaged.
- Never drag or slide the simulator during transportation, damage to the skin may occur.

Victoria shipping support item is provided to support the simulator during shipping and transportation. Do not discard this item.

IV Arm

- Vein tubing material is latex free.
- Only use Gaumard's provided simulated blood. Any other simulated blood containing sugar or any additive may cause blockage and/or interruption of the vasculature system.
- The use of needles larger than 22 gauge will reduce the lifetime of the lower arms' skin and veins.
- Always purge with clean water and then drain the vein reservoirs at the end of the simulation session. Doing so will retard the formation of mold and prevent clogging of the system.
- We recommend flushing veins with 70:30 solution of clean water to isopropyl alcohol (IPA) after every simulation to prolong the life of the vasculature.
- When the arm skin and/or veins require replacement, refer to the "Consumables" section of this guide. For more information regarding the replacement of veins and other consumable items please contact customer service.

Operating Conditions

- Operating the simulator outside these ranges may affect performance:
 - › Temperature: 50°-95° F (10°-35° C)
 - › Humidity: 5%-95% (non-condensing)

Storage Conditions

- Storage temperature: 32°-113° F (0°-45° C)
- Humidity: 40%-60% (non-condensing)
- Do not stack or store heavy materials on top of the simulator boxes
- Keep Victoria with her legs elevated in stirrups or with a pillow under her thighs

Procedures

- Do not attempt to intubate without lubricating the airway adjunct with **mineral oil** lubricant. **Do not use silicone oil as lubricant.** Failure to lubricate the device will make intubation very difficult and is likely to result in damage to the simulator.
- Mouth to mouth resuscitation without a barrier device is not recommended, as it will contaminate the airway.
- Treat the simulator with the same precautions that would be used with a **real** patient.

Cleaning

- The simulator should be cleaned with a cloth dampened with water and gentle, diluted soap then dried thoroughly.
- Remove all traces of any lubricant.
- Do not clean with harsh abrasives. Do not use povidone iodine.
- The simulator is “splash-proof” but not water-proof. Do not submerge or allow water to enter the interior of the simulator.

Birth Canal Maintenance

- Do not palpate using fingernails as this may tear the skin.
- Ball point pens, ink and markers permanently stain the birth canal insert.
- Do not wrap this or any other Gaumard product in newsprint.
- The birth canal insert can be cleaned with water and diluted soap.
- Do not clean with isopropyl alcohol
- Store the spare birth canal in a cool, dry location.
- Always lubricate the birth canal with mineral oil lubricant prior to delivery.

Electrical Therapy

- There are inherent dangers in the use of some medical devices. For simulations that incorporate electrical therapy of any kind, always know your equipment, and follow the device manufacturers' safety guidelines.
- Defibrillation is only allowed on the sternum and apex snap sites, as indicated in figures 1 and 2
- NEVER deliver a shock to ECG snap connectors, marked green in figure 3. Doing so will not create a fire hazard, nor is there risk of shock to the provider, but internal damage to the simulator will result. This situation is considered improper use and is NOT covered by the Victoria warranty. The system will require repair at our facility.



Figure 1



Figure 2



Figure 3

ECG and Electrical Therapy Checklist and Warnings

- Only deliver electrical therapy when the simulator is fully assembled, dry, and undamaged.
- Make sure the defibrillation snaps on the simulator are in good condition.

WARNING: Do not use hard paddles or gel pads to defibrillate the simulator. Defibrillation is only allowed using the “Defibrillation Snap Cable.”

- Make sure the simulator is not in contact with any electrically conductive surfaces.
- Use the simulator only in a well-ventilated area that is free of all flammable gases.

- NEVER attempt to service or modify any of the electrical connections, especially those between snap connectors and the internal electronics.
- Discontinue use of any wires if they are found exposed with damaged insulation.
- Do not connect the defibrillation snap cable to the ECG snap connectors. Doing so will cause internal damage on the simulator.
- DO NOT SCRATCH the conductive snaps with abrasive objects; doing so will cause irreversible damage to the conductive sites.

Epidural

- To avoid damage to the lumbar insert, be gentle when moving or relocating Victoria.
- Care should be taken against having anything resting or pressing against the lumbar insert when operating the simulator. If this occurs, “dents” or indentations will form on the insert at the pressure points. The indentation may return after the pressure is relieved.
- Have trainees wash their hands prior to use.
- Palpate using the pads of the fingers. Do not palpate using fingernails as this may tear the skin.
- Do not press the lumbar insert against soiled surfaces, ink or newsprint.
- Do not use iodine or betadine type solutions; these will most likely permanently stain the simulator.
- Do not write on the insert.
- The use of needles larger than 18 gauge will reduce the lifetime of the insert.
- Clean the insert with a cloth dampened with diluted liquid dish washing soap. If medical adhesives remain on the skin, clean with alcohol wipes.
- Place talcum powder on the insert surface to reduce tackiness. Reapply as needed.

Abdominal Covers

- Have trainees wash their hands prior to use.
- Palpate using the pads of the fingers.
- Do not palpate the abdominal covers using fingernails as this may tear the skin.
- Do not press the abdominal covers against soiled surfaces, ink or newsprint.
- Do not write on the abdominal covers.
- Do not use electro or cauterization tools on the Cesarean abdominal cover.
- The abdominal covers may be cleaned using a clean cloth with diluted dishwashing soap and water.

It is not recommended to add any fluids in the Cesarean section cover. The unit is not waterproof. Any damage caused due to leakage may not be covered under warranty.

Postpartum Hemorrhage System

- Use only simulated blood provided by Gaumard. Any other simulated blood brand containing sugar or any additive may cause blockage and/or interruption of the PPH system.
- Always clean and purge the PPH reservoirs at the end of simulation as per the recommended procedures.
- Do not store the simulator with fluid in the internal reservoirs or the PPH system.

2. Overview

2.1 Features

- Tetherless—remains fully functional even while in transit
- Removable and interchangeable abdominal covers with anatomically correct birth canal and dilating cervix
- Seamless, smooth and supple skin covers Victoria from head to toe
- Use real fetal heart monitoring devices to track fetal heart rate and duration/intensity of contractions
- Blood reservoir with programmable discharge for intrapartum bleeding
- Anatomically correct urethra for urinary catheterization
- Tetherless, interactive fetus with seamless joints, endoskeleton, and realistic full term weight and length
- Fetus rotates, dips, and rises in response to commands from a wireless tablet PC
- McRoberts maneuvers and suprapubic pressure sensors help to resolve an obstructed delivery
- Hemorrhage reservoir with a capacity of 1L and programmable flow control
- Realistic range of motion in legs to perform McRoberts maneuver
- Streaming voice and throat sounds
- Rectum suppository receptacle with automatic electronic recognition
- Powerful and intuitive UNI™ software with new 3-D animation
- Interchangeable abdominal covers with seamless attachments. The modular abdominal covers include a concealed seam between cover and torso endoskeleton. Four covers are provided
- Internal bladder with fluid reservoir for urinary catheterization exercises.
- Bowel sounds

2.2 Victoria™

Obstetrics

- Anatomic landmarks include bilateral ischial spines, coccyx, and pubic bone
- Realistic articulation allows the use of stirrups or foot paddles
- Lifelike birth canal with dilating cervix simulates human tissue
- Practice epidural procedures on a spinal cord insert with skin layer, subcutaneous layer, connective tissue, and lumbar vertebrae

- Precision programmable fetal delivery system for repeatable teaching exercises including:
 - › Normal Labor and Birth
 - › Instrumented Delivery
 - › Shoulder Dystocia
 - › Breech Presentation
 - › Cesarean Section
- Delivery system can be programmed for rapid or lengthy deliveries
- Program fetal descent over time
- Pause, continue, or accelerate labor at any time
- Fetal monitor interacts with labor scenario
- Apply maternal and fetal vital signs at specified points during the labor
- Select descent ONLY during uterine contractions
- Precise control over both fetal translation and rotation
- Start delivery at ROA, LOA, LOP or ROP
- Program internal and external fetal rotations as needed
- Program shoulder dystocia so that each student is evaluated using exactly the same scenario
- Save and share scenarios and results for later use
- Programmed with over 45 obstetric scenarios that can be modified as the instructor requires
- Ability to quickly and easily create new scenarios as the instructor requires
- Ability to change maternal, fetal, or delivery conditions during the scenario
- Measure and log forces experienced by fetus
- Force and shoulder position are graphed in real time with the uterine contraction
- Palpation abdominal cover with fetus may be used for external version
- Install fluids for bleeding and urinary catheterization
- Programmable bleeding from birth canal
- Forceps and Vacuum-Assisted Delivery
- Uterine module for PPH
- Umbilicus and placenta; attach placenta to uterine wall, placenta includes retained fragments
- PPH: the postpartum abdominal cover integrates the reproductive system with hemorrhaging capabilities to facilitate the transition between delivery and postpartum simulations
- Intrapartum Modeling and Trending
- Shoulder Dystocia
- Breech and Vertex Delivery
- Leopold Maneuver
- C-Section Abdominal inserts have simulated blood incorporated into the subcutaneous layer

- C-section: using dissectible abdominal cover including realistic skin, subcutaneous, fascia, rectus muscle, and peritoneum
- Practice C-sections using real surgical instruments
- Episiotomy repair inserts simulate human tissue that can be sutured closed repeatedly
- Prolapse of the umbilical cord
- Placenta Previa

Dynamic Perinatal Monitor

- Program Uterine Activity
- Control frequency, duration, and intensity of contractions
- Select resting tone
- Generate additional contractions during the scenario
- Program Fetal Heart Rate
- FHR Baseline
- Select variability
- Control episodic, periodic, and variable changes
- Generate FHR patterns at any time
- Listen to FHR in the External Fetal Monitoring or the Fetal Spinal Electrode Mode
- Review up to 2 hours of recorded fetal tracings
- Save/print fetal tracings for debriefing

Maternal Airway

- Program tongue edema and pharyngeal swelling
- Program laryngospasm
- Multiple upper airway sounds synchronized with breathing
- Nasal or oral intubation
- Sensors detect depth of intubation
- Head tilt/chin lift
- Jaw thrust
- Simulated suctioning techniques can be practiced
- Bag-Valve-Mask Ventilation
- Placement of conventional airway adjuncts
- Endotracheal intubation using conventional ETT
- Accepts supraglottic airway management devices
- Sellick maneuver brings vocal cords into view

Maternal Breathing

- Automatic chest rise is synchronized with respiratory patterns
- Independent left or right lung sounds synchronized with breathing
- Ventilation may be assisted using BVM, ETT, or LMA
- Ventilations are measured and logged
- Chest compressions generate palpable blood pressure wave form and ECG artifacts
- Detection and logging of ventilations and compressions
- Simulated spontaneous breathing
- Variable respiratory rates and inspiratory/expiratory ratios
- Bilateral chest rise and fall
- Normal and abnormal breath sounds
- Anterior auscultation sites

Maternal Cardiac

- ECGs are generated in real time with physiologic variations never repeating textbook patterns
- Heart sounds may be auscultated and are synchronized with ECG
- Optional automatic mode permits display of virtual dynamic ECG rhythms for each of the 12 leads

Maternal Circulation

- Measure blood pressure by palpation or auscultation
- Use real BP cuff to measure blood pressure
- Korotkoff sounds audible between systolic and diastolic pressures
- Oxygen saturation detected using real monitors
- Pulse sites synchronized with BP and heart rate
- Drug Recognition IV arm
- Bilateral IV arms with fill/drain sites
- Sub Q and IM injection sites
- Chest compressions are measured and logged
- ECG monitoring using real devices
- Defibrillate, cardiovert and pace using real devices
- ECG and defibrillation snap connectors
- Multiple heart sounds
- ECG rhythms are generated in real time
- Pacing may be practiced anteriorly to avoid having to roll the

patient during delivery

- Heart sounds synchronized with ECG
- Bilateral carotid, radial, and brachial pulses synchronized with ECG
- Pulses vary with blood pressure, are continuous and synchronized with the ECG even during a paced rhythm

Maternal Neural Responses

- Programmable blinking, dilation, and eye response to light
- Convulsions have programmable duration and intensity

Maternal Speech

- Prerecorded sounds
- Wireless two way streaming audio

Wireless Streaming Audio

- Create and store vocal responses in any language
- Instructor can simulate patient's voice and listen to caregivers conversation wirelessly
- Be the voice of the simulator and hear responses at distances up to 150ft (50m)

Maternal Articulation and Movement

- Realistic hip articulation for McRoberts maneuver
- Seizure/convulsions
- Tremors
- Able to position in knees/elbows position useful during shoulder dystocia
- Realistic rotation of the shoulder and hip joints
- Move Victoria from place to place like a real patient
- Legs bend at the knees
- Arms bend at the elbow and move laterally at the shoulder
- Supine or semi-recumbent positions
- Roll to left lateral position
- Put legs in stirrups

2.3 Birthing Baby

Birthing Baby Features

- Body with seamless joints for added realism
- Endoskeleton inside the baby provides a realistic shape, support, and human like movements
- Displays signs of central cyanosis
- Crying accompanied by head movement
- Heart and lung sounds
- Breech and vertex delivery capabilities
- Baby is programmable for interactive assessment for up to 5 minutes after delivery
- Practice umbilical cord clamping and cutting. Realistic composition and shape of disposable cord. Placenta is not disposable
- Sensors on the Birthing Baby hip track up/down and sideways movements during a breech delivery and display a real time 3-D model
- Sensors along the spinal cord can track, in real time, the movement of the baby, the exerted pulling force, and position of the head relative to the torso during normal delivery
- Head with fontanelles and sutures
- Head rotates, moves forward and back just like a real baby during delivery
- Head allows for forceps or vacuum augmentation during delivery
- Head flexes as it moves through birth canal
- Fully articulating fetal neck and limbs allow the practice of obstetrical maneuvers
- Fetal condition and release is programmable via wireless tablet PC

2.4 Other

Vital Signs Monitor

- Controlled via wireless touchscreen tablet PC
- Both maternal vital signs and fetal heart tones
- Use selected configuration or create your own configuration to mimic the monitors used in your facility
- Customize alarms
- Change maternal or fetal condition during the scenario
- Share images such as ultrasounds, CT scans, lab results
- Both maternal vital signs and FHT's can be seen at the same time
- Monitor can be configured by the instructor to suit the scenario

- Display up to 8 numerical parameters and up to 5 real time waveforms in manual mode or up to 12 real time waveforms in automatic mode

User Interface

- Powerful and intuitive UNI™ software with new 3-D animation of:
 - › Fetal descent through the birth canal
 - › Internal rotations of the fetus
 - › Instantaneous graphical display of pulling force applied to the fetus during labor
 - › Instantaneous graphical display of applied suprapubic pressure
 - › Instantaneous graphical display of Victoria's leg movement
 - › Instantaneous graphical display of baby's position. Delivery baby fitted with position sensors along the spinal cord to provide real time feedback of provider maneuvers
 - › Engagement and descent: programmable delivery system controls movement in the birth canal
 - › Programmable delivery system controls internal rotations
 - › Flexion and extension: mechanized fetal head simulates the natural movement at the time of crowning
 - › External rotation: structure of birth canal and fetus permits the realistic representation of the external rotation
 - › 3D animation developed during a scenario can be recorded and retrieved later for debriefing
 - › Sensors track student actions
 - › Changes in condition and care are time stamped and logged
 - › View the actions of up to 20 care providers using a responsive menu or write narrative
 - › Generate and share diagnostic lab results
 - › File sharing
 - › Links with optional recording and debriefing system integrating the event log with cameras and patient monitor
 - › Supplied with wireless tablet PC
 - › Includes 45+ preprogrammed scenarios which can be modified by the instructor even during the scenario
 - › Create your own scenarios add/edit
 - › Change simulator's condition during the scenario
 - › Automatic mode features interacting maternal, fetal and neonatal physiologic models
 - › Changes to the maternal model impact the condition of the fetus and in turn then impacts the initial APGAR score of the newborn
 - › Optional integrated three camera recording and debriefing solution

3. Victoria Setup

3.1 Initial Setup

Simulator Placement

Prepare the simulation area prior to unboxing the simulator. The simulator's designated area should have ample space for multiple participants to move about freely.

Since Victoria is fully functional in transit, have sufficient room which allows for her to be moved easily between simulation areas. Practice of critical team hand-offs, where most mistakes happen in patient care, is easily carried out with Victoria.

Remove the simulator from the box with the assistance of at least two persons. Victoria shipping support item is included to provide support to the simulator during shipping. Do not discard this item because it will be required for future shippings.



Straps are included to take Victoria out of the box. Avoid lifting the simulator by the arms as it could damage the shoulder joints. Rest the simulator on a patient bed capable of supporting the weight of a real adult patient.

Victoria is capable of bleeding fluid through the birth canal. Position Victoria on the birthing bed so hemorrhage fluid is redirected away from the simulator and into a collection bin. Do not allow fluid to reach Victoria's lower back.

Leg Assembly

Follow the steps below to install the lower legs.

Remove the legs when transporting Victoria inside a protective case.

1. Remove the fixed bolts from the knee joints using a hexagonal wrench.
2. Locate the lower leg, bolts, and wrench.
3. Gently roll back the skin to uncover the knee joint.
4. Insert the lower legs into the recess of the upper leg and insert the bolts.



5. Use two hexagonal wrenches provided to secure the knee bolts. Do not over tighten.



6. Gently roll the skin back into position.



7. Align the plastic snaps located on the leg and the skin and secure each snap.



Installing Birth Canal and Cervix

1. To install the birth canal, guide the perineum first through the cervix opening from inside the simulator toward the outside.

It is important to align the forked extension with the bottom center of the pelvic opening.



2. Next gently push the white frame into position so that it is held firm by the two soft flanges.



3. The urethral extension, attached to the birth canal, passes through the opening located at the top of the cervix wall.



4. Ensure that the cervix is also aligned with the forked extension sitting in the bottom center of the pelvic opening.
5. Gently push the rest of cervix in place.



6. Connect the urethral extension to the urinary fill port.



Victorias from serial number V1803569 and on are shipped with one fully dilated cervix and one normal cervix. The fully dilated cervix is recommended for difficult deliveries.

Follow steps 1 and 2 of the birth canal installation and follow the steps below to install the dilated cervix.

1. Pass the urethral extension through the opening at the top of the cervix



2. Ensure that the cervix is also aligned with the forked extension sitting in the bottom center of the pelvic opening



3. Gently push the rest of cervix in place.



4. Connect the urethral extension to the urinary fill port.



5. Hook the urethral extension into the holder at the top



Follow the steps below after installing either the normal or dilated cervix.

6. Gently accommodate the birth canal as shown in the picture.



7. Connect the clear lubrication hose located on Victoria's right side.



8. Connect the green bleeding hose located on Victoria's left side.



9. To secure the birth canal, gently move the 6 snaps counterclockwise to fasten them to the metal frame.



The birth canal is now attached.

To detach the birth canal and cervix, reverse the instructions.



Power Supply

1. Open the power input and communication ports cover located on the right side of Victoria.
2. Connect the power adapter labeled “Victoria Power Supply” to the power input port located on Victoria’s right side.



Once the battery is fully charged, Victoria can be operated on battery power for approximately 10 hours. The battery level is displayed on the UNI™ status panel. For more information on the battery indicator, go to the “Working with UNI™” section.

Do not store the simulator with a discharged battery. Re-charge the system at least once every 60 days when not in use. Otherwise, permanent loss of battery capacity may occur.

3.2 Birthing Baby Setup

Power Supply

1. Remove the power input port cover from the left foot.



2. Connect the power adapter labeled “Birthing Baby Power Supply” to the power input port located on the baby’s left foot.



3. Verify that the adapter jack is securely connected inside the port.

The face of the baby will flash blue during the charging process. Once the battery is fully charged, the flashing will stop and the cyanosis will remain steady. The baby can be operated on battery power for simulations up to approximately 4 hours. If blue light is steady immediately upon attaching the charger, the battery is fully charged. The battery level is displayed on the UNI™ status panel. For more information on the battery indicator go to the “Working with UNI™” section.

3.3 Control Tablet PC

The tablet PC is preloaded with the UNI™ control software used by the facilitator to initialize the simulator and control the vital signs.

The Victoria control computer package includes:

- Tablet PC with stylus
- Streaming audio headset
- Bump Case for Tablet PC
- RF communication module
- RJ45 cable

Before turning on the computer for the first time, please review the documentation included with the product for important care and warning information.

Using the Stylus

The tablet's stylus is a pen-shaped input device used to interact with files and programs.

- Left click: Tap screen with the pointer. Tap twice rapidly to double-click.
- Right click: Tap and hold a highlighted item or hold the button near the tip of the stylus and tap the item or text.

Calibrating The Stylus

As part of the initial setup process, calibrate the stylus using the Tablet and Pen calibration tool in the Windows® control panel. Complete the calibration process while holding the pen in a natural writing position for greater accuracy during normal use.

Wireless Communication USB Module

The controlling computer transmits the startup and control commands to the simulator through the USB RF communication module.

1. Connect the RF communication module to an available USB port on the tablet and secure the RF communication module to the tablet using the Velcro patch.



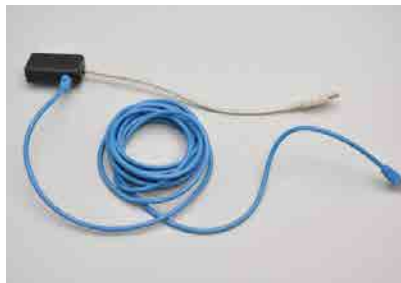
The tablet is now ready to communicate with the simulator wirelessly. For information about the signal strength indicator, go to the “Working with UNI™” section.

USB Communication Module Wired

The USB communication module is also equipped with a wired communication port used for diagnostics and service. In those instances where wireless communication is not allowed, the wire port can be used for transmitting the startup and control commands to the simulator

To connect the simulator to the Tablet PC using the wired option:

1. Connect the RJ45 cable to the USB communication module.



2. Connect the RJ45 cable to the communication port on the simulator's right side.



Do not connect the simulator to Ethernet cards, LAN networks, or unauthorized diagnostic equipment. Doing so may cause damage to the system.

3. Connect the communication module to an available USB port on the tablet PC.



The tablet is now ready to communicate with simulator.

Streaming Audio Headset

The computer system includes a headset that allows the facilitator to speak as Victoria's voice and listen to the participant's reply.

Connect the headset MIC and Speaker connectors to the designated ports on the left side of the tablet PC. Go to digital UNI™ User Guide under Menu > Help > Instruction Manual for more information about the streaming voice feature.

Always connect the streaming audio headset before starting the UNI™ software.



3.4 Virtual Monitor

The Gaumard Monitors software displays Victoria's simulated vital signs in real time. The interactive monitoring software is already installed on the virtual monitors PC.

Virtual Monitor PC Setup

Refer to the manufacturer's documentation included with the virtual monitor system components for important safety, installation, and start-up information before turning on the computer for the first time.

To setup the virtual monitor PC:

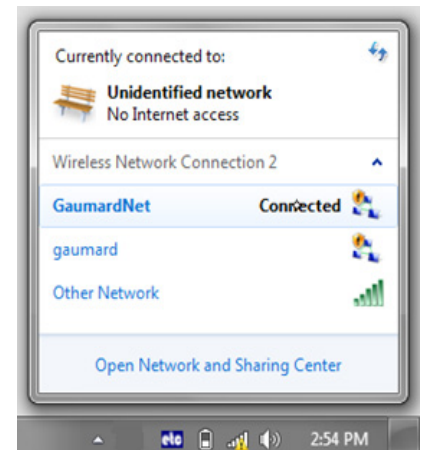
1. Place the all-in-one PC within line of sight of the controlling computer
2. Connect the power supply
3. Connect the USB keyboard and mouse receiver
4. Turn on the computer

Virtual Monitor Wireless Connectivity

1. The control PC and the all-in-one virtual monitor PC automatically establish a wireless link at startup. The wireless connection allows the Gaumard control software to transmit the vital signs information to the Gaumard Monitors software.



2. To verify the wireless link between the two computers, click the wireless icon located on the task tray. The wireless network name is configured at the factory and may differ from the one seen below. To troubleshoot connection issues between the virtual monitor computer and the controlling tablet, refer to Appendix.



Gaumard Monitors

1. After the wireless connection is established, double click or tap the Gaumard Monitors icon to start the vital signs software.



The Gaumard Monitors software is now ready to receive the vital signs information generated by the UNI™ control software.

For more information about the Gaumard Monitors software, please refer to the Gaumard Monitors user guide.

4. Working with Victoria

4.1 Airway

Nasal And Oral Intubation

Airway management techniques can be practiced on Victoria including BVM, nasal/oral intubation, and suctioning. Endotracheal tubes, NG tubes and LMAs can be used.



Use the Sellick's maneuver, if needed, to bring the vocal folds into view.

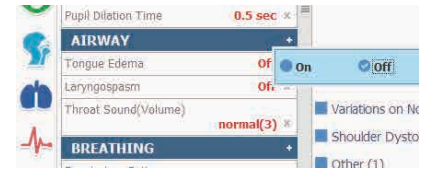
Procedure	Recommended Device Size
Intubation (Blade size)	Miller 4 or MAC 3.5
LMA	Size 4
Nasal Intubation	8 Fr catheter
Oral Intubation	ETT 7.0 or 7.5 no cuff

Do not introduce liquids when performing nasal and oral intubation. Doing so can permanently damage the system.

Always lubricate the tubing prior to performing any nasal or oral intubation.

Airway Complication

Use the software controls to enable the airway complications and make intubation more difficult. Victoria can display tongue edema and pharyngeal swelling using the software controls.



Intubation Sensor

Once intubated, sensors detect the depth of the intubation tube. The detection notification is displayed on the Log Panel.

If the tube is inserted too deep the left lung is disabled automatically, realistically demonstrating right mainstem intubation.

Correcting the tube position enables the left lung.

Airway Sounds

Victoria has multiple upper airway sounds synchronized with her breathing.

Teeth

Victoria is supplied with fixed upper and lower dentures.

4.2 Breathing

Respiratory Patterns

Users can easily control rate and depth of respiration; and choose independent right or left lung sounds, which are synchronized with selectable breathing patterns: Kussmaul's, Cheyne-Stokes, Biot's, Apneustic, apnea, and normal.

Lung Sounds

Multiple independent right and left lung sounds are available on Victoria: normal, none, wheezing, inspiratory squeaks, crackles, rales, asthma, bronchial, emphysema, muscle noise, pleural and rhonchi.



Pulmonary Ventilation

The airway contains nominal landmarks permitting either BVM or intubation exercises, including the use of a LMA. The trachea extends to the bronchi and lungs.



Ventilations volume and duration are measured and logged with the new effective CPR (eCPR) evaluator. Refer to the UNI™ digital user guide under the software Menu > Help > Instruction Manual for information

Ventilation Calibration

The ventilations sensor is factory calibrated prior to shipment. If user wishes to customize the specs for the sensor please follow the instructions outlined below.

The ventilation calibration wizard records the performance average of five ventilations as the benchmark for a correct ventilation. Perform the actions requested by the calibration wizard prompts. The CPR window evaluates provider performance based on the benchmark recorded during the calibration process.

To calibrate the ventilation performance benchmark using the UNI™ software:

1. Click Setup > Calibration > Ventilations, and click “Next”
2. The wizard prompts to perform ventilation #1
3. Perform the first ventilation. A green filled oval indicates that the ventilation was recorded successfully
4. Perform ventilation #2 as prompted by the wizard. A green filled oval indicates that the ventilation was recorded successfully
5. Continue through the calibration wizard to record a total of five ventilations

At the end of the calibration process, the wizard reports the average peak pressure, and duration values for the procedure. Click “Save” to store the calibration settings.

Chest Rise

Lungs expand normally permitting realistic chest rise. When starting the UNI™, the pre-programed profiles will load Victoria with a healthy respiratory pattern with normal chest rise.

Chest Compressions

Select a cardiac dysrhythmia such as ventricular fibrillation or asystole and instruct the provider to perform chest compressions. Monitor the depth and frequency of chest compressions from the CPR trainer window.



The compression sensor is factory calibrated prior to shipment. To customize the parameters for chest compressions please follow the procedure outlined in the compression calibration procedure.

Compression Calibration

The compressions sensor is factory calibrated prior to shipment. To customize the parameters for chest compressions please follow the procedure outlined in the compression calibration procedure.

The compression calibration wizard records the performance average of five compressions as the benchmark for a correct compression. Perform the actions requested by the calibration wizard following the most current CPR guidelines. The CPR window evaluates provider performance based on the benchmark recorded during the calibration process.

To calibrate the compression performance benchmark using the UNI™ software:

1. Click Setup > Calibration > Compressions, and click “Next”
2. Select the target compression depth for the chest compressions calibration criteria.
3. The wizard prompts to perform compression “#1”
4. Perform the first compression. A green filled oval indicates that the compression was recorded successfully
5. Perform compression # 2 as prompted by the wizard. A green filled oval indicates that the compression was recorded successfully
6. Continue through the calibration wizard to record a total of five compressions

At the end of the calibration process, the wizard reports the average peak, pressure, and duration values for the procedure. Click “Save” to store the calibration settings.

Do not perform mouth to mouth ventilation. Doing so may lead to formation of mold in the airway. The airway itself cannot be sanitized or cleaned.

Real CO2 Exhalation (Optional)

Victoria can exhale real CO2 via a CO2 cartridge. Once a CO2 cartridge is installed, use the software controls to adjust volume of CO2 exhaled. Victoria can also be operated without a CO2 cartridge installed. A virtual CO2 value is displayed on the virtual monitor PC.



CO2 Cartridges Care and Cautions

Due to shipping regulations, CO2 cartridges are not included with the system. The required 16g threaded CO2 3/8"-24UNF-1A cartridges can be purchased at most bicycle or hardware stores.

Review the safety and warning checklist information before using the CO2 feature.

Failure to comply with the warnings listed below and those included with the original cartridge packaging may result in serious personal injury.

- Always follow the manufacturer's safety and warning information included with the CO2 cartridge package.
- Never point a CO2 cartridge at yourself or others
- Do not use damaged CO2 cartridges
- Do not puncture the cartridge CO2 seal manually
- Do not expose the CO2 cartridges to high temperatures as indicated on the product's packaging
- Install threaded cartridges only (3/8"-24UNF-1A). Do not attempt to install a cartridge that does not meet the specifications listed in this document.
- Do not over tighten the cartridge into the simulator's cartridge harness
- Always verify that the CO2 cartridge is empty using the software diagnostics before removing it. Do not remove the CO2 cartridge if the simulator is not fully operational.

Installing the Cartridge

1. Securely hold the bottom of the CO₂ cartridge protective case with one hand and open it by twisting its top counter-clockwise with the other hand.
2. Continue to twist the protective case's top until it comes off.
3. If there is a cartridge inside already, please refer to the "Removing the Cartridge" section below.



4. Align and lower the new cartridge into its slot on the bottom half of the protective case.
5. Insert the CO₂ cartridge into the case, ensuring that the threads are aligned.
6. Screw the CO₂ cartridge into the case until it stops and it's tightly secured. The cartridge will feel cool to the touch as the case pierces the cartridge seal.



Once you have started screwing in the cartridge, do not stop or attempt to unscrew the cartridge. The casing will puncture the cartridge seal during the tightening process.

Hand tighten only. Do not over tighten

7. Once the cartridge is properly connected, place the top of the cartridge's protective case back into position and twist it back on firmly.

Connecting the Cartridge

1. Bring the CO₂ connecting tube to the right side of Victoria's torso and secure it into the white port.
2. The port is secured with a Luer-lock fitting and requires just a quarter turn to fasten it in place.
3. Ensure that all of the connections are firmly secure and locked in before proceeding.

Velcro is included to conveniently secure the cartridge protective case.

Optional:

If you wish to place the cartridge in a location further away from the manikin. Please use the 24" white extension tube. The extension tube can be attached between the Victoria and the connecting tube.



Removing the Cartridge:

1. Before replacing the cartridge, ensure that you have exhausted the content of the cartridge.
2. To exhaust contents of CO₂ cartridge please turn the feature on and allow to run until no CO₂ can be measured.
3. Securely hold the bottom of the CO₂ cartridge protective case with one hand and open it by twisting the top counter-clockwise with the other hand.
4. Continue to twist the protective case until the top comes off.
5. When the top comes off of the protective casing, the cartridge will be visible.
6. With the cartridge completely spent, twist the cartridge counter-clockwise to unfasten it for removal.
7. Remove cartridge

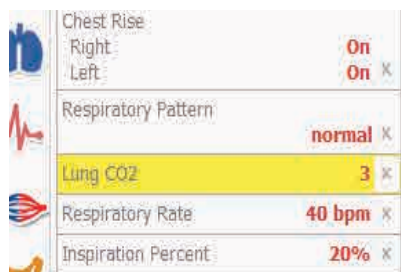


Do not ever point the CO₂ Cartridge at yourself or others

Adjusting CO₂ Output

After the cartridge is installed, adjust the “Lung CO₂” parameter in the UNI software to increase or decrease the volume of exhaled CO₂.

If a new CO₂ cartridge has been installed and lung CO₂ has been set to a value above 0, but exhaled CO₂ is not being detected by your equipment, please check your equipment and the simulator’s connection to the cartridge case.



4.3 Cardiac

Heart Sounds

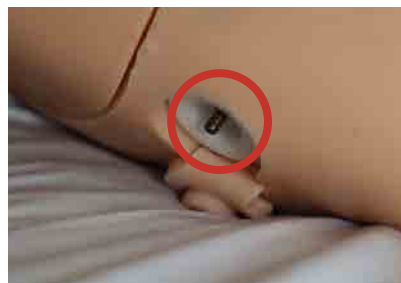
Victoria is equipped with several realistic heart sounds, which are synchronized with the user defined heart rate and cardiac rhythm. The heart sounds available include: normal, none, distant, systolic murmur, S3, S4, aortic regurgitation, aortic stenosis, mitral valve prolapse, mitral stenosis, mitral regurgitation and physiological S2 split.



ECG Monitoring and Electrical Therapy

Victoria is equipped with ECG snap connectors that allow the attachment of real ECG lead wires. This feature permits the user to track cardiac rhythms and events with their own equipment just like with a human patient. Victoria can be shocked or paced with real energy for cardioversion, defibrillation and pacing drills using the defibrillation snap connectors. AED will display Victoria's ECG, analyze her cardiac rhythm and advice action.

Defibrillation is only allowed on the apex and sternum snap connectors, marked in RED. NEVER deliver a shock to ECG snap connectors marked GREEN below. Doing so will not create a fire hazard, nor is there risk of shock to the provider, but internal damage in Victoria may result. This situation is considered improper use and is NOT covered by the Victoria warranty.



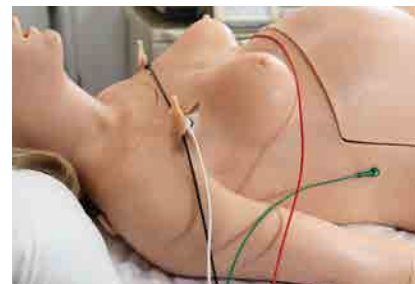
There are inherent dangers in the use of some medical devices. For simulations that incorporate electrical therapy of any kind, always know your equipment, and follow the device manufacturers' safety guidelines.

ECG and Electrical Therapy Checklist and Warnings

- Only deliver electrical therapy when the simulator is fully assembled, dry, and undamaged.
- Make sure the defibrillation snaps on the simulator are in good condition.
- Make sure the simulator is not in contact with any electrically conductive surfaces.
- Use the simulator only in a well-ventilated area, free of all flammable gases.
- NEVER attempt to service or modify any of the electrical connections, especially those between snap connectors and the internal electronics.
- Discontinue use if any wires are found exposed with damaged insulation.
- Do not allow defibrillation snap cable to connect to the ECG snap connectors. Doing so will cause internal damage on the simulator.

Instructions for Use

1. Turn on the simulator. Refer to the Equipment Set-Up section.
2. Open the ECG snap connector covers.
3. Connect the ECG lead wires to Victoria's ECG snap connectors.



4. Connect the ECG lead wires to the ECG monitor.
5. Turn on the ECG monitor.

Defibrillation Snap Connectors

The defibrillation snap connectors and “Defibrillation Snap Cable” allow providers to deliver electrical therapy at the sternum (right shoulder) and apex (left upper lateral) sites.



Sternum Snap



Apex Snap

Feature	Maximum
Defibrillation	360 Jules

The defibrillation snap connectors provide electrical therapy functionality that includes a detectable heart rhythm, cardioversion, pacing, and the detection of electrical therapy by the UNI™ software.

Using the Defibrillation Snap Connectors (Optional)

The “Defibrillation Snap Cable” connects to a real defibrillator and carries electrical therapy energy to the defibrillation snap sites. The snaps are color coded to identify the apex and sternum placement.



Gaumard manufactures a variety of simulator ready defibrillation snap cables compatible with most electrical therapy devices. For more information about simulator ready snap cables for a particular defibrillator, please contact Gaumard customer service.

Defibrillation Snap Cable	Location
Red Connector	Apex Snap
Black Connector	Sternum Snap

To use the Defibrillation Snap Cable:

1. Open the snap connector covers at the apex and sternum sites.



2. Connect the “Defibrillation Snap Cable” to the defibrillator.
3. Connect the red snap connector to the apex connector.
4. Connect the black snap connector to the sternum connector

The simulator ready defibrillation snap cables carry real energy. Handle them with the same care and precautions used with real pads and patches and follow the same directions included with the defibrillator’s “directions for use” documentation.

Do not apply electrical therapy or deliver a shock while holding the simulator ready snap connectors or while they are disconnected from the simulator.

Only deliver electrical therapy when the simulator is fully assembled, dry, and undamaged.

Do not use damaged snap cables, connectors, or medical equipment.

4.4 Cephalic

Tracking Eyes

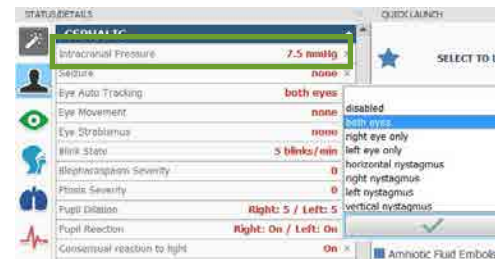
Victoria now features realistic tracking eyes. They can be used for more complete patient assessments. The eyes could be used to simulate stroke, head trauma, drug use, disease, cranial nerve impairment and/or other brain/muscle impairments.



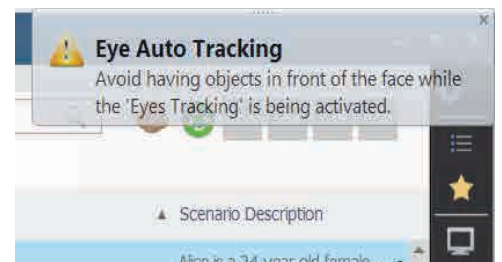
Automatic Tracking

Follow the steps below to utilize the “Eye Auto Tracking” feature.

1. Select “Eye Auto Tracking” in the Status/Details panel
2. Activate the tracking by clicking “both eyes”



A note will appear on the screen. Please ensure that Victoria's hair or other objects are clear from her eyes and forehead when activating the Automatic Tracking feature.



3. Stand in front of Victoria
4. Place your finger or pen 6" (15.2 cm) from Victoria



- Move your finger or pen slowly from side to side in line with her eyes and within the width of her face.



Keep the object within the width of Victoria's face to ensure accurate responses.

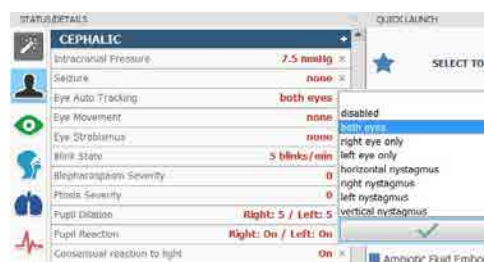
- Place your finger or pen to the center of her eyes and close to Victoria's face, Victoria's eyes will become crossed.



Automatic Tracking only moves Victoria's eyes horizontally. To activate vertical movement as well, refer to the Joystick section.

Victoria could demonstrate both automatic tracking and nystagmus.

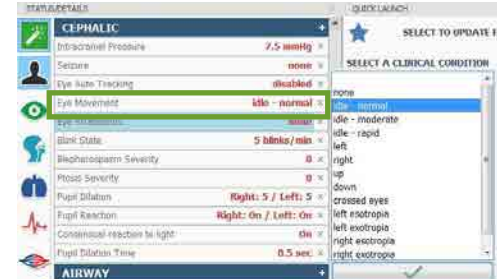
Activate the feature under "Eye Auto Trackin".



Eye Movements

Set the eyes to several different static positions.

1. Select “Eye Movement” from the Status/Details panel
2. Click “Idle-Normal” to simulate a state of random eye movements like in a real patient
3. Select “Idle-Rapid” to simulate hypervigilance in a patient.



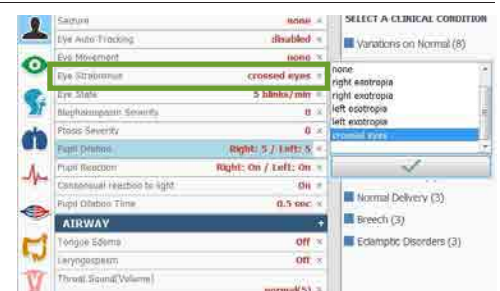
Combine automatic tracking with the idle control for a realistic look.

Eye movements will stay active until “None” is selected. Activating different features (joystick, tracking or eye movement) will put idle on pause until the feature is disabled .

Strabismus

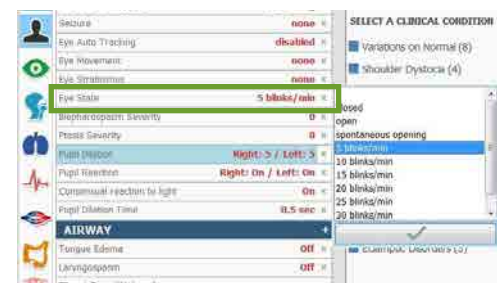
Activate strabismus by selecting “Eye Strabismus” in the Cephalic category.

Strabismus will remain active for all eye movements including Automatic Tracking and Joystick.

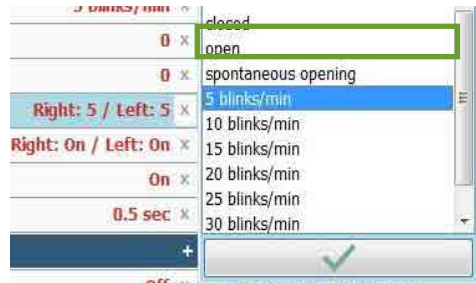


Blinking

The Eye State feature allows you to set the blink at different rates. Select “Eye State” to open the menu for different blinking options.



“Spontaneous opening” sets the eyes to random opening and closing.



Blepharospasm

Activate the blepharospasm feature by clicking “Blepharospasm Severity”.

When the setting is set to zero, the feature is turned off.



Checking “Spontaneous” causes the twitching to occur at random intervals.

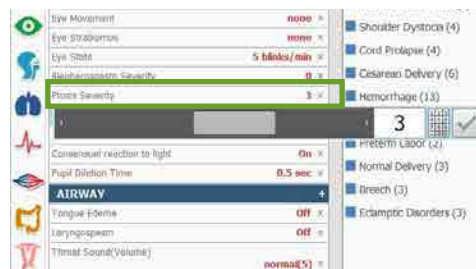


Blepharospasm can operate simultaneously with any other eye states.

Ptosis

Activate the ptosis feature by clicking “Ptosis Severity”.

When the setting is set to zero, the feature is turned off and Victoria’s eyelids are normal.

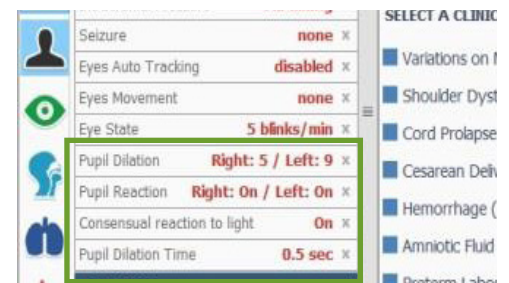


Increase the severity of the eyelid droop by increasing the numerical value.

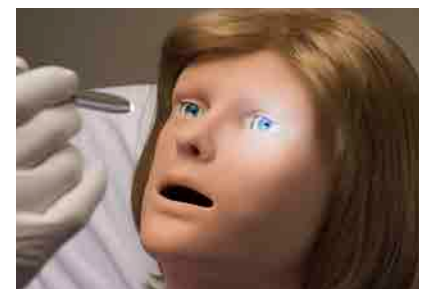


Pupil Dilation

In a normal state, Victoria's pupils will constrict and dilate together when a pupil is stimulated. Turning off the "Consensual reaction to light" will make the pupils react independently.



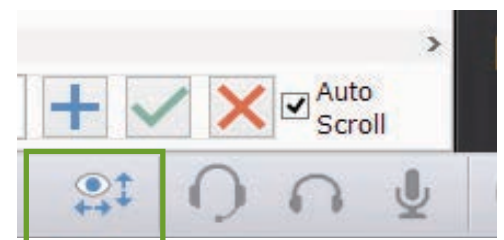
The constriction/dilation can be disabled with the "Pupil Reaction" control.



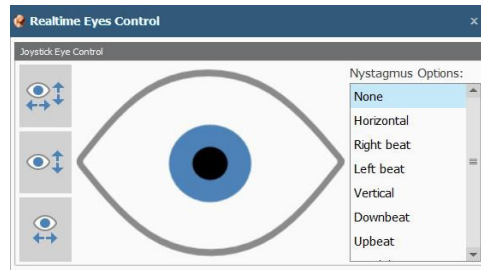
Joystick Control and Nystagmus

Manually control Victoria's eye movements using the Joystick.

Select the Joystick icon located on the lower-right of the screen.

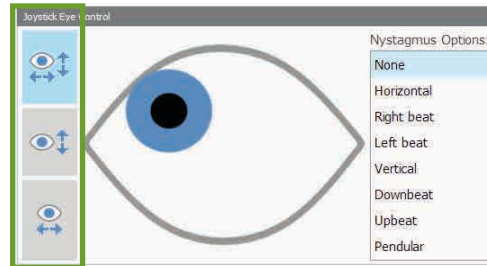


The “Realtime Eyes Control” will appear with a diagram of the current eye position.

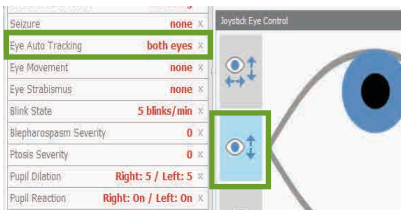


The modes on the left can be selected to move the eyes in both or either horizontal and vertical directions.

These controls can be combined with automatic tracking or preprogrammed movements.

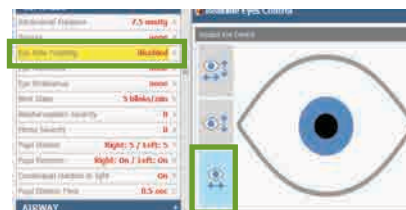


One control has to be vertical motion and the other horizontal. Otherwise the feature will be disabled.

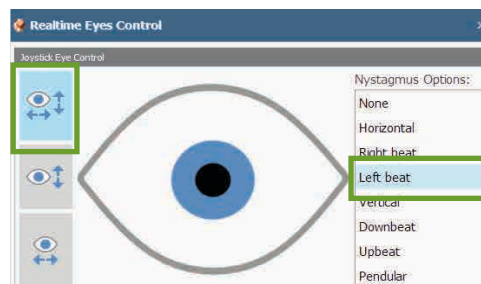


Horizontal and vertical motion

Horizontal Eye Tracking with horizontal joystick control = feature disabled



The “Nystagmus Options” on the right activates the type of Nystagmus in any of the eye movements. Nystagmus can be combined with any of the modes on the left.



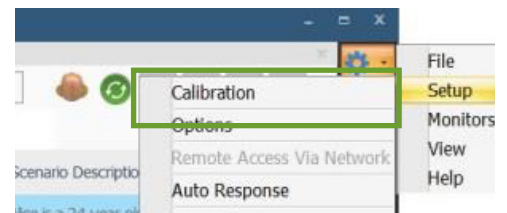
Automatic Calibration

Victoria's eyes are calibrated from the factory. However, a calibration can be performed if needed. If there is a difference of speed with the eyes do the following:

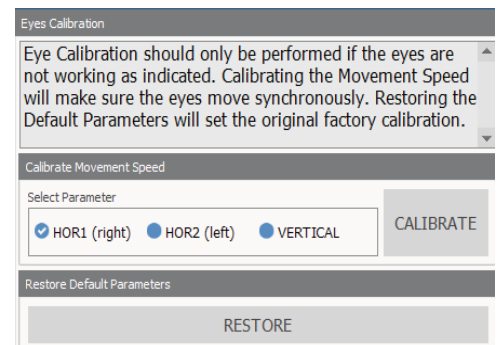
1. Click the gear in the upper-right corner of the screen.



2. Then, click "Setup" and "Calibration"



3. Restore the settings from factory or calibrate each eye speed
4. Click "Finish" when calibration is complete



Seizures

Victoria features a convulsion mechanism that can be used in conjunction with scenarios.

4.5 Circulation

Bilateral Pulses

Victoria's palpable pulses (carotid, brachial, and radial) are dependent on blood pressure. Users can also disable distal pulses to simulate severe hypotension.



Manual Blood Pressure

Programmable blood pressure can be measured using any standard sphygmomanometer. Korotkoff sounds are heard between systolic and diastolic pressure readings.

Instructions for Use

1. Place the cuff around the simulator's upper left arm with the cuff mark at the medial site of the bicep brachii, about an inch (two cm) above the anterior elbow.

Placing the cuff differently might give an incorrect reading.

2. Calibrate the BP arm, if it has not been calibrated. To calibrate the BP arm please follow directions in Manual Blood Pressure Calibration section.
3. Inflate the BP cuff, and auscultate Korotkoff sounds as you would a normal patient.

Manual Blood Pressure Calibration

Before starting the calibration process, place the blood pressure cuff on the simulator as it would be placed on a real human patient.

To calibrate the blood pressure feature using UNI™ software:

1. Click Menu > Setup > Calibration > Blood pressure and click “Next”
2. Set the pressure on the BP cuff to 0 (i.e. cuff valve open) as prompted by the calibration wizard.
3. Click the “OK” button to record the current cuff pressure for the interval. A green filled oval indicates the pressure interval was recorded successfully.
4. Set the pressure on the BP cuff to 20 mmHg as prompted by the wizard and then Click “OK” to record.
5. Continue increasing the BP cuff pressure as indicated by the prompt and recording the pressure intervals.
6. At the end of the calibration wizard, click “Finish” to close the calibration wizard.

Non-Invasive Blood Pressure

Victoria's upper left arm can generate palpable oscillations that simulate blood flow. This allows care providers to monitor Victoria's blood pressure using a non-invasive blood pressure cuff and oscillometric monitoring equipment.



Complete the NIBP calibration process before using the feature for the first time. The NIBP feature is calibrated to work with one cuff at a time.

Feature	Size
NIBP Cuff	Adult Regular (26cm - 36cm)

Enabling the NIBP Feature

To enable the NIBP feature, go to Setup > Options > Victoria Features tab and checkmark “Use automatic NIBP”.

Enabling the automatic NIBP function disables the manual blood pressure method feature.

NIBP Calibration

Locate the “NIBP Calibration KIT” and follow the steps below to connect the kit bulb to the NIBP cuff line. The kit bulb is used to set the NIBP cuff pressure to the pressure intervals requested by the blood pressure calibration wizard.



To setup the NIBP cuff for calibration using the NIBP calibration kit:

1. Disconnect the NIBP cuff from the monitoring equipment.
2. Connect the kit bulb included with the “NIBP calibration kit” to the NIBP cuff line. The kit adapters included fit a number of different type of connectors found on most NIBP cuffs as seen.
3. Place the NIBP cuff on the left arm following the placement techniques used on a real human patient.



NIBP Connector Type 1



NIBP Connector Type 1



NIBP Connector Type 3



Closeup of NIBP Connector Type 3

4. Leave the cuff on the arm and calibrate the blood pressure feature using the software blood pressure calibration wizard and the kit pressure bulb.
5. After the calibration process is complete, disconnect the calibration kit and connect the cuff to the electronic automatic blood pressure monitor.

It is recommended that the NIBP cuff remains on the arm after the calibration process is complete. Removing and replacing the NIBP cuff on the arm can affect the accuracy of the readings. If the cuff must be placed on the simulator as part of the exercise, the provider should place the cuff on the arm in the same location it was placed during calibration process.

Drug Recognition

The drug recognition feature can be used to simulate drug administration by RF recognition of a programmed syringe filled with water. UNI™ identifies the programmed drug type and volume injected into veins of the right lower arm.

This feature can also be used to practice drug administration to patients using IV procedures. Physiologic changes as a result of the medications administered are calculated by the “physiologic” model.

The left arm can also be used to practice IV procedures without using programmed syringes.

Physiologic changes as a result of the medications administered are calculated by the physiologic model only when using UNI™ in automatic mode.

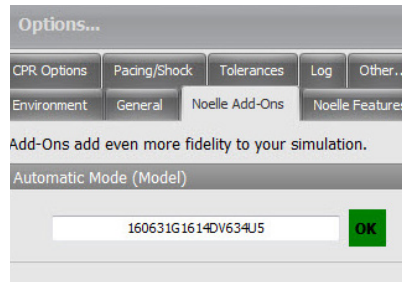
Programming the Syringes

The syringes supplied with the Drug Recognition Arm must be programmed before use. Each syringe will be linked with a specific drug and concentration. You only need to program the syringes once unless you wish to change the drug and concentration associated with it. Follow the instructions below to program the syringes.

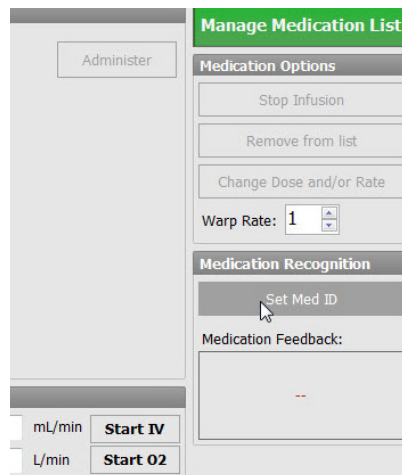
The simulator must be powered on when working with the drug recognition arm. This includes calibration, purging, draining, IV infusion, Set Med ID and injecting fluids. Failure to do so will permanently damage the simulator and void the warranty.

1. Set the UNI™ operating mode to Automatic.

If the Automatic mode is not available, enter the activation code on the Victoria Add-Ons tab in the Setup > Options menu.



2. From the Setup menu or the Medication page, click on Set Med ID.



3. The Set Medication Identifier dialog box is displayed. This dialog box is used to program each of the syringes provided with a specific drug and concentration.



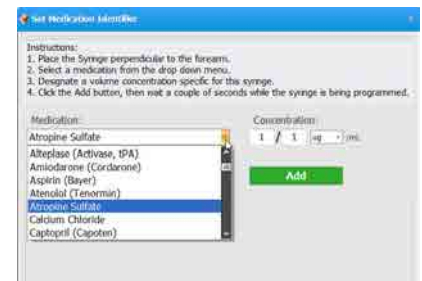
4. Rotate the lower right arm so the palm of the hand is facing up.
5. Place the syringe holder into the simulator's right wrist as shown.



6. Place the syringe without the needle into the holder. The syringe must be perpendicular to the surface of the forearm as shown.

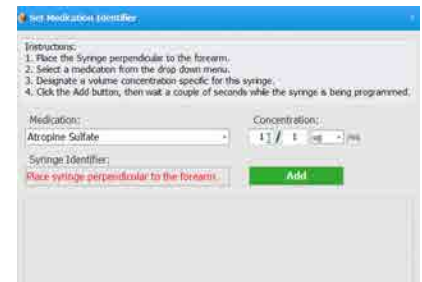


7. Select a drug from the drop-down menu.



8. Assign a volume concentration for this syringe.

When the syringe is ready to be programmed, the Syringe Identifier will say "Ready!" and the Add button will be enabled.



9. Click on the Add button and wait while the syringe is being programmed.



10. After the syringe is programmed, it will be listed on the Set Medication Identifier dialog box.

If there is a problem with the programming of the syringe, click the Retry button until you see the drug listed on the Set Medication Identifier dialog box.

11. After the drug is listed on the Set Medication Identifier dialog box, identify the syringe with the drug name and concentration using the labels provided.
12. Repeat steps 5-10 to program additional syringes.

If you accidentally misplace a syringe, you must delete the drug from this list, and reprogram a new syringe with this drug and concentration.

13. You may delete a drug ID at any time. First, highlight the desired drug. This enables the Delete Selected Medication button. Click on this button to remove the drug from the list.

Instructions for Use

1. Power on the simulator by starting the UNI™ software. Select Victoria from the menu and click start.
2. Locate the IV Filling kit, which contains: Drainage tube with black tip, filling tube with white tip, and syringe.
3. Attach the drain tube to the black drainage port on the right arm and place the end of the drain hose inside a container.



The location of the container must be lower than the arm in order to siphon the fluids in the next step.

4. Next, attach the fill syringe with fluids to the white port.



5. Depress the syringe until fluids flow through the drainage tube into the container.



6. Remove the drain tube and the fill syringe.
7. Check which drugs have been programmed to a syringe by clicking on “Setup”, then “Set Med ID”.

If the required drug is not displayed on this list, program the necessary medication onto a tagged syringe. Otherwise, exit out of the Set Medication Identifier dialog box and proceed to the next step.

8. Fill the preprogrammed syringe with water or simulated blood.

Use only Gaumard’s provided simulated blood. Any other simulated blood brand containing sugar or any additive may cause blockage and/or interruption of the vasculature system.

9. Inject one of the veins posterior to the hand, or one of the veins anterior to the arm in the forearm. For IV infusion exercises, make sure to place a tagged syringe on top of the arm. The tagged syringe must be close to the arm for the drug recognition module to function properly.

Maximum amount of fluid injected without draining should not exceed 40 mL and the maximum injection rate is 1L/hr.

The software recognizes the administered drug and calculates the dosage given and the current concentration of the drug in the simulator. This information is shown on the Drug page. The log panel also records the drug detected.

In addition to calculating the dosage and concentration, the software changes the vital signs of the simulator automatically to reflect the effect of the medication applied.

If the software does not recognize the drug that is being administered, the Log page reports “Detected (Medication): Unknown Med” followed by the amount of drug detected.

If you are running a branching scenario where a drug is added as a path in one of the nodes, the software automatically checks the action and moves to the next node if no other actions are pending.

At the end of every simulation session, you must purge the IV system with clean water with the simulator powered on. If the drug recognition arm is not going to be used for a week or more, purge the system with 70% isopropyl alcohol solution. Failure to do so may permanently damage the system.

Infusion Calibration

IV medication infusion calibration is only performed when the infusion rate information listed on the Drug panel is inaccurate. The system is calibrated at the factory prior to shipment. To re-calibrate the IV medication infusion functionality of the drug recognition arm, follow the steps below.

1. Turn on the simulator
2. Locate the drug recognition fill kit and attach the drain hose to the black output port. Place the end of the drain tube inside a container lower than the arm in order to siphon the fluids in the next steps.

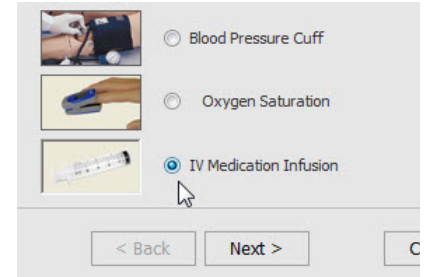


3. Next, attach a filled syringe with clean water to the white port.
4. Insert water in the system until fluids flow through the drainage hose into the container. The fluid drained must flow in a downward direction.

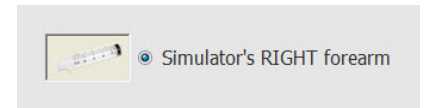


You must always have water in the IV vasculature for the drug recognition module to work.

5. Go to the Setup menu and click on Calibration. Select “IV Medication Infusion” and click “Next” on the Calibration dialog box.



6. Select the arm to calibrate and click next.



The calibration information box is a reminder that the IV vasculature must be filled with fluid before continuing.

7. Follow the instructions and insert 20 ml of fluids in the forearm using the fill syringe. Remember to keep the drain tube connected throughout the calibration process
8. The value in the middle of the window will begin to update as you slowly insert the fluid. After inserting 20 mL, click “OK”.
9. The word “Done” will flash in the middle of the window, and the oval will fill green temporarily.
10. After a few seconds, the “Finish” button will be enabled and the oval will default back to gray.
11. Click “Finish” to save the new calibration.

IV Arm

Victoria has a regular IV training arm on her left side that can be used for bolus or intravenous infusions as well as for drawing fluids.

Do not attempt to fill IV system without the drain connector in place.

Always leave the drain port connected when injecting fluids into the system.

Use only Gaumard's provided simulated blood. Any other simulated blood brand containing sugar or any additive may cause blockage and/or interruption of the vasculature system.

Always flush the IV system with distilled water at the end of every simulation.

Instructions for Use

1. Power on the simulator by starting the UNI™ software. Select Victoria from the menu and click start.
2. Locate the IV Filling kit, which contains: drainage tube with black tip, filling tube with white tip, and syringe.

3. Attach the drain tube to the black drainage port on the left arm and place the end of the drain hose inside a container.



The location of the container must be lower than the arm in order to siphon the fluids in the next step.

4. Next, attach the fill syringe with fluid to the white port.



5. Depress the syringe until fluid flows through the drainage tube into the container.



6. Remove the drain tube and the fill syringe.
7. To simulate a patient with no accessible peripheral IV sites, connect only the syringe. Pull the plunger to create suction, which will collapse the veins. Disconnect the syringe tube from the port while maintaining suction. The port will seal and the veins will remain collapsed.

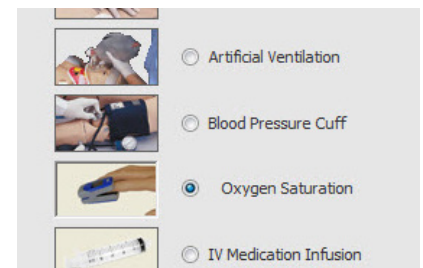
Oxygen Saturation

Use commercially available monitors to read oxygen saturation from the left index finger. Before using the oxygen saturation feature for the first time, calibrate the simulator to work with the oxygen saturation monitor to be used during the exercise.

O₂Sat Calibration

To calibrate the oxygen saturation, follow the steps below:

1. Make sure that the oximeter is turned off. Place the oximeter sensor all the way into the index finger, making sure the finger is at the center covering the emitting and sensing elements.
2. Go to Setup > Calibration and select “Oxygen Saturation”. Click “Next”.
3. A message box is displayed to remind you to have the oximeter turned off. Click “OK”.
4. Select “left finger” then click “Next”.



5. Turn on the oximeter and click “OK” on the dialog box.
6. The oxygen saturation calibration dialog box is displayed (for 98%).
7. Using the arrows on the left column of the calibration dialog box, adjust the reading on the oximeter monitor screen, to match the 98 displayed on the UNI™ screen.

For large increases or decreases, use the triple arrows. For moderate changes, use the double arrows. Use single arrows for small changes of one or two percent reading (only for 98% calibration).

To ensure proper calibration, always allow the oximeter to stabilize readings by waiting 20-30 seconds after the on screen value is displayed. After the value on the oximeter screen stabilizes, click “Next” to continue calibration.

8. Click “OK”. The calibration oval blinks green before showing the next value.
9. The oxygen saturation calibration dialog box for 80% is now displayed. Calibrate using the instructions from step 7 and 8.
10. The oxygen saturation calibration dialog box for 60% is now displayed. Calibrate using the instructions from step 7 and 8. Once you achieve the desired results, click “OK”.
11. After the calibration oval blinks green, the following dialog box will be displayed, indicating that the calibration has been completed.
12. Click Finish.

Instructions for Use

1. Start UNI™ and establish communication with the simulator.
2. Connect the oximeter probe to the left index finger of the simulator.
3. Turn on the monitor.



Co-oximeters that in addition to reading oxygen saturation also read carbon monoxide (SpCO) and methemoglobin (SpMet) are not supported and may provide inaccurate readings.

4.6 Systemic

Intramuscular Injection Sites

Intramuscular injection sites at quadriceps and deltoids

Do not inject fluids into the IM sites.

Urinary Catheterization

Victoria has an anatomically correct urethra for catheterization exercises.

The reservoir can be filled with 200 mL, and the fluids can be drained out using a urinary catheter size 16Fr.

Please note that the PPH cover includes catheterization for the normal perineum and the 4th degree perineum.

Instructions for Use

To set up your Victoria for urinary catheterization, follow the steps below:

1. Locate the urethral extension connected the urinary bladder fill port on the left lower section of the abdominal cavity.



2. Disconnect the urethral extension from the urinary bladder fill port by depressing the white connector.



3. Locate the urinary bladder fill kit and connect the syringe with the filling tube to the white port labeled as urine.



4. Fill the bladder with fluid up to 200 ml



5. Reconnect the urethral extension to the urinary bladder fill port



6. Locate the urethra opening on the upper section of the birth canal.



7. Use urinary catheter size 16Fr to drain the urinary fluids.

Bowel Sounds

Victoria contains bowel sounds, which are located on the contraction abdominal cover. Use the bowel sound controls to change the bowel sound types and adjust the volume levels. Auscultate the bowel sounds using a real stethoscope.



4.7 Birthing Baby

Overview

Victoria Birthing Baby is a full-term tetherless neonate with realistic weight (5-6 lbs) and length (19.5 inches). This baby features seamless joints and lifelike skin for added realism.

The main features are:

- Tetherless
- Realistic landmarks
- Head with fontanelles and sutures
- Programmable heart and lung sounds, crying and cyanosis
- Practice of umbilical cord clamping and cutting is possible due to realistic composition and shape of disposable cord
- Head allows for forceps or vacuum augmentation during delivery
- Breech and vertex delivery capabilities



Range of Motion

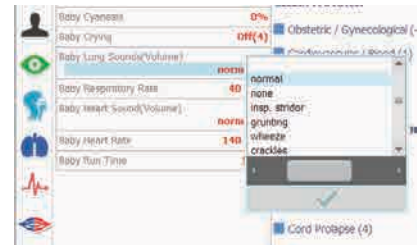
Endoskeleton inside the baby provides a realistic shape, support, and human like movements supporting true “Care in Motion” simulation.

The Birthing Baby movement and articulation include:

- Jointed arms and legs are useful during dystocia and breech exercises
- Sensors on the Birthing Baby hip, can report up/down and sideways movement during a breech delivery
- Sensors on the Birthing Baby neck and torso, can report in real time, the exerted pulling force during delivery and position of the head relative to the torso
- Head flexes as it moves through birth canal
- Baby vital signs after delivery

Auscultation

Auscultate heart and lung sounds with a real stethoscope after delivery. Use the control software to program the heart and lung sounds.



Crying

Use the control software to activate fetal crying.

The baby will begin crying 10 seconds after being separated from the mother, and continue to cry only for the first minute after being delivered.

If heart and lung sounds were selected, they can be auscultated after the crying stops. The sounds can be active for up to five minutes following delivery.

If heart and lung sounds are selected but no crying, then the heart and lung sounds are activated immediately following delivery.

Setting the baby's vitals is only possible while the baby is inside the womb; once it is delivered, vitals cannot be changed.

In the event that the birthing baby loses crying or heart and lung sounds after delivery, please initialize a hard reset by connecting the baby to the charger for approximately 30 seconds. Please refer to the instructions in the equipment set-up section above.

Contact Tech support if further assistance is needed.

Cyanosis

The baby can present signs of distress at birth such as cyanosis. Use the control software to display central cyanosis prior to delivery.



4.8 Obstetrics

The following features enhance Victoria obstetric capabilities:

Pelvis with Anatomic Landmarks

Victoria has a realistic pelvis with anatomic landmarks. This includes the ischial spines, the coccyx, and pubic bone.

Ischial Spines

- Train on identifying the location of the ischial spines.
- Feel the ischial spines to estimate the progression of the fetal head, shoulder, buttocks or feet through the birth canal.

Coccyx and Pubic Bone

- Palpate the coccyx and pubic bone during a vaginal examination to evaluate its shape.
- Use as a reference point when measuring the size of the pelvis.

Articulation and Movement

Victoria has realistic movement and articulation that enhances the delivery positions:

- Realistic hip articulation and range of motion in the legs for McRoberts maneuver
- Strong hip-joints allow the legs to hyper flex against the body during McRoberts maneuver
- Able to position in knees/elbows position useful to resolve shoulder dystocia
- Able to position in supine or semi-recumbent positions
- Supports roll to left or right lateral position
- Hipjoint articulation allows the legs to rest comfortably on stirrups and give the provider ample space for examinations.
- Sensors detect the simulator's position on the birthing bed be it supine or Gaskin (hands and knees).

Epidural Insert

The lumbar insert provides a lifelike representation of an adult spinal segment. The Insert consists of the skin layer, subcutaneous layer, simulated ligamentum flavum, and lumbar vertebrae (L2, L3, L4, and L5).



The vertebrae is optimized to provide a realistic tactile feedback for the injection process. The skin and subcutaneous layer can be palpated for optimized positioning of the needle between the vertebrae.

The replaceable epidural insert features the following characteristics and functions:

- Simulated tissue layers
- Anatomic landmarks
- Supports needle insertion between vertebrae with lifelike needle resistance
- Simulates the resistance and pressure change felt when traversing the ligamentum flavum and entering the epidural space
- Needle depth detection and software logging
- Realistic tactile feedback

Care and Cautions

- Disconnect the power cable from the power port located in the right side of Victoria before turning the simulator into a lateral right position.
- Do not use iodine or Betadine type solutions; these will most likely permanently stain the simulator.
- The use of needles larger than 18 gauge will reduce the lifetime of the insert.
- Clean the insert with a cloth dampened with diluted liquid dishwashing soap. If medical adhesives remain on the skin, clean with alcohol wipes and immediately wipe the area with a clean cloth dampened with clean water.
- Apply talcum powder on the insert surface to reduce tackiness. Reapply as needed.

Injection Detection within Dural Space

The epidural injection site is equipped with a depth sensor that informs the instructor, via the software log, when the needle is positioned within the dural space. If the needle is inserted too far, traversing the dural space and touching the spinal dura, the software logs “Insertion too deep”.

Do not inject fluids inside the epidural space. The epidural feature was designed to simulate the correct positioning of the epidural needle within the epidural space, while recognizing anatomical landmarks and familiarizing the learner with the feel of the needle traversing through the lower back.

Directions for Use

Remove the power cable from the power port located in the right side of Victoria before setting the simulator in a lateral right position.

1. Turn on the simulator using UNI™.
2. Position the simulator in a sitting or recumbent position.
3. Perform pre-operative procedures such as cleaning and draping.
4. Insert epidural needle and simulate infusion of analgesia.



Replacing the Spinal Insert

1. To remove the Spinal Cord Insert, gently start pulling edges with both hands until the insert is fully removed.



2. When replacing the spinal cord insert, orient it with the skin layer facing outwards.



3. To correctly locate the Spinal Cord Insert, gently slide it into position on Victoria so that the four outer walls align.



4. Once aligned, continue to push the insert into place. The insert is completely in position when the skin of the simulator is flush with the skin of the insert.

Do not grasp the skin layer directly as applying force in this area will damage the skin and possibly the underlying layers. Using the Release Tab to remove the Insert will extend the life of the Insert.

Abdominal Covers

The Victoria package includes four interchangeable abdominal covers with seamless attachments. The modular abdominal covers include a concealed seam between cover and torso endoskeleton. Each cover has unique features that enhance the realism of several labor and delivery simulation exercises.

Palpation Abdominal Cover

Palpation full-term abdomen has a smooth feel with lifelike roundness and firmness. Within Victoria's pregnant belly, the unborn fetus floats freely inside an amniotic sack which provides tactile feedback and resistance when performing Leopold's maneuvers or external version exercises. Place the palpation cover securely on the simulator for providers to practice Leopold maneuvers or external cephalic version exercises.



After the exercises are completed, remove the palpation cover and store it in a cool and dry place.

Always remove the cover at the end of the palpation exercises to prevent damage to the simulator. The weight of the palpation cover can add unnecessary stress to Victoria's midsection if left installed for more than two hours.

Contraction Abdominal Cover

The contraction abdominal cover realistically relaxes and firms with every contraction. This human-like behavior allows providers to palpate contractions during assessment. Attach a **real** fetal monitor directly to the abdomen to track the fetal heart rate and contraction frequency, intensity and duration. Additionally bowel sounds can be auscultated with a real stethoscope.



Refer to the Delivery and Labor section below for information on how to install the contraction abdominal cover.

Cesarean Section Abdominal Cover

The Cesarean section abdominal cover features a soft dissectible abdominal insert which includes realistic skin, subcutaneous layer with simulated blood, fascia, rectus muscle, and peritoneum.



During a Cesarean section scenario, the cesarean cover allows providers to perform a surgical incision upon the soft insert to deliver the fetus. For information on how to install the Cesarean section abdominal cover, refer to the Cesarean section abdominal cover section below.

Postpartum Hemorrhage (PPH) Abdominal Cover

Postpartum Interchangeable abdominal cover integrates the reproductive system with hemorrhaging capabilities to facilitate the transition between delivery and postpartum simulations. This cover includes an integrated palpable uterus, adjustable uterine firmness, and uterine and vaginal hemorrhage.

Realistic Birth Canal with Dilating Cervix

Anatomically correct perineum, birth canal, and dilating cervix.

Birth Canal Maintenance

- Ball point pens, ink and markers permanently stain the birth canal insert
- Do not wrap this or any other Gaumard product in newsprint
- The birth canal insert can be cleaned by wiping with a mild solution of soap and water. After cleaning, dust with talcum powder
- Store the unit in a cool, dry place
- After exercise is completed, DO NOT leave Birthing Baby in contact with the birth canal
- Always lubricate the birth canal prior to delivery using mineral oil provided with the simulator
- The birth canal insert is attached to the pelvis of the simulator. Only remove the insert when replacement is necessary

4.9 Labor and Delivery

Normal Labor and Delivery

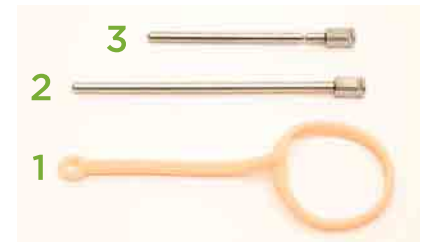
Birthing Mechanism

The precision birthing mechanism is an electro-mechanical assembly located inside the abdominal cavity that both pushes and rotates the fetus as it transverse the birth canal. The birthing mechanism locks on to the fetus throughout delivery to ensure precise and repeatable internal and external rotations. This precision delivery system accompanied by the realism of the Birthing Baby renders the most life-like birthing simulation to date.

The fetus is equipped with an internal locking mechanism. While the fetus is locked onto the birthing arm, sensors detect the pull force applied to the fetus by the provider. The intelligent system relays the vital sign parameters to the baby immediately prior to disengaging the locking mechanism.

To connect the fetus to the birthing mechanism for a delivery there are three required tools:

1. **Baby Delivery Ring** - Assists in maintaining the proper position of the baby during internal and external rotations throughout the delivery.
2. **Breech Delivery Rod** - Stabilizes the fetus during breech delivery.
3. **Vertex Delivery Rod** - Stabilizes the fetus during vertex deliveries.



Directions for Use



1. Position the Birthing Baby on the cradle.
2. Remove the plug in the baby's perineum for vertex delivery. Removing the plug reveals vertex delivery port.



3. Introduce the vertex delivery rod (item 3 listed above) inside the fetus vertex delivery port while applying gentle pressure upon the baby's chest with your free hand.



4. Verify that the ridges of the vertex delivery rod are facing up and that the rod reaches the end of the port.
5. Pull back on rod to verify that it is locked into place.



Preparing for a Vertex Delivery

1. Thoroughly lubricate the fetal head and shoulders, plus the birth canal insert and cervix, using the mineral oil provided.



Always lubricate the fetus and the birth canal before every delivery with the mineral oil provided. Failure to do so will result in damage to the birthing mechanism and the birth canal.

2. Lubricate the placenta.



Self-Lubrication

Victoria is equipped with a software controlled self-lubricating birth canal system. It ensures the birth canal and the fetus remain lubricated during a lengthy delivery.

As the fetus enters the birth canal, two openings in the birth canal wall secrete mineral oil onto the fetus. The internal mineral oil reservoir has a maximum capacity of 10ml and can lubricate up to 5 deliveries.

Always apply lubrication manually before every delivery. The self lubricating birth canal is not a substitute for the manual procedure of lubricating the Birthing Baby, cervix and birth canal.

To fill the lubrication reservoir:

1. Find the mineral oil dispensing syringe with filling tube. Fill syringe with mineral oil.
2. Purge the lubrication reservoir to make sure it is empty. Apply suction with the empty syringe to remove any remaining lubricant.
3. Locate the white lubrication reservoir port on the right side of Victoria's abdominal cavity, labeled as lube.
4. Connect the syringe with filling tube to the lubrication reservoir port and inject the fluid into the reservoir.
5. The reservoir capacity is 10ml. This lubrication will last for approximately 5 deliveries.
6. To refill the lubrication reservoir, first apply suction with the empty syringe to remove any remaining lubricant from the reservoir.
7. Repeat the filling procedure from steps 4-5.



Amniotic Fluid/Cephalic Delivery Bleeding

Victoria has the ability to bleed during cephalic delivery. This fluid reservoir can be used to simulate bleeding or amniotic fluid discharge during normal (vertex) delivery; it is located in the left leg. The reservoir maximum capacity is 200 mL.

To set up your Victoria for vaginal bleeding or amniotic fluid discharge during normal delivery, follow the steps below:

1. Locate the blood fill port (white) on the left lower section of the abdominal cavity, labeled as blood.
2. Find the IV filling syringe with filling tube.



3. Prepare simulated blood or amniotic fluid.
4. Fill syringe with the simulated amniotic/blood solution.

Use only Gaumard's provided simulated blood. Any other simulated blood brand may contain sugar or other additives that may cause blockages and interrupt the bleeding system.

5. Connect the syringe with filling tube to the amniotic/blood fill port and inject the fluid into the reservoir.
6. Repeat the filling procedure to transfer up to 200 mL of fluid into the amniotic/blood reservoir.



7. Activate the vaginal bleeding control on the UNI™ software.

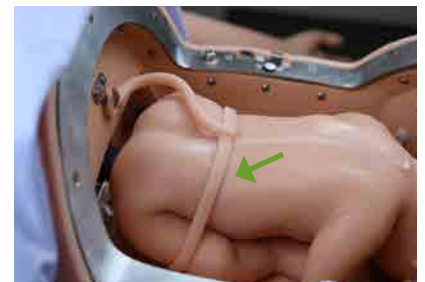
Notice that this bleeding will only be enabled when the baby is connected to the birthing mechanism in normal (vertex) position and the descend percentage is between 40-55% on the labor page.

8. Once the delivery is completed, use the black drain port labeled as "Drain" to drain all remaining fluids with the drain syringe.



Connecting the Birthing Baby

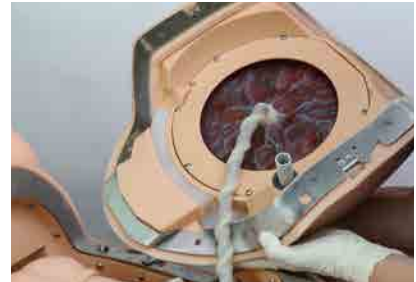
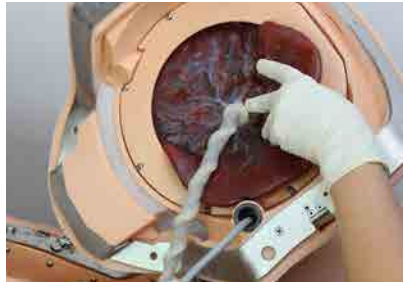
1. Attach the umbilical cord to the baby.
2. Route the cord so it does not bind in the mechanism. Nuchal cord and prolapse of the cord presentations are acceptable preparations for the delivery or scenario being practiced.
3. Place the baby inside the abdominal cavity either face up, for ROP or LOP presentation, or face down if ROA or LOA presentation is desired.
4. Connect the baby delivery ring to the holder.
5. Pass the connector on the birthing arm through the delivery ring.
6. Align the vertex delivery rod on the fetus with the connector on the birthing arm.
7. Connect the fetus to the birthing mechanism.
8. Place the delivery ring into position as shown. Notice that the ring should be placed just below the fetus knee joints.



Contraction Cover

To install the contraction cover:

1. Place the placenta inside the contraction abdominal cover as shown in the pictures.
2. Locate the contraction cover power connector and power port located in the right middle side of the abdominal cavity. Both the connector and the port are marked in green.
3. Connect the power connector to the power port.
4. Hold the cover with both hands.
5. Align the contraction cover with the latches on either side of Victoria's abdominal cavity.



Always place and latch the contraction cover on the birthing cavity prior to starting the labor mechanism. An audible click can be heard when the cover is securely attached

To remove the contraction cover:

1. Use the lower ECG snap connectors as a guide to find the latching mechanism on both sides of the contraction cover.



2. Unlatch the contraction cover from both sides at once.



Do not attempt to remove the contraction cover completely without disconnecting the power connector, doing so will cause internal damage to the simulator.

4. Gently rest the contraction cover to the right side of Victoria and disconnect the power connector from the power port.
5. Remove the contraction cover completely.



Maternal Monitor

To connect a real Fetal Monitor:

1. Connect the transducer wires to the maternal Monitor.

2. Apply ultrasound gel to the Fetal Heart Tone transducer.



3. Place the Fetal Heart Tone transducer slightly below the umbilicus or navel.

4. Place the Contractions transducer (TOCO) slightly above the umbilicus or navel.



5. Secure the transducers with equal tension on both sides of the straps, as with a real patient.


6. Turn on the Fetal Monitor



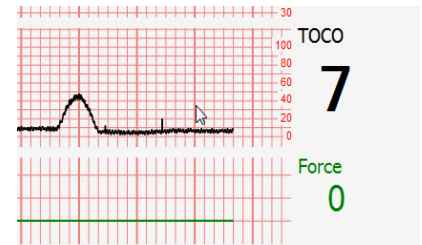
To calibrate the contractions sensor to the real fetal monitor:

1. Place the contraction transducer as instructed above.

2. Use the UA/FHR category in the UNI™ software to set:
 - › Contraction frequency: 2 min
 - › Contraction duration: 40 sec
 - › Contraction intensity: 55 mmHg

STATUS/DETAILS	
	UA FHR
	Cont. Frequency 2 min
	Cont. Duration 40 sec
	Cont. Intensity 55 mmHg

- Wait for the contraction to be relaxed (TOCO: 7-8).
- Click the “Auto Zero” button in the Fetal Monitor.

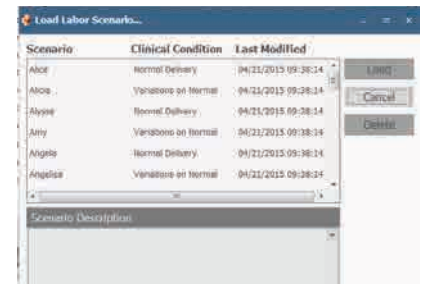


Labor Scenarios

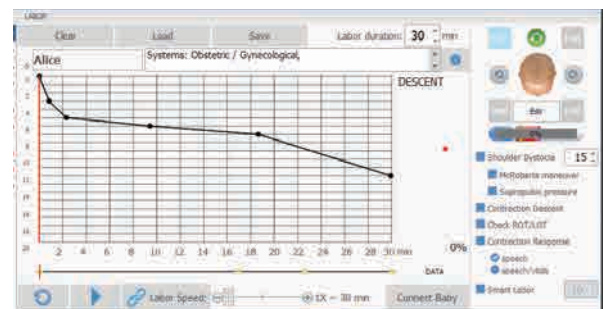
A labor scenario automates the vital signs changes for Victoria and the Fetus that occur during the labor and delivery process. Labor scenarios also control the gradual descent and rotation of the fetus throughout the labor.

The Quick Start Victoria and Victoria Advanced profiles include several preprogrammed labor scenarios.

- To load a Labor Scenario go to the labor tab and click “Load”
- On the Load Labor Scenario window, select the Alice labor scenario, for example, and click Load.

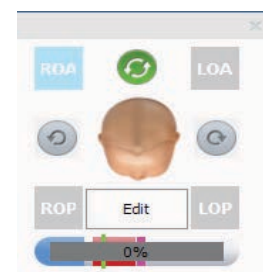


- Alice labor is now loaded



Starting the Labor

- Once the baby is connected and locked onto the mechanism, select the desired initial birthing position.



Select ROA or LOA as the initial position if the baby was attached to the delivery mechanism face down. If the baby was attached face up, ROP or LOP can be selected as initial positions.

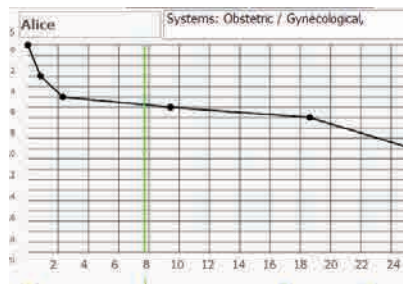
- The labor Speed control permits the scenario to be completed in an accelerated time frame. Users can decide to run the scenario in real time, or at an advanced pace to shorten the scenario run time.



- Click the Play to begin the labor process.



The green vertical bar on the labor graph moves to the right indicating the labor progress. For more information about the labor graph and the labor stations, go to the Labor section.



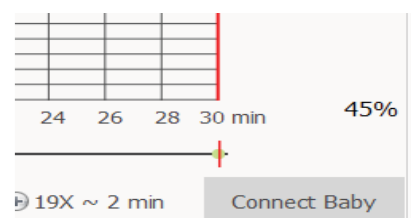
The fetus produces heart sounds during the labor and delivery process. Auscultate the abdomen to assess the fetal heart sounds or use the real fetal monitor to track the fetal heart rate and maternal uterine contractions. Alternatively, enable the fetal heart rate sounds on the virtual monitor screen.

Completing a Delivery

The first few centimeters of movement normally take about half the total delivery time. The baby rotates internally as it moves forward, after the head is delivered and before the shoulders are delivered.

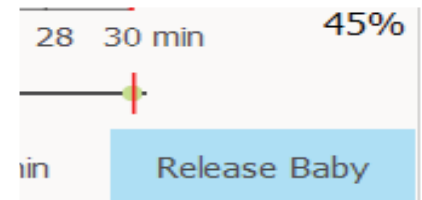


Fetal rotation recreates the natural movement at the time of crowning. Sensors within the Birthing Baby neck and torso report, in real time, the exerted pulling force during delivery and the position of the head relative to the torso.



The provider or facilitator may help the fetal head and shoulders through the vulva just as in real life. The fetus will release automatically when the vertical progress bar reaches the end of the time line on the graphic display. The facilitator has the ability to unlock the baby from the delivery mechanism at any time by clicking the “release” button at the bottom right of the graph.

If the provider misses the automatic release window, click the Release Button to manually disengage the baby.



Fetal Monitor Window

The “Fetal Monitor” window displays feedback data recorded by the force sensors. The “Activity on Fetus” window provides feedback on pull force, uterine contractions, torque on the baby (twisting force), and shoulder position.



Placenta Delivery

During the setup process, the placenta may be positioned so that it requires both modest cord traction and manual removal.

The placenta has two removable placental fragments. These fragments are attached to the body of the placenta with hook and loop fabric. The reversible fragments are easily removed and can be set inside Victoria’s abdominal cavity for bi-manual examination exercises following delivery and inspection of the incomplete placenta.

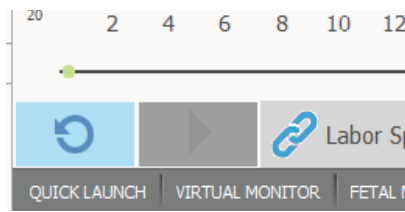


When the delivery is complete the birthing motor will retract about 2 inches automatically, providing enough room for the user to deliver the placenta.

Warning: Ensure that the birthing mechanism is half way retracted before allowing the provider to retrieve the placenta. Do not attempt to retrieve the placenta or placenta fragments while the birthing mechanism is moving.

Resetting the Delivery Mechanism

1. After the placenta delivery is complete, remove the contraction cover as instructed above.
2. Remove the delivery ring.
3. Click the reset button to finish retracting the delivery mechanism to the initial position.



Do not turn off the Victoria until the birthing mechanism has fully retracted to its initial position.

Vacuum-Assisted Delivery

Vacuum-assisted delivery may be practiced with the Victoria simulator using a vacuum cup available from a number of suppliers. Vacuum-assist device attaches to fetal scalp between fontanelles:



Await the next contraction that may be simulated by asking Victoria to bear down, and have the provider apply steady traction perpendicular to the plane of the cup.

Shoulder Dystocia

Victoria may be used to practice the resolution of shoulder dystocia using the McRobert's maneuver, suprapubic pressure, posterior arm sweep, various fetal maneuvers, or elbow-knee delivery.

The birthing mechanism realistically advances and retracts the fetal head (turtle signs) in time with the uterine contractions which are indicative of shoulder dystocia.

Victoria's hip joint permits the completion of the McRobert's maneuver. This maneuver is tracked by the software and is demonstrated to the instructor by means of a 3D graphic on the tablet control PC. The instructor can even set the threshold angle of the hip movement to ensure that providers perform the maneuver properly.



Suprapubic pressure may also release the fetal shoulder.



Elbow-knee delivery may help to release shoulder dystocia. Since Victoria is tetherless the elbow-knee (Gaskin maneuver) position is easily attainable. This is a unique feature of tetherless simulators since there are no cables or wires to impede rolling or turning the patient.



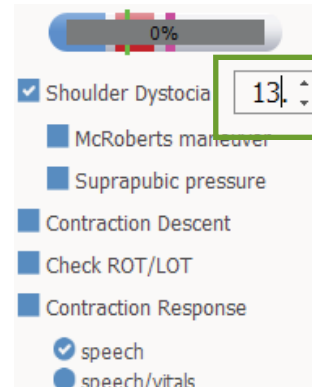
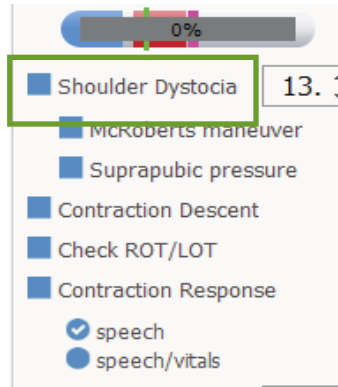
The UNI™ software displays a graphical representation of the applied suprapubic pressure and leg movements.



Also, sensors detect the simulator's supine or Gaskin (hands and knees) position on the birthing bed.

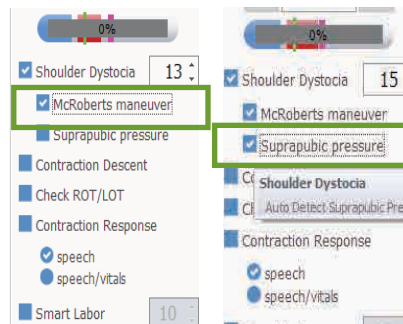
To demonstrate shoulder dystocia:

1. Use UNI™ preprogrammed dystocia labor scenarios (e.g. Cynthia, Candice, and Charlotte). More information about the preprogrammed scenarios can be found in Section 6 of this user guide.
2. Alternatively, activate shoulder dystocia manually by clicking the “Shoulder Dystocia” button on the Labor tab.
3. Select the desired descent level to start the shoulder dystocia.



Once the shoulder dystocia mode is active, the fetal traces will automatically convert to real-time mode, and with each subsequent contraction there will be a “Turtle Sign”. The software will not allow the scenario run time to be reduced or skipped over during a shoulder dystocia emergency drill. The providers must deal with the event in real time.

4. Check “McRoberts maneuver” or “Suprapubic pressure” buttons to deactivate shoulder dystocia automatically when these maneuvers are performed correctly.



Alternately the dystocia mode can be deactivated by clicking again on the “Shoulder Dystocia” button.

Once the dystocia mode is off, the fetal traces and labor speed will adjust to the previous settings, and the labor will result in delivery of the baby.

For more information about shoulder dystocia, refer to the “Labor” section.

Prolapse of the Umbilical Cord

Prolapse of the umbilical cord is a dangerous complication which may clamp the cord cutting off oxygen to the fetus. It involves the presence of the umbilical cord in the birth canal in front of the presenting fetal part. This condition may occur as a result of breech presentation, transverse lies, a small fetus, an overly long cord, a placenta placed low in the uterus, or other abnormalities.

Instructions for Use

To setup Victoria for a cord prolapse complication:

1. Prepare the fetus for a delivery
2. Lubricate the placenta and the umbilical cord
3. Place the umbilical cord between the fetus and the cervix
4. Start a labor scenario

Placenta Previa

Placenta previa is a condition in which the placenta is in the lower half of the uterus, located near to or covering the cervical os.

Victoria is capable of simulating a placenta previa complication at various grades.

Instructions for Use

1. Setup the fetus for a delivery.
2. Lubricate the placenta and the umbilical cord.
3. Place the placenta in the position consistent with the grade of the complication desired for the scenario.
4. Start a labor scenario.

Breech Delivery

Victoria is capable of simulating several types of breech presentations.

Instructions for Use

To simulate breech presentations:

1. Place the baby in the cradle provided.



2. Remove plug in fetal head for breech delivery.



3. Flex the baby's head to reveal its breech port.



4. Insert the breech delivery rod into the breech port. Note that the breech delivery rod is longer than the vertex delivery rod.



5. Lubricate the system as instructed in the "Normal Labor and Delivery" section.
6. Fill the lubrication reservoir as instructed in the "Normal Labor and Delivery" section.

7. Insert the birthing mechanism into the fetal head and place the fetal legs in either an extended position to simulate “footling” delivery or retract the legs for a “frank” delivery.



Notice that the delivery ring is not needed for breech delivery.

8. Load or program a breech delivery scenario.
9. Place the contraction cover into position as instructed in the “Normal Labor and Delivery” section.
10. Start the labor scenario

Cesarean Delivery

For Cesarean deliveries, Victoria features a removable abdominal cover that snaps onto Victoria’s abdomen. It includes a disposable surgical insert with appropriate layers for dissection and suturing exercises.

The disposable surgical insert includes the anatomic layers seen in real patients such as: skin, subcutaneous tissue, fascia, muscle, and peritoneum.

The fascia is designed so that a Pfannenstiel incision can be performed. The rectus abdominis muscle can be separated to see the peritoneum in the operative field. Cesarean abdominal inserts have simulated blood incorporated into the subcutaneous layer

C-Section Cover (revision C)

Victoria has the C-section cover and inserts (revision C) from serial number V1605264

This package includes:

- 1 C-Section abdominal cover
- 2 C-section inserts
- 2 C-Section uterine layers
- 1 C-section baby head assembly
- 1 C-section baby breech

Instructions for Use

To set up Victoria for a Cesarean section delivery:

1. Prepare Victoria for delivery.
2. After it has been determined that a Cesarean section is required, select a Cesarean section labor scenario.
3. Remove the contraction cover. Refer to the “Normal Labor and Delivery” section

4. Release the Birthing Baby from the motor arm and reset the birthing mechanism.

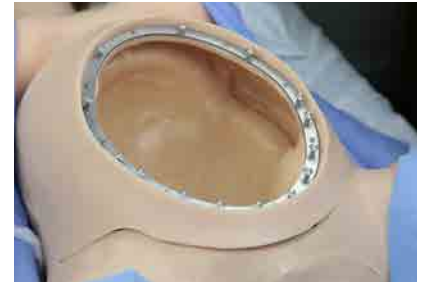


5. Attach a baby head or breech assembly to the end of the abdominal cover to perform the Zavanelli maneuver



6. Place the Cesarean section abdominal cover onto the abdominal cavity. Hold the cover with both hands

7. Align and latch the Cesarean section cover in the Victoria abdominal cavity.



8. Lubricate the Cesarean section baby and placenta as instructed for the Birthing Baby.



It is not recommended to add any fluids in the Cesarean section cover.

9. Place the cesarean baby and placenta inside the abdominal cavity.



10. Align the uterine layer and pull the holes over the metal snaps



11. Verify that the uterine layer is secured



12. Apply mineral oil to the holes of the surgical insert to reduce friction



13. Fit the surgical insert into the metal snaps



14. Follow the insert until all the holes snap in place



15. Apply mineral oil to the surface of the abdominal insert to reduce friction during the surgical incision.



16. Begin the Cesarean section surgical exercise.



4.10 Postpartum Activity

Postpartum Hemorrhage

Victoria can hemorrhage simulated blood from the uterus and birth canal. In addition, the uterine pressure can be adjusted using the software controls to change the firmness of the fundus.



The postpartum cover includes an integrated palpable uterus, a perineum, urinary reservoir and blood reservoir for software controlled, variable rate, uterine and vaginal bleeding.

Filling the reservoirs

Feature	Fluid Capacity (mL)
PPH reservoir	1000 mL
Urinary reservoir	200 mL

To fill the PPH reservoir follow these instructions:

1. Locate the blood fill port (white) on the back plate of the postpartum cover, marked in green.
2. Find the PPH syringe with filling tube.
3. In a separate container, mix a solution of Gaumard simulated blood colorant and water.
4. Fill the syringe with the simulated blood solution.



Use only Gaumard's provided simulated blood. Any other simulated blood brand containing sugar or any additive may cause blockage and/or interruption of the PPH system.

5. Connect the syringe with filling tube to the PPH fill port and inject the fluid into the reservoir.
6. Repeat the filling procedure to transfer up to 1L of fluid into the Hemorrhage reservoir.



To fill the urinary reservoir follow these instructions:

1. Locate the urinary fill port (white) on the postpartum cover, marked in green.
2. Locate the urinary bladder fill kit and connect the syringe with the filling tube to the white port.



2. Locate the urinary bladder fill kit and connect the syringe with the filling tube to the white port.

3. Fill the bladder with fluid up to 200 ml.



Replacing the birth canal and the cervix

1. Drain the lubrication and blood reservoirs.
2. Disconnect the urethral extension from the urinary fill port.



3. Disconnect the cervix from the flanges located on both sides of the upper pelvic cavity as shown in the picture.



4. Remove the cervix completely. The urethral extension, attached to the birth canal, passes through an opening in the cervix wall.



5. To detach the birth canal, gently move the 6 snaps counterclockwise to disconnect them from the metal frame.



6. Disconnect the green bleeding hose located on Victoria's left side.



7. Disconnect the clear lubrication hose located on Victoria's right side.

The birth canal is now disconnected.



8. Locate the division on the white frame of the birth canal and use it to pull the birth canal out into the abdominal cavity.

To install a new birth canal and cervix, reverse the instructions.



Postpartum system assembly

The postpartum system includes the postpartum cover and the perineum. This system needs to be assembled prior to installing it in Victoria's abdominal cavity.

1. Verify that the urinary and PPH reservoirs are filled before inserting assembly into Victoria.



2. Attach the perineum to the postpartum cover by closing all three latches. This procedure requires some force, so it is suggested that a second party assist with this step.



3. Connect the suppository sensor cable.



4. Connect the hose with white connector to the corresponding port on the right side of the PPH unit.



The perineum is interchangeable with the 4th degree episiotomy repair insert.



5. Interchange the modules as needed. For more information about episiotomy repair refer to the next section.



6. Hold the postpartum system with both hands.
7. Insert the perineum as shown in the picture.



8. Connect the postpartum power connector to the power port.



9. Align and set the Postpartum cover into place.

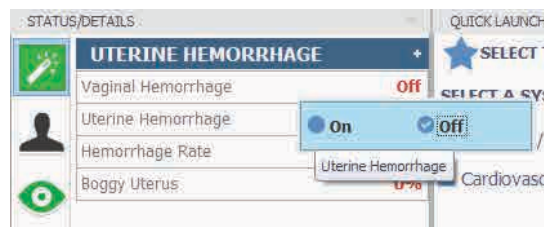


10. Attach the perineum by connecting the white snaps to the metal frame.



Instructions for Use

1. To enable vaginal and/or uterine bleeding and start blood flow, set the vaginal bleeding and/or uterine hemorrhage controls to “ON” and click NOW from the Apply menu. The hemorrhaging fluid will bleed from the uterus and/or the vagina.
2. To stop the hemorrhage, set both hemorrhage controls to “Off” and click NOW from the Apply menu.



Use the Uterine Pressure control to adjust the firmness of the uterus. Decreasing the Uterine pressure makes the uterus firmer.

Uterine pressure maximum value is 100% equivalent to 40mmHg.



Practice fundal massage or insertion and inflation of a balloon tamponade device to stop the bleeding.



After a Postpartum Scenario

Decrease the Uterine Pressure to **0%** and perform fundal massages to relieve the pressure. Then, power down the manikin.

Episiotomy Repair

Victoria includes three replaceable episiotomy modules which feature a midline episiotomy with peri-urethral tears, a mediolateral episiotomy with tears to the labia minora and a multi-layer fourth degree episiotomy with hemorrhaging vaginal sidewall tears and cervical lacerations. These modules allow multiple surgical repairs using real surgical instruments.

Instructions for Use

1. Replace the birth canal with the regular episiotomy repair modules. For instructions, refer to the replacing the birth canal section above.
2. Install the 4th degree episiotomy with the postpartum cover as instructed above.
3. Apply mineral oil to the surface of the insert to prevent friction between the material and the surgical tool.
4. Use a “000” size suture and small curved needle to suture the laceration.



Rectal Suppository

Victoria contains a rectal suppository receptacle with automatic electronic recognition. This feature is located on the perineum of the postpartum system.

Instructions for Use

1. Apply mineral oil to suppository.



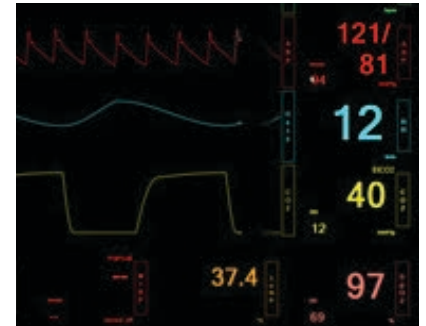
2. Insert the suppository in the rectum



4.11 Other

Vital Signs Monitor

The virtual vital signs monitor simulates a vital signs monitor attached to the simulated patient. The vital signs are synchronized through a wireless network between the facilitator's tablet and the computer running the monitor. You can customize each trace independently; users can set alarms, time scales, boundaries and grid options. For more information, refer to the UNI™ digital user guide.



Streaming Audio

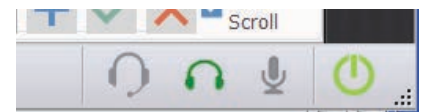
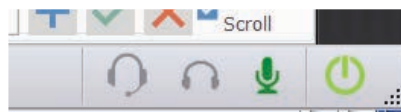
Use the wireless streaming audio system to speak as the simulator's voice and engage the provider in a realistic conversation.

Instructions for Use

1. Connect the headset and microphone to the PC before starting the UNI™ software. The headset minimizes echo and environmental noise to improve audio quality.



2. Click the “talk” icon and speak into the headset to talk as the simulator's voice. To listen to the provider's response, click the headset.



3. Click the headset and microphone icon to listen and talk simultaneously



5. Working with UNI™

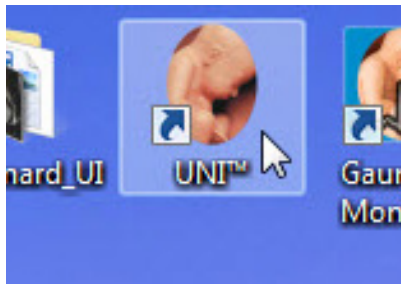
5.1 Getting Started

Initiating the Simulator

After reading the manufacturer's care and caution information, press the power button to turn on the Tablet PC.



The UNI™ software initializes the simulator. Double click the UNI™ icon on the tablet's home screen to start.



The simulator selection menu is shown. Select Victoria and click "Start".

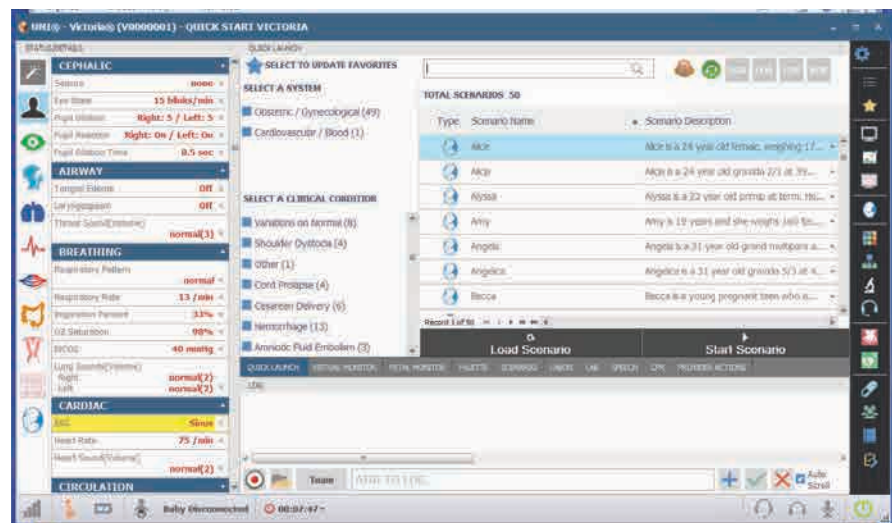


The wireless link between UNI™ and the simulator is established within 1 minute.

The available profiles for each simulator will be displayed when the simulator is selected. For more information about managing and creating new profiles, refer to the "UNI digital User Guide".

The UNI™ software is used to control the simulator, monitor the vital signs, and evaluate the provider's performance. The simulation technician or instructor carrying out the simulation operates the UNI™ software.

The UNI™ control elements and scenario programming procedures are consistent throughout the Gaumard family of high fidelity simulators. Some software controls and features covered in this guide may be hidden depending on the simulator's hardware configuration and optional upgrade.



Connection Status

The communication indicator displays the status of the radio link between the tablet's USB RF module and the simulator. Full bars indicate excellent communication (i.e. normal operation).

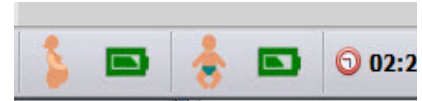
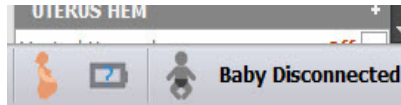


Victoria and Birthing Baby Battery Indicators

There are two battery indicators on the lower left corner of the UNI™ software. The first one is for Victoria and the second one is for the Birthing Baby.

The interrogation mark for Victoria's indicator is shown when there is no communication and battery information cannot be retrieved. The "Baby Disconnected" message is shown on the baby's indicator when he is not connected.

The battery status indicator progresses as the battery in the simulator is used.



When the battery icon is depleted, the simulator is set to STAND-BY mode automatically to protect some of the simulator's internal components. Simulator will not initialize until connected to the charger or the battery is replaced with a fully charged spare. If the Birthing Baby battery indicator shows "Baby Disconnected", it means the baby's battery is uncharged and the baby got disconnected.



Before the baby gets disconnected due to uncharged battery, a message pops up on the screen.

Internal battery duration is approximately 10 hours for Victoria and the Birthing Baby depending on the use.

Session Clock

The session timer allows the facilitator to maintain a chronological record of individual simulation sessions. The session timer can be reset from the file menu when a new simulation session begins, or by clicking the session time icon and then Reset Session Clock. Events during the simulation are logged in accordance to the session time.



Power/Stand-by Button

The standby button is located on the bottom right corner of the UNI™ software. Use the stand-by feature to conserve battery during lectures.



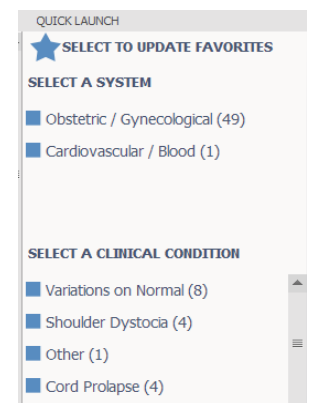
Quick Launch

The UNI interface opens up showing the quick launch page for the scenarios. This page is used to easily access the preprogrammed scenarios saved on each profile.



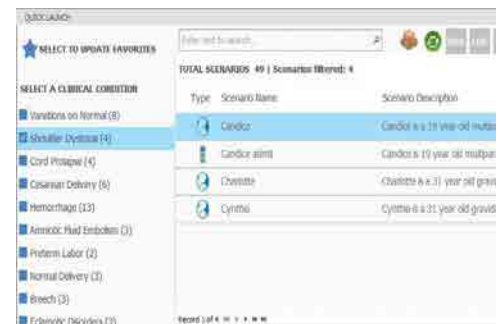
Clinical Condition

The scenarios are categorized by clinical condition to the left of this page; i.e. shoulder dystocia, cord prolapse, etc.



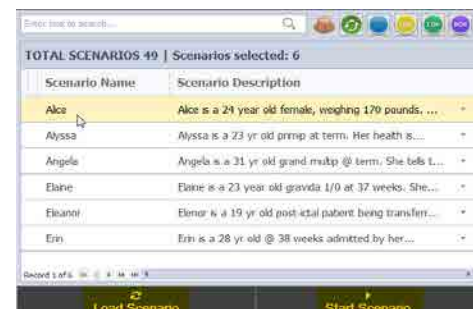
Select the scenario type as show below.

Notice that one or more scenario types can be selected at the time and the list of scenarios on the right will display only the scenarios included on the selected categories.




Selecting the Scenario

1. Click on one of the scenarios listed to highlight it and the scenario can be started immediately or loaded.



- Click on the drop down arrow to the right to read a scenario description.

TOTAL SCENARIOS 49 Scenarios selected: 6	
Scenario Name	Scenario Description
Gabriela Cesarian	19 year old Mexican girl has a vertical abdominal scar. 
Gail	19 year old Mexican girl has a vertical abdominal scar indicative of previous c-section. She says she has a child who is with her mother in Mexico city. She is having painful caontractions and suddenly becomes pale and diaphoretic while screaming and clutching her abdomen. Her BP drops to 80/60 and the fetus begins to brady down to 80 bpm. This is a
Haley	
Kimberly c_s	
Franché	
Irene	

Clicking “Start Scenario” loads the appropriate scenario and starts it playing without the user having to do anything else with the control computer.

Notice that the position of the fetus should be selected before to click “Start scenario’ as shown below.



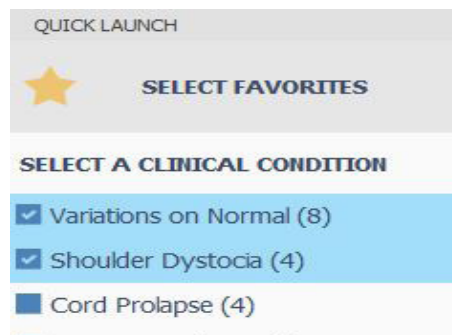
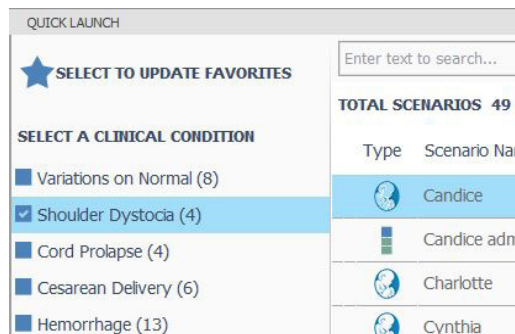
Preparing the actual simulator for delivery must be done before activating quick launch scenarios. For complete information refer to the “Working with Simulator” section.

Favorites

There is also a “Favorites” feature added to the quick launch program.

This feature allows users to reduce the number of scenarios highlighted to those within the categories that will be used most frequently.

Enable the “Favorites” feature by clicking the start icon. Then select the categories or scenario types to be stored under this feature.

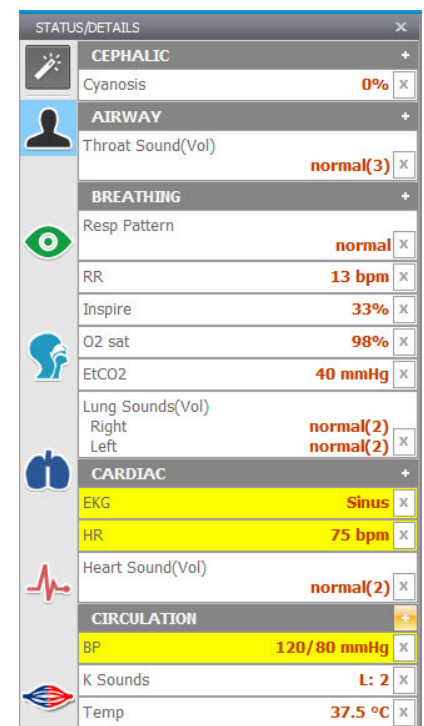


The Status/Details panel is used to monitor and control the simulator's vital signs. The individual parameter controls displayed on the details tab provide the simplest method for controlling the simulator's vital signs, sounds, and features.

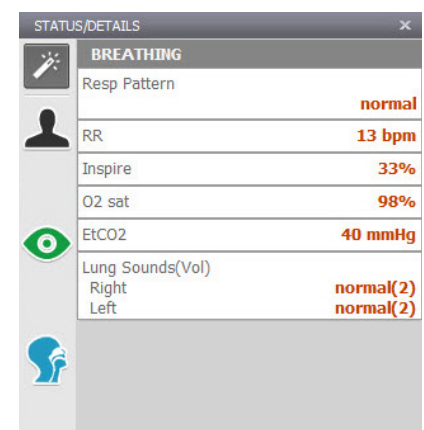
The Status/Details tab displays the vital signs controls in a list format.

Systems List View

The vital signs controls are divided into separate categories.



Click through the categories to view the controls available for the current simulator configuration.



Changing Vital Signs

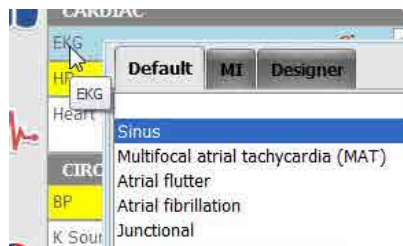
To adjust numerical values click and drag the slider control. (e.g. heart rate, blood pressure, respiratory rate, etc.).



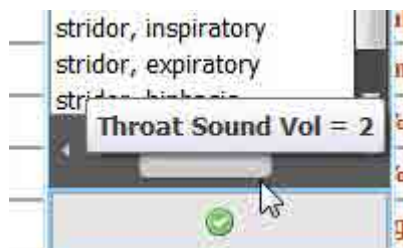
Alternatively, use the keyboard for manual entry and click the green checkmark to confirm the change.



To change patterns, sounds, and rhythms, click on the specific control to display the library (e.g. EKG rhythms, heart and lung sounds, respiratory patterns, etc.)



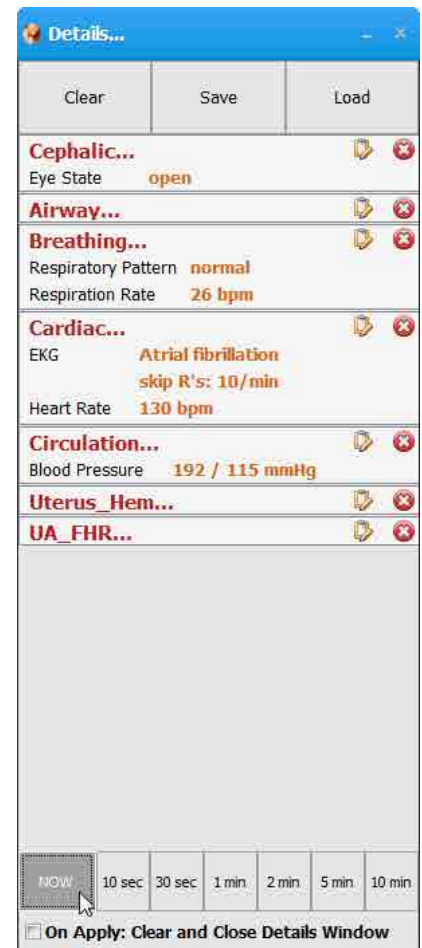
Click the slider control below the sound library to adjust the volume of the sounds.



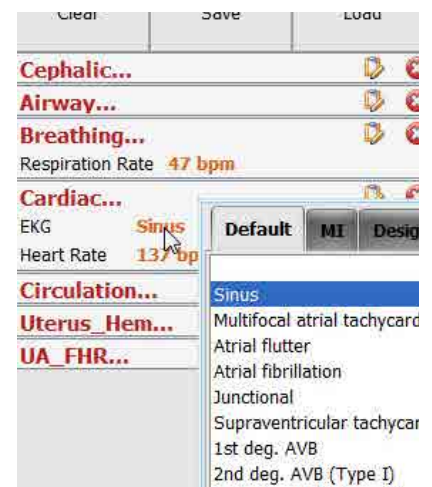
Applying Changes

No changes will be made to the simulator's condition until the new settings are submitted using the "Apply" panel.

After the list of changes is created, click NOW to update the vital signs instantly. Alternatively, click a trending time to update numerical vital sign parameters (e.g. heart rate, blood pressure) gradually.

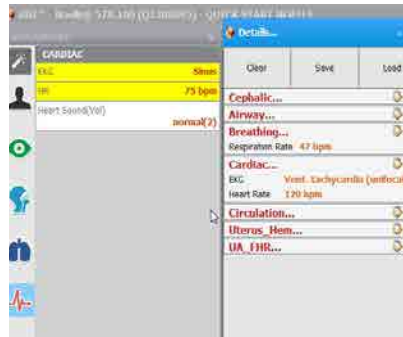


Vital signs can be edited by clicking on the specific parameter.

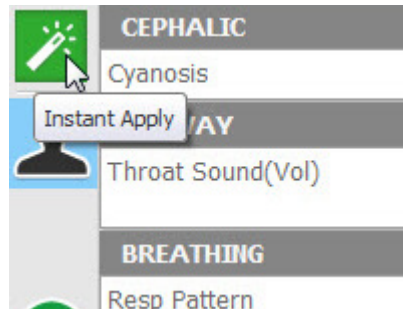


Also, use the edit and remove tabs to edit a new parameter or remove an existing one.

Notice that until the “Apply” option is not selected, the vital signs in the Status/Details panel will not reflect the new changes.



Enable the “Instant Apply” option and click the control to change the vital sign to a new value without the need to use “Apply” panel. Vital signs undergoing change blink yellow.

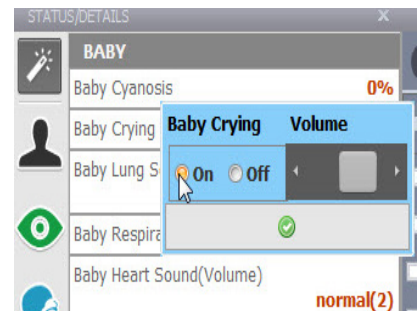
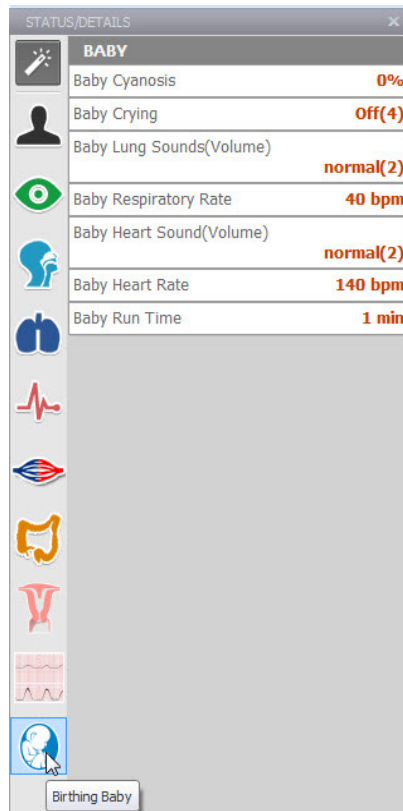


Birthing Baby

This control panel permits the instructor to predetermine the vital signs of the baby at the moment of birth. Vital parameters can be programmed to run anywhere from 1 to 5 minutes following delivery. The vital signs must be programmed while the baby is still connected to Victoria and they cannot be altered after the delivery.

The baby will display the preprogrammed vitals about 10 seconds after being separated from the mother. If crying is selected it will last for the first minute following delivery only. Heart and lung sounds can be auscultated up to 5 minutes after delivery.

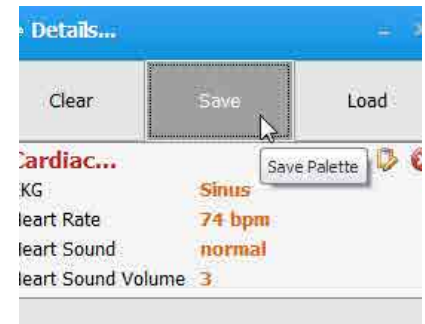
If heart and lung sounds are selected with no crying, the sounds will play immediately after delivery.



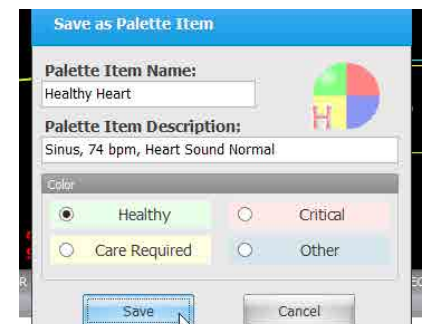
Creating Palette Items

A palette item stores one or more vital sign settings into a single loadable object. Use a palette item to update a set of vital signs quickly. For example, one palette item can be created to update all the cardiac parameters to a healthy state.

To create a new palette item, set the values for the desired vital signs parameters using the details controls and click “Save”.



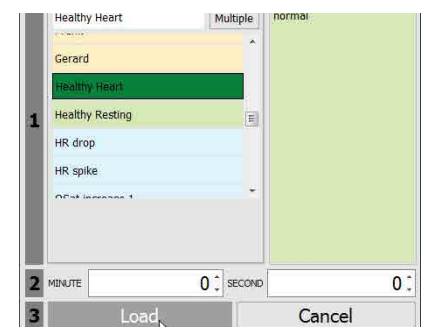
Enter a name for the palette, a description, and choose a color code. Click “Save” to create the new palette item. Palette items are stored in the active profile.



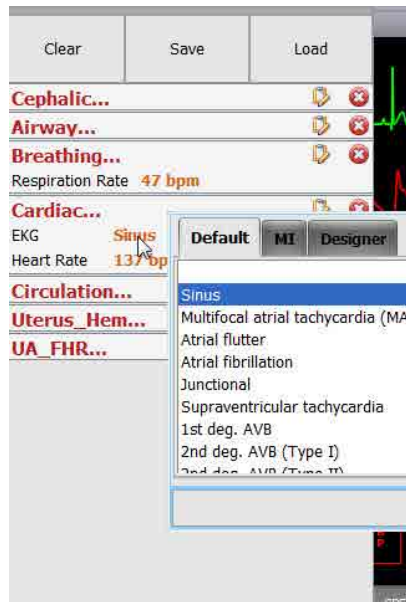
When the palette is needed, click the “Load” button to select the palette from the library.



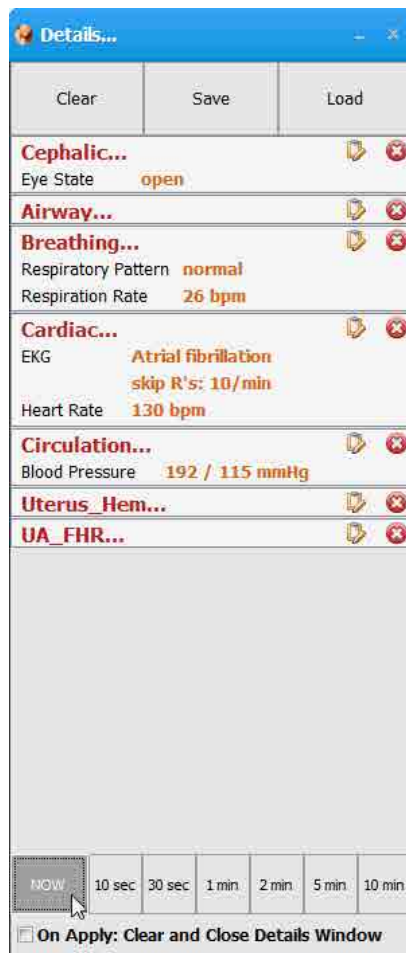
Select the palette item from the “Load Palette Item” menu and click “Load”.



Make changes by clicking on the specific parameter.



Click the apply option to submit the changes.

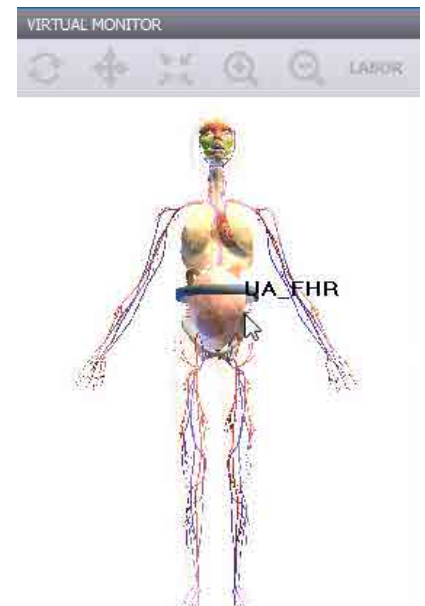


Body View

The “Body View” mode displays an interactive model of the simulator. The model is a representation of the simulator and its internal organs.

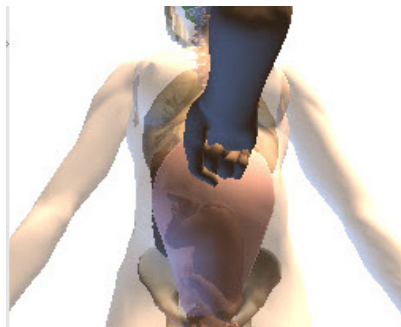


Use the Body View controls on the top to rotate, move, re-center, zoom the model. Place the cursor over the body to view the model's internal organs. Also, reach the desired category in the list view clicking over the body view.



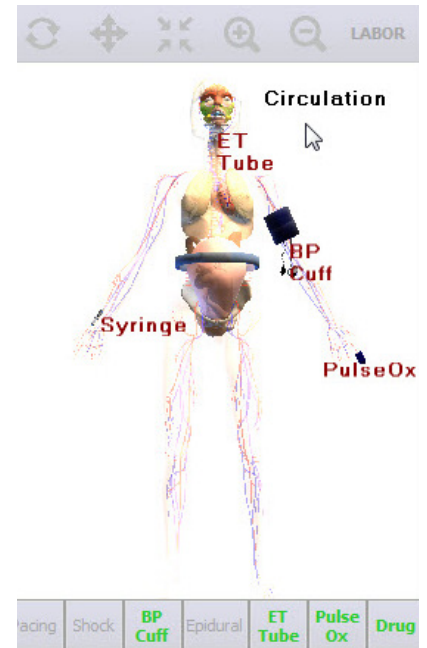
Labor 3D View

- Live 3D visual feedback for the instructor as the fetus progresses through the delivery.
- View internal rotations of the fetus.
- Real time graphical display of the pulling force applied to the fetus during labor.
- Real time graphical display of the applied suprapubic pressure.
- Real time graphical display of Victoria's leg movement.
- Real time graphical display of baby's position. Delivery baby fitted with position sensors along the spinal cord to provide real time feedback of provider maneuvers.
- Sensors on the birthing baby's hip report up/down and sideways movement during a breech delivery.
- Sensors on the Birthing Baby's neck and torso report, in real time, the exerted pulling force during delivery and position of the head relative to the torso.
- See and record the delivery in real time for debriefing purposes.



Sensor Panel

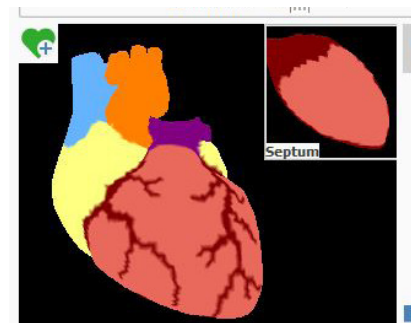
The body view includes the sensor panel, which detects the action performed and shows active sensors highlighted in green.



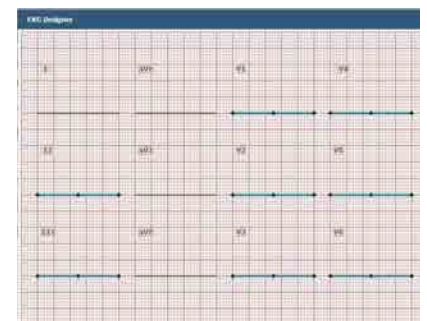
Myocardial Infarction Editor and EKG Designer

From serial numbers V1803569 and up, the Victoria will be supplied with a myocardial infarction editor and a custom EKG Designer.

The MI editor can be used to create custom infarctions in a model heart. Create different occlusions such as, ischemia, injury, and necrosis. The infarction can be detected using a real EKG monitor.



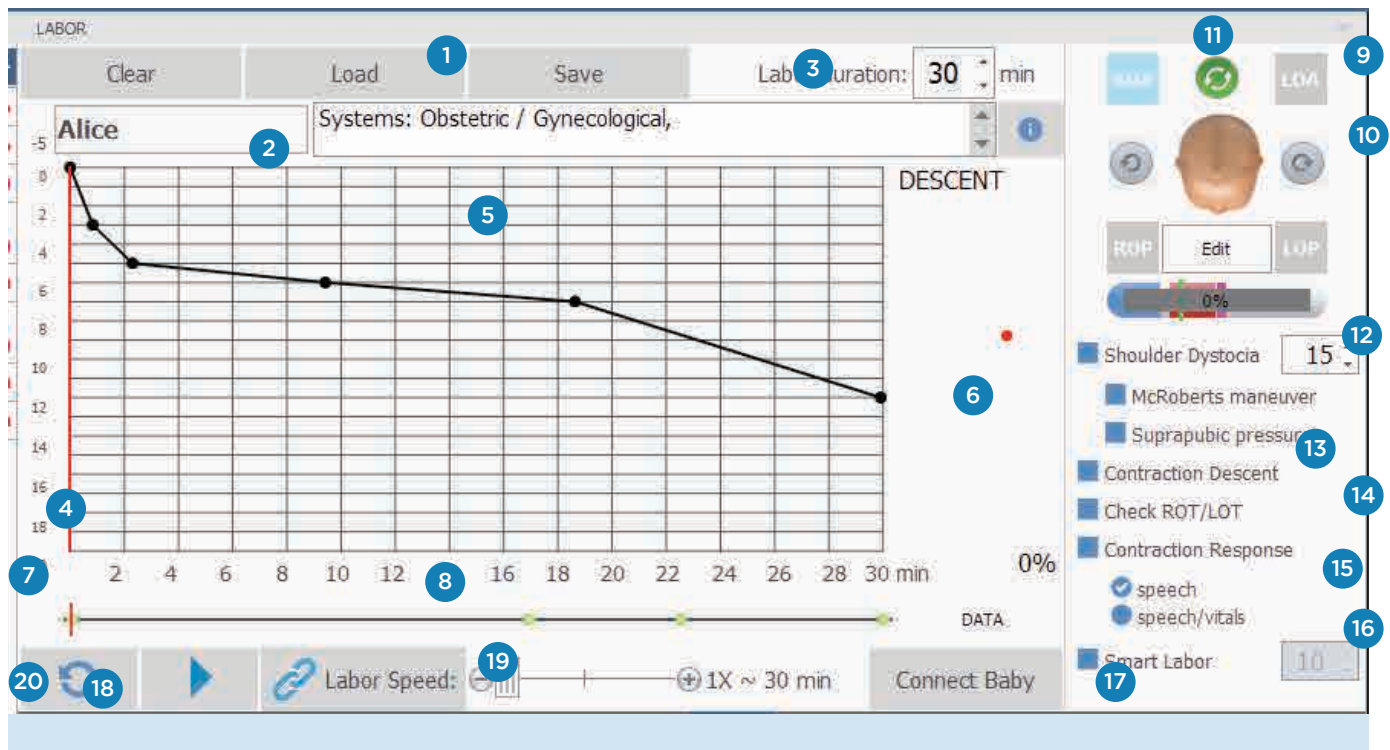
Create custom 12 lead rhythms using the EKG designer. Edit existing rhythms in the designer as well.



Refer to the Myocardial Infarction Editor section in the UNI User Guide for more information.

5.3 Labor

The Labor tab is used to program, play, and monitor a labor and delivery scenario. Reference this section to learn more about the programmable features available on the Labor tab. To carry out a labor and delivery simulation exercise, please reference the “Working with Victoria” directions for use section.

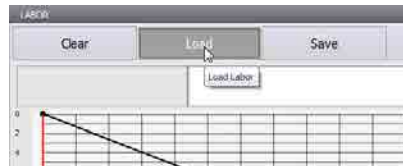


1. **Load/Save Labor** - Click “Load” to select from the preprogrammed labor scenarios
2. **Labor Scenario Information** - Displays the patient name/scenario name and the patient history
3. **Labor Duration** - The simulated duration of the delivery; from stage one to stage three
4. **Labor Progress Line** - The vertical line moves to the right indicating the progress of the labor scenario
5. **Descent Curve** - The programmable descent rate of the fetal head relative to the ischial spine

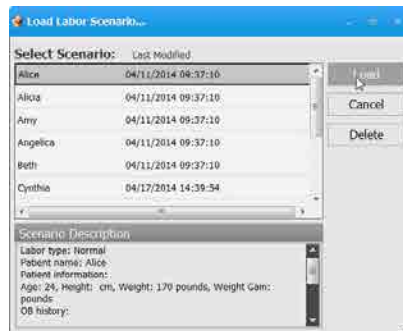
6. **Descent Station** - The position or level of the fetal head relative to the ischial spines
7. **Palette Time Line** - Holds palette items with respect to when they occur during the delivery
8. **Palette Item** - A preprogrammed set of vital signs parameters or speech
9. **Initial Fetal Position** - Select the fetus position (ROA, LOA, ROP, LOP) to select the position of the fetus inside the abdomen
10. **Remote Positioning Controls** - Click the turn controls to rotate the fetus inside the abdomen
11. **Disable Rotation** - Turn off the fetus internal and external rotation automatically
12. **Shoulder Dystocia** - Turn the dystocia feature on or off and set the station when turtle signs begin
13. **Check ROT/LOT Delivery** - Verifies the fetal shoulders are positioned ROT/LOT before disengaging automatically
14. **Contraction Descent** - Advance the delivery mechanism only during contractions
15. **Contraction Response** - Generate speech responses with every contraction
16. **Smart Labor** - Run labor palette items for the time specified regardless of the speed increase
17. **Manual Release** - Click the release button to disengage the baby from the motor arm
18. **Play/Pause** - Click to start the scenario and activate delivery mechanism
19. **Labor Speed** - Adjust the labor speed to simulate the labor scenario in a fraction of the time. For example, increase the speed to complete a 30-minute labor scenario in 2 minutes
20. **Reset** - Reset the motor back to the starting position following the delivery

Labor Scenarios

Preprogrammed labor scenarios are included in the “Quick Start Victoria” and “Victoria Advanced” profiles. To load a labor scenario, go to the labor tab and click the “Load Labor” button.



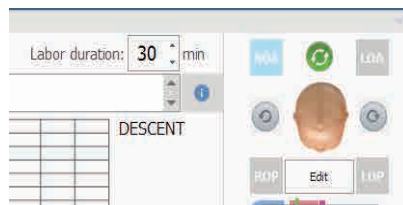
The “Load Labor Scenario...” menu is displayed. Scroll through the list of labor scenarios available. Every preprogrammed scenario includes a scenario description. Select a labor scenario and click “Load” to continue.



Labor Duration

The labor duration refers to the simulated duration of the labor scenario from beginning to end.

The approximate duration of the labor in real time is displayed near the labor speed slider.



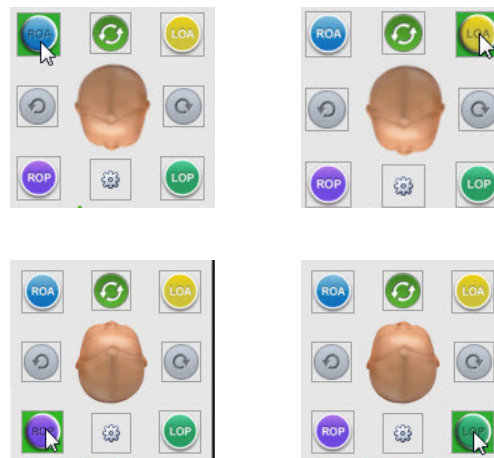
The system can complete a lengthy labor scenario in a fraction of the time. Use the slider to increase the labor progression speed. In this example, the entire 30-minute labor scenario will be completed in approximately 2 minutes.



Initial Position Synchronization

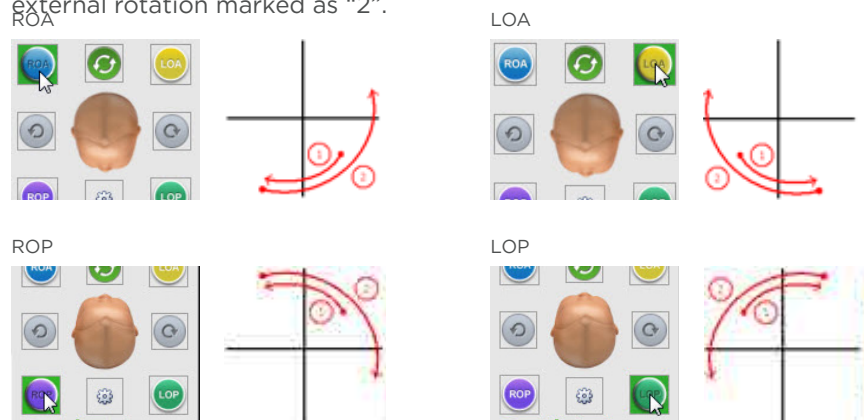
The birthing mechanism simulates internal and external rotations from any of four initial positions: ROA, LOA, LOP and ROP. Each of the position's rotation routine is preprogrammed to result in the vertical delivery of the fetal shoulders (ROT/LOT) while the fetal head is delivered either face down or face up.

Select the initial position option on the Labor tab. See the figure below for an example of the four initial positions with the matching option selected on the Labor tab.



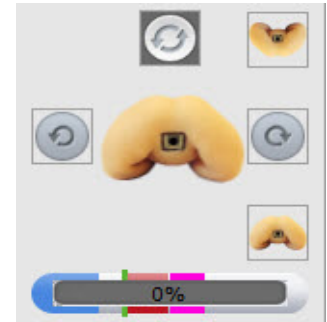
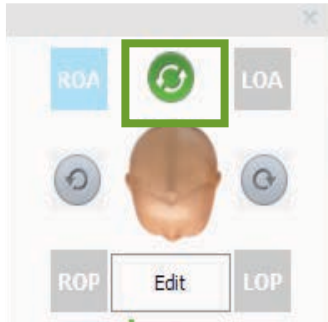
Internal and External Rotations

Each initial position is preprogrammed with an internal rotation and the external rotation routine. See an example of the direction of each rotation in the figure below. The red curves illustrate the rotation of the fetus within the abdomen. The internal rotation is marked as "1" and the external rotation marked as "2".



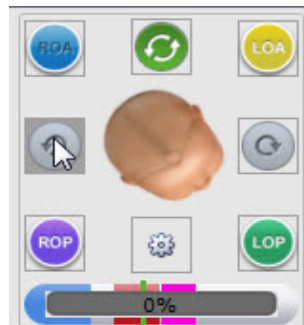
Disable Rotation

The “disable rotation” option turns off the fetal rotation. The fetus can still be rotated remotely using the rotation controls.



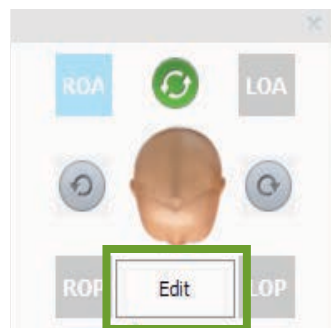
Remote Positioning Controls

Click the turn controls to rotate the fetus inside the abdomen as shown in the picture.

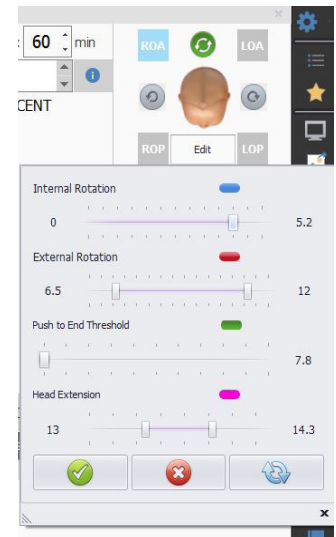


Editing Rotations

The start and end of each rotation routine can be customized to simulate a specific rotation behavior. Click the “Edit” button to view and edit the rotation configuration for each initial position.



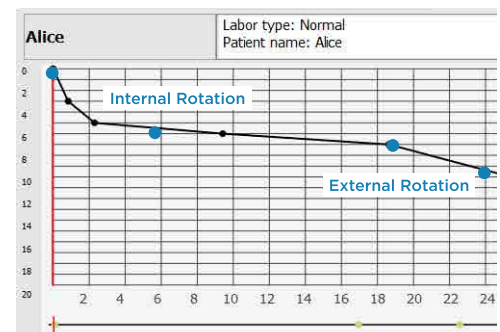
The start and end of each rotation routine is configured using the “Station” menu. On the figure to the right, the **internal rotation** is programmed to start when the progress line intersects the descent curve at initial station 0 and to end at +5.2; use the slider to change to end of the internal rotation. The **external rotation** is programmed to occur later in the descent starting at station +7.8 and ending at +13; use the slider to change the start and end of the external rotation.



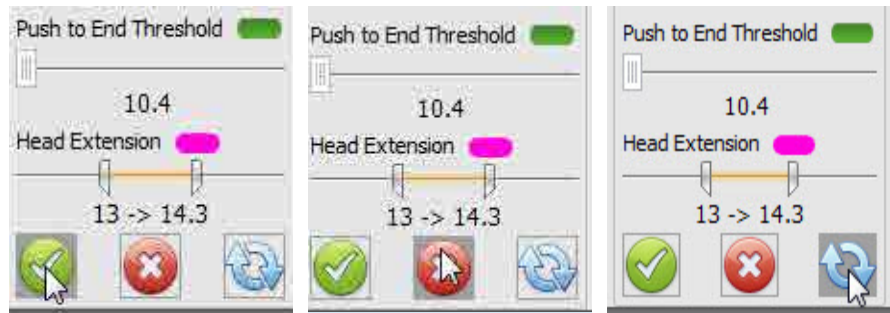
The **push to end threshold** is a marker that is used to tell the program whether or not to automatically deliver the fetus. When the green labor progress bar reaches the end of the timeline, the software checks to see if the push to end threshold has been reached; if so the baby is delivered. If the threshold marker has not been reached the user is prompted by the software: “do you wish to deliver fetus yes or no?”

The **head extension** range is a control that dictates where the baby’s head makes an upward movement in relation to the maternal perineum. The automated head extension can only occur when either LOA or ROA is selected as the initial fetal presentation position.

Edit the rotation values to customize where the rotations will occur during the descent. The software will not allow the rotations to overlap. The station settings apply to all the labor scenarios. In the figure below, the internal and external rotation station settings are applied to the “Alice” scenario.

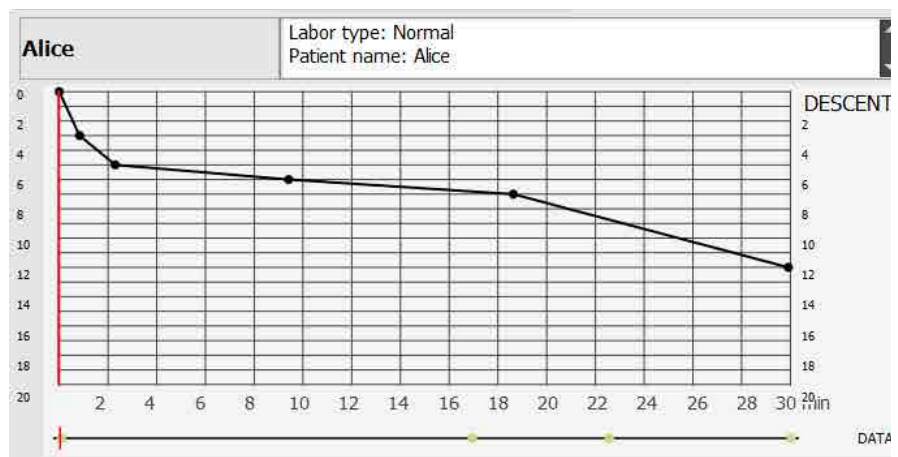


There are configurable presets for all four initial positions. Click the “Apply” button to save the changes. Customized values remain saved even after a software restart. Click cancel to abort the changes selected. Click “Reset” to return all Stations and rotation degrees to factory defaults.



Labor Graph

The labor graph displays the information required to monitor the movement of the fetus during delivery. The graph is also interactive.

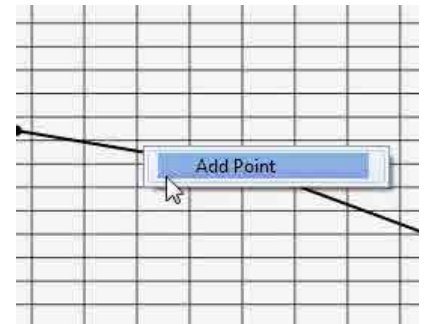


Descent Station

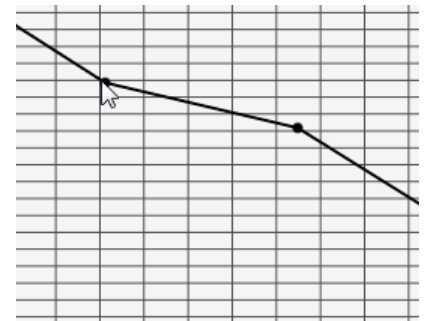
The numerical values on the vertical axis represent the labor station. These measurements are an approximation.

Descent Curve

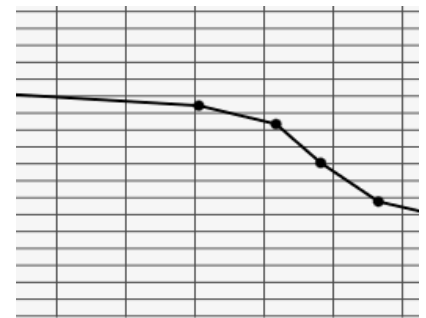
The descent curve represents the position of the fetal head relative to the ischial spines in centimeters. “Right-click” on the line and add a point where the descent rate should change.



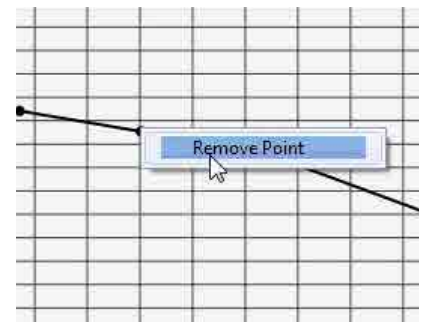
Tap and hold the point and move it to adjust the descent curve.



Add more points on the line to simulate variations in the descent rate.

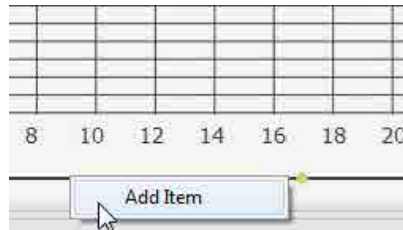


To delete a point from the line, right-click over the point and select “remove point”.



Palette Time Line

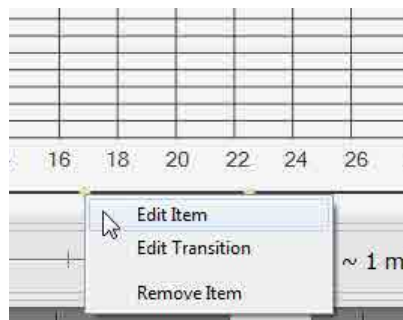
The time line is where Palette Items are placed to change the patient's vital signs during the scenario. As the progression line moves to the right, it loads each palette item that it passes over. To add a palette item to the time line, right-click on the time line and select "Add Palette".



The add palette item window is displayed. Select a palette item to change the patient's vital signs, a preprogrammed speech item, or a file. Set the transition time and then click "Add".



Once the point has been added, you can touch it with the stylus and drag it to the desired location on the time line. Double-click over the point to bring up a window displaying the properties of the Palette Item represented by the point.



To remove or edit a palette item from the time line, right click over the point and select the desired option.

Labor Controls

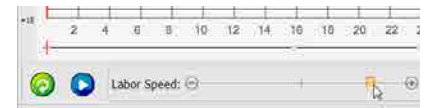
Use the labor controls to run, pause, speed up, and reset the labor scenario.



The “Play” button starts the labor scenario and initializes the delivery mechanism. The play button is also used to pause the scenario. Reference the “Working with Victoria” section for step-by-step walkthrough on how to complete a labor scenario.

Do not start the labor scenario until reading “Working with Victoria” and the “Care and Cautions” sections of this guide. Damage caused by improper use is not covered under warranty.

Use the Labor Speed slider to adjust the labor speed without affecting the simulated labor duration. For example, increase the speed to complete the simulation of a 30-minute labor in 2 minutes real time.

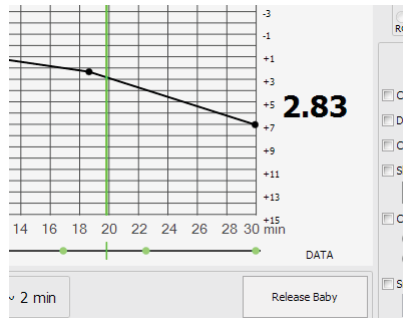


The “Reset” button returns the delivery mechanism to the starting position after the delivery is completed.

Do not reset the delivery mechanism while the fetus is still attached to the motor arm. Retracting the fetus into the birth canal may result in damage to the birth canal and the fetus.

Progression Line

The vertical progress line moves to the right when the labor scenario is started. The progress line intersects the descent curve and the time line. Palette items placed on the time line are triggered when the progress line passes over them.



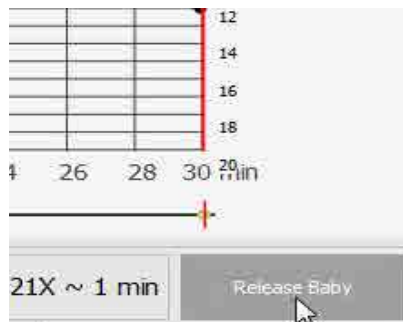
5.4 Locking Mechanism and Release

The birthing mechanism arm attaches and locks into the fetus attachment port. The motor arm low voltage cable feeds power to the locking mechanism and fetal heart tones speaker inside the fetus. There is one actuation of the locking mechanism when the articulating baby is inserted.

The fetus is unlocked from the birthing mechanism when the vertical progress bar reaches the end of the graph. The automatic unlock process is indicated by the “Releasing...” status on the software.



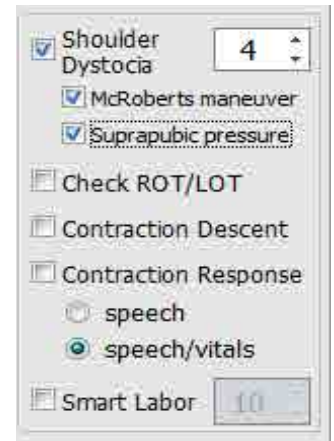
The fetus will not be unlocked automatically if the “Shoulder Dystocia” feature is activated. If the Shoulder dystocia feature is active, click the “Release baby” button to disengage the fetus manually.



The locking mechanism features an automatic safety release to prevent users from damaging the system. Go to the appendix to troubleshoot issues related to the unlocking and releasing process.

5.5 Additional Labor Features

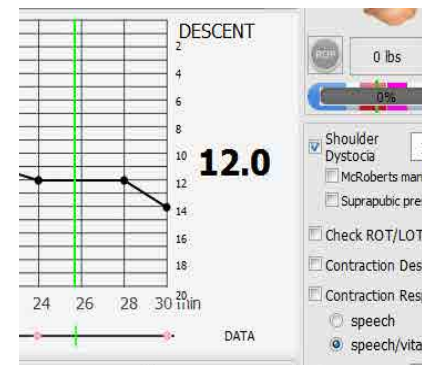
The additional behavior options add realism to the labor scenario.



Shoulder Dystocia

Enable the shoulder dystocia feature to display the retraction of the fetal head during the delivery. Turtle signs are displayed with every contraction that occurs after the progress line passes the predetermined onset of shoulder dystocia point. The shoulder dystocia activities occur in real time regardless of the speed increase setting.

In the Cynthia labor scenario, the shoulder dystocia is programmed to start at the 12cm mark. There will be a turtle sign with every contraction after this point. If shoulder dystocia is not relieved the turtle signs will continue with each contraction until the end of the scenario at T=30 on the time line. Recall that the contraction frequency is programmed into the palette items set on the palette item line.



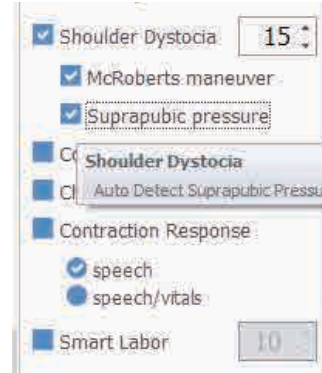
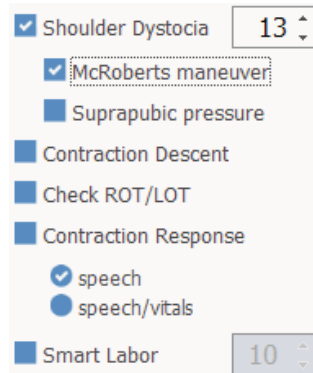
Adjust the decent curve or the point of onset, so that the delivery mechanism has time to simulate the turtle signs. In addition, configure the descent curve so that there is ample time during the shoulder dystocia simulation for several contractions to occur.



In the figure shown, the shoulder dystocia feature is active but the descent curve never passes the selected point of onset of shoulder dystocia. The configuration will not result in visible turtle signs.

Victoria may be used to practice the resolution of shoulder dystocia using the McRobert's maneuver, suprapubic pressure, posterior arm sweep, elbow-knee delivery, or any combination of various fetal maneuvers

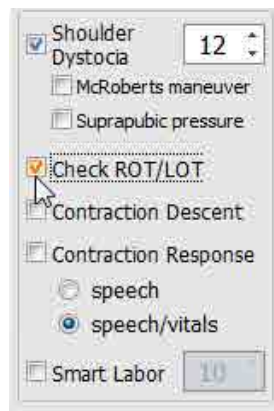
Check “McRoberts maneuver” or “Suprapubic pressure” buttons to deactivate shoulder dystocia automatically when these maneuvers are performed correctly. Alternately the dystocia mode can be deactivated by clicking again on the “Shoulder Dystocia” button.



Once the dystocia mode is off, the fetal traces and labor speed will adjust to the previous settings, and the labor will result in delivery of the baby.

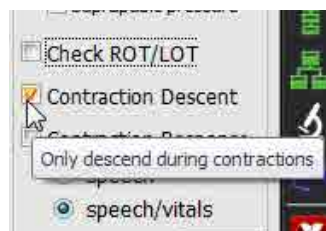
Check ROT/LOT Delivery

This option verifies that the fetal shoulders are positioned ROT/LOT before the delivery mechanism will disengage the baby to permit delivery.



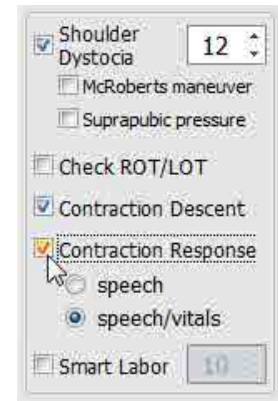
Contraction Descent

Check mark the “Contraction Descent” option to permit the delivery mechanism to descend during contractions only. If checked the fetus will not descend when the uterus is not contracting.



Contraction Response

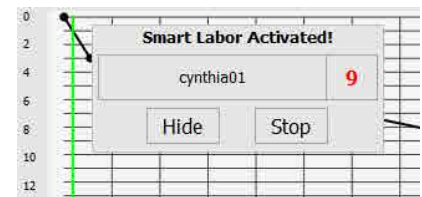
The contraction response option generates changes to the maternal vital signs or speech at the onset of each contraction. The contraction response feature simulates patients that either have or have not been given pain medications. When the feature is active, vital signs parameters increase for the duration of the contraction only. The maternal vital signs self adjust to the previous setting upon cessation of the contraction.



Selection	Speech	Speech / Vitals
Maternal Vital Signs Changes	No Changes	Increase HR, BP, and RR
Audio Palettes	"I think I'm having contractions"	"Ouch," "Ahhh," "Please, I need something for the pain," "Please give me an epidural."
Notes	Simulates a patient that is pain-controlled	Simulates a patient that is NOT pain-controlled

Smart Labor

The smart labor option adjusts the labor speed so all the non-speech palettes occur in real time. Set the timer to configure the number of seconds each new palette should play in real time. The labor will revert to the adjusted labor speed when the smart labor timer expires.

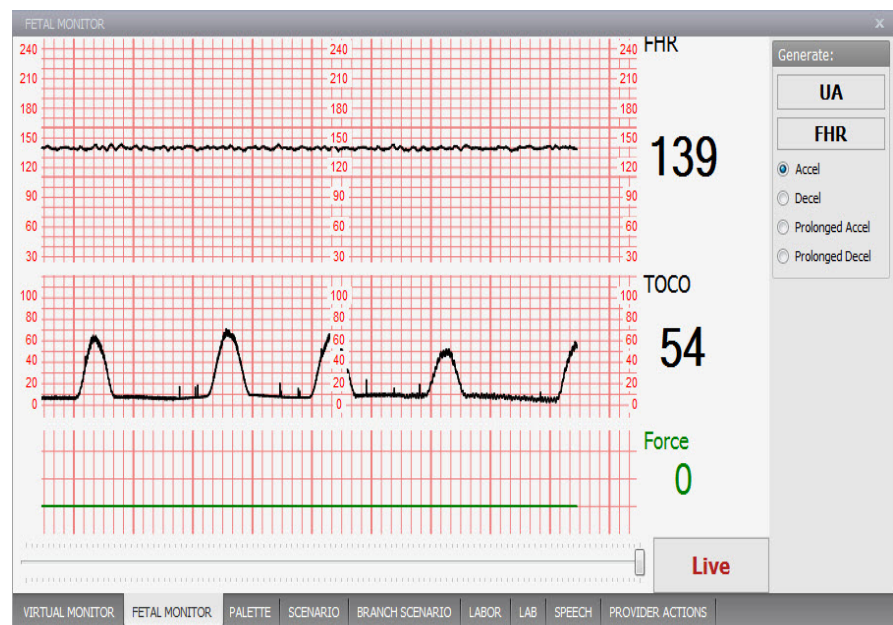


Fetal Monitor

UNI™ displays feedback data recorded by the precision delivery mechanism sensors. The window provides feedback on pull force, uterine contractions.

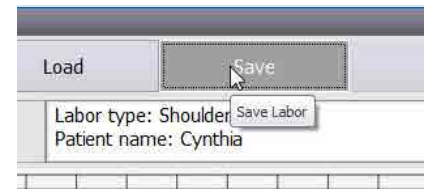
The labor activity information can assist in determining if the participant is applying too much pulling force during the delivery. The information displayed should only be used as reference material to assist the instructor in evaluating proper technique.

- **Uterine Activity** - contractions generated by Victoria. Pulling force should be applied to the baby in synchronization with the uterine contractions.
- **Peak Force** - approximate measurement of how hard the provider is pulling the fetus.
- **Slider** - Rewind the strip to see the previous graph data.

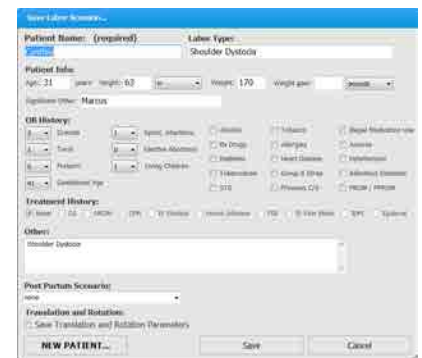


Save Labor

Click the “Save Labor” button to store the current labor configuration and options as a new scenario.



The “Save Labor Scenario...” window is displayed. Type in Patient’s name and the patient information in the blank fields and click Save.



6. Appendix

6.1 Troubleshooting

Communication/Power Issues

Communication with the simulator cannot be established or signal strength is weak

Battery is discharged or damaged	Plug in the charger and if communication is established then charge battery as per procedure explained in the manual.
Controlling computer is too far away from simulator	Minimize the distance between simulator and the tablet.
Interference caused by physical obstructions	Maintain line of sight with the simulator and direct the RF module towards the simulator
Attempting to communicate with a different simulator	Configure UNI™ to connect to the simulator by serial number under Menu > Setup > Options. Refer to digital UNI™ User Guide under Menu > Help > Instruction Manual
RF module is not detected by the controlling PC	Close the software and disconnect the RF module for at least five seconds, then plug it back in and restart the software. Connect the RF module in a different USB port.

Controlling multiple simulators from a single controlling PC

Select different channels for each of the simulators, and then try to turn them on one at a time, which means to wait until a link have been established between the tablet and the first simulator. Only after that, start the User Interface software for the second simulator, and so on for the rest of the simulators. To do so go to menu Setup > Options > Environment and then check the “Check noise in channel” box or simply manually select a desired channel.

AC adapter is damaged

Verify the power adapter LED to ensure the adapter is working. Disconnect the power adapter from the wall and the simulator and inspect the connector for damage or broken pins.

All Others

Close the User Interface software and unplug the RF module for at least 5 seconds, then plug it back in. Restart the software and wait for initialization.

Commands are taking longer than usual to take effect or simulator is not reporting every action (Signal strength indicator is low)

Distance between computer and manikin is reaching its limit, or there are too many obstructions in between (walls, etc.)

Get simulator closer to computer or move away from obstructions.

There's too much RF interference either from another Gaumard tetherless simulator in the vicinity or an RF radiator.

Try changing the RF channel by going to Menu > Setup > Options > Environment.

Simulator does not power or communication is never established (wired connectivity only)

Data cable is not connected. USB communication Module is not connected.

Verify connection of the Ethernet cable and USB module to the computer's USB port.

Wrong serial number entered in the options menu

From the menu bar, enter the simulator's serial number in the Setup > Options > Environment tab

Power supply is disconnected

Connect the power supply to the simulator and restart the UNI™ software

Simulator does not run on internal battery power

Battery old or not charged properly

When plugging in the charger make sure the LED indicator goes through the complete charging sequence described in the charger's label. Replace battery. Batteries would last between 3-5 years depending on use. Battery life is dramatically reduced if it hasn't been charged at least once every 3 months.

UNI™ has set the power mode to STAND-BY automatically

The battery on the manikin is depleted

Plug in the charger.

Simulator doesn't respond to any command although signal strength is excellent

UNI™ has established communication with a different simulator

Configure UNI™ to connect to the simulator by serial number under Menu > Setup > Options. Refer to digital UNI™ User Guide under Menu > Help > Instruction Manual

Miscellaneous Issues

Intubation is falsely detected

Intubation sensor requires recalibration

Remove any adjuncts from the airway and complete the reset procedure outlined. Refer to digital UNI™ User Guide under Menu > Help > Instruction Manual.

Artificial ventilations are not properly detected or not detected at all

Ventilations are not calibrated

See the "Calibration Wizard". Refer to digital UNI™ User Guide under Menu > Help > Instruction Manual.

Chest does not rise with artificial ventilation (e.g. BVM)

Simulator not running	Turn the simulator on
Air is escaping between the mask and the simulator's skin	Maintain a tight seal between the BVM mask and the simulator

Low chest rise (or no chest rise at all) while breathing

Respiratory pattern is set to apnea	Change the respiratory pattern to a healthy pattern
Inspiratory percentage is set to a low value	Set Respiration Rate to 13, and Inspiratory Time to 33%

Chest compressions are not detected

Heart rhythm is set to sinus	Set the heart rhythm to a critical heart rhythm such as VFib or Asystole
Compression sensor is not calibrated	Calibrate the chest compressor using the UNI™ calibration menu. Refer to digital UNI™ User Guide under Menu > Help > Instruction Manual

Korotkoff sounds do not match systolic and/or diastolic set values

BP sensors are offset	Recalibrate BP cuff sensors on the simulator as per “Calibration” section
-----------------------	---

Wrong placement of BP Cuff	See correct cuff placement under section “Circulation”
----------------------------	--

No left radial pulse

Radial pulses are disabled	Enable the radial pulses using the details controls
----------------------------	---

Blood pressure values require calibration	Refer to digital UNI™ User Guide under Menu > Help > Instruction Manual to recalibrate the blood pressure
---	---

Pupils are reacting erratically

Eyes are not calibrated for the current environment	Recalibrate the pupil dilation for the current ambient light. Refer to digital UNI™ User Guide under Menu > Help > Instruction Manual for more information on the pupil dilation procedure.
---	---

Medication is not being recognized by the UNI™ software

Syringe is not programmed with a medication	Refer to digital UNI™ User Guide under Menu > Help > Instruction Manual to program a tagged syringe with a medication.
---	--

UNI™ is operating in the Manual Mode	Switch to the Automatic mode to enable the drug recognition system
--------------------------------------	--

Tagged syringe is not detected by the drug recognition proximity sensor	This could happen when injecting the cephalic vein close to the hand and having the syringe parallel to the plane of the forearm.
---	---

Volume injected is not registered by the UNI™ software accurately

Drug recognition arm requires calibration	Refer to digital UNI™ User Guide under Menu > Help > Instruction Manual to calibrate the IV medication infusion.
---	--

Fluid is being injected too fast	Inject fluid into the arm slowly. Use a 22 g needle to control the rate and maximize the life of the arm materials. The maximum injection rate is 1L/hr.
----------------------------------	--

Not reading the syringe ID	The tagged syringe is too far from the arm sensor. The system will register less volume injected if the tagged syringe is not detected.
----------------------------	---

Fluids are being injected through the fill ports	Injecting fluids using the fill ports will report lower volumes. Use a syringe to inject the veins directly for greater accuracy.
--	---

Fluid reservoir is full

The arm's internal reservoir is 40 cc. Attach the drain port to allow excess fluid to drain.

Preprogrammed scenarios are not available

Incorrect profile is loaded

Load the "Quick Start Victoria" profile. To switch between profiles without exiting the software, Click File > Profile on the menu bar.

The simulator's audible features (heart, lung, Korotkoff, etc.) are low or cannot be heard at all

Audio feature volume is set to mute or low

Adjust the volume levels on the status panel

Oximeter reading does not coincide with value set on the UNI™ software

Monitor sensor is placed on the wrong finger

Place the sensor on the left index finger

Oxygen saturation feature is not calibrated to work with the specific device currently in use

Follow the instructions to calibrate the simulator to work with the oxygen saturation monitor and sensor currently in use. Refer to digital UNI™ User Guide under Menu > Help > Instruction Manual.

The simulator can only be calibrated to work with one oxygen saturation monitor and sensor at a time. Oxygen saturation monitors that detect carbon monoxide and/or methemoglobin are not supported.

Streaming Audio Issues

Streaming audio quality is poor or there are echoes

Noisy channel or another Gaumard tetherless simulator is nearby

Select a different channel. When more than one simulator is in the vicinity, allow one channel between them

Computer too far from simulator

Streaming audio can reach as far as normal data with a range of up to 150 ft./ 50 meters line of sight between simulator and PC. Keep antenna upright for maximum range.

Respiration and other undesirable sounds are heard by instructor

Since simulator's microphone sensitivity is high in order to capture the voice of providers, it also captures all surrounded noises on or around the simulator. This is normal and it is not a malfunction.

Faulty headset

Test using a headset known to work with other equipment.

Microphone gain is set too high or too low

Use the slider to modify the "Output Gain" the gain on the Streaming Voice Control window.

Headset is disconnected

Headset connectors are connected to the wrong ports

Close UNI™ and connect the MIC and Headphone jacks into the designated ports on the computer. Restart the software.

Headset is not recognized by UNI™

Headset is not set as default input device.

Close the software and connect the MIC and Headphone jacks into the designated ports on the control PC. Then, set the headset as the default device on the control PC's audio manager software

Streaming audio does not work

"Generic" simulator is checked under "Setup/Options" menu

Select "Fixed" simulator environment ("Setup/Options" menu), and enter the Serial Number of the simulator you are trying to communicate with. Streaming audio does not work when "Generic" simulator is checked.

Virtual Monitor Connection Issues

Vital signs are flat lined or not updating

PC and virtual monitor
are not connected to the
wireless network

Tablet only - Exit the UNI™ software
and the Gaumard Monitors software
and connect to the GaumardNet
network. Restart the Gaumard
software.

PRO+ only: Exit the UNI™ software
and the Gaumard Monitors software
and connect to the PRO+ network.
Restart the Gaumard software.

UNI™ is not broadcasting the
vital signs information.

Tablet only - From the Gaumard menu
bar, go to Monitors > Configuration.
Set the adapter to “Wireless network
connection”. Verify the controller
name and port number match the
settings on the Gaumard monitor’s
“Comm Setup” menu.

PRO+ only - From the Gaumard menu
bar, go to Monitors > Configuration.
Set the adapter to “Local Area
Connection”. Verify the controller
name and port number match the
settings on the Gaumard monitor’s
“Comm Setup” menu.

USB communication module
is not connected

Connect the Communication module
to the control computer and restart
the software.

Virtual monitor option is not activated

On the menu bar, click Setup > Options > Environment tab and set the connection mode to FIXED, then enter the simulator's serial number and save the settings. Return to the Options menu and select the "Add-ons" tab. Checkmark "Use virtual monitors" and enter the activation code. Finally, restart the software.

Sensors are off

On the UNI™ menu bar, go to Monitors > Sensors > and click "All on"

Recording and Debriefing Issues

PRO+ cameras are not detected in the camera setup menu

The wireless camera's power supply is not connected to a power outlet

Connect the camera to the power supply and restart the PRO+ PC

The PRO+ internal wireless antenna is off

Set the PC's wireless capability switch to the "On" position.

The wireless network name has been changed

On the PRO+ wireless network properties, change the wireless name back to the factory default.

Camera is detected in the camera setup but there is no feed on the main window

Main view distribution is not configured	Click the “Main view” setup icon, and select the active video and monitor feeds.
--	--

Events are not listed on the PRO+ event panel during the scenario

RF Module is not connected	Connect the RF module and restart the software
PRO+ is not recording	On the UNI™ menu bar, click File > New Session to start a new scenario

Dashboard screen is unreachable or not found

The PRO+ wireless antenna is off	Set the PC’s wireless capability switch to ON.
Virtual monitor PC is not connected to the PRO+ PC wireless network	From the Virtual monitor PC wireless menu, search and connect to the PRO+ network.

Victoria Specific Issues

Fetus is disengaged prematurely/very easily

The force sensor is detecting more than 35 pounds of pull force, and it is unlocking the fetus to prevent damage to the system.

For information on how to calibrate the force sensor, refer to Victoria specifics below.

Fetus does not release automatically

Delivery progress line has not reached the end of the labor scenario.

The fetus is locked onto the birthing arm until the progress line reaches the end of the delivery. Refer to digital Victoria user guide to learn more about the descent curve and the labor graph. See the shoulder dystocia section below for additional troubleshooting.

Birthing Baby battery is discharged.

Check 2nd battery indicator the UNI™ software. If the battery symbol is not present at all, it means the baby's battery is discharged. Charge the baby as per instruction in the User Guide.

Dystocia is "ON"

The fetus is not released automatically at the end of the labor when the shoulder dystocia feature is enabled. Disable the shoulder dystocia and click "release" to disengage the fetus.

Insufficient lubrication

Lubricate the entire fetus, cervix, and the birth canal. Insufficient lubrication may result in damage to the equipment and prevent the fetus from sliding through the birth canal.

Delivery mechanism does not return to the starting position when “reset” is clicked at the end of the labor scenario

Motor is “disoriented”

Recalibrate the starting position of the birthing mechanism. Refer to Victoria Specifics section below to complete the reset labor motor procedure.

Fetus does not rotate as programmed

Insufficient lubrication

Dry skin prevents rotation of the fetus. Manually lubricate the entire fetus, cervix, and the birth canal before the delivery.

Fetus improperly placed

Utilize the delivery ring around the legs of the fetus as instructed in the “working with Victoria” section.

Birth canal tearing prematurely

Insufficient lubrication

Dry skin is pulling the fetus back. Make sure to manually Lubricate the entire fetus, cervix, and the birth canal before the delivery as well having the lube reservoir filled.

Birthing Baby' sensors are reporting incorrect values

Birthing Baby's sensors need calibration

Reset the sensors on the fetus. Refer to Victoria specifics below to complete reset of the sensors.

7.2 Victoria Specifics

Calibration Menu

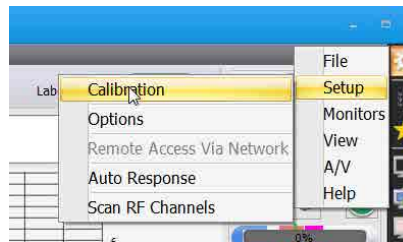
This tool allows you to calibrate the sensors inside the simulator. First choose which function you would like to calibrate: chest compressions, artificial ventilations, blood pressure cuff, oxygen saturation, medication infusion. The Simulator will not breathe or have chest rise during any calibration procedure. This is completely normal and the stimulator is designed to work this way. For more information refer to the digital UNI™ user guide under Menu > Help > Instruction Manual.

Factory Settings

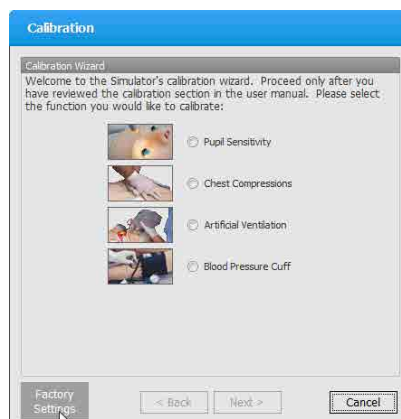
Factory Settings is a very useful tool to consider when recalibrating. It restores the sensors to factory settings over-riding any calibrations performed by users.

To reset all the sensors related to Victoria specifics and the Birthing Baby:

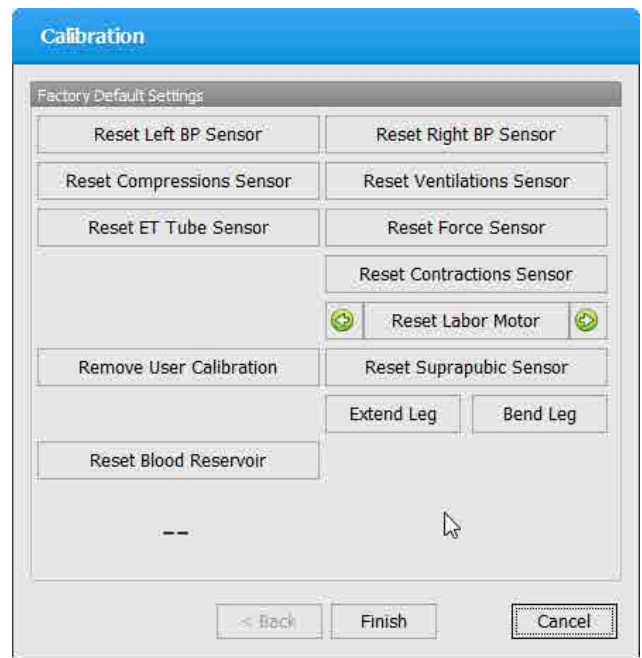
1. Open the calibration window



2. Select Factory Settings



To troubleshoot issues with the birthing mechanism reset the labor motor.



The green arrows beside the “Reset Labor Motor” control (pictured above) permit the user to move the delivery mechanism forwards or backwards in 2 inch increments.

To reset all the sensors on the Birthing Baby, follow the instructions:

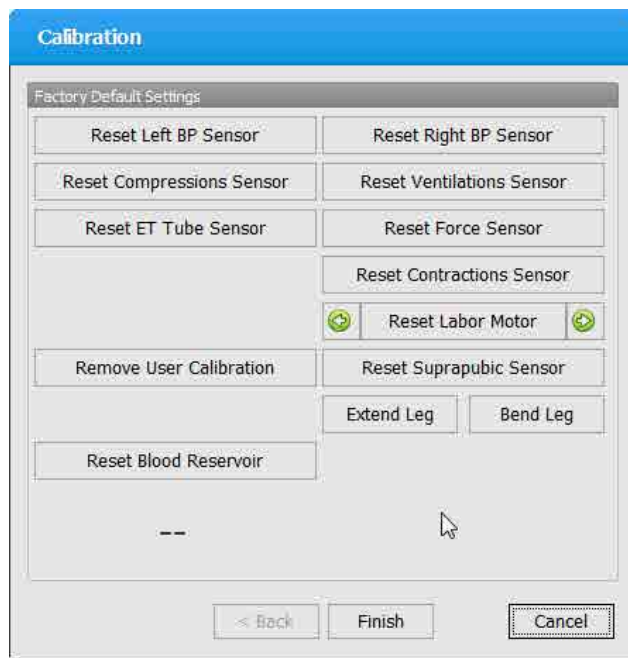
1. Position baby on the cradle



2. Connect baby service cable to the foot power supply port
3. Connect the service cable to Victoria abdominal cover power port



- Click “Reset Force Sensor” from the Calibration window



The Birthing Baby is calibrated at the factory prior to shipment. Only reset for troubleshooting purposes.

Silicone Repair Kit

The silicone repair kit is intended to fix small tears on the silicone skin of either Victoria or the Birthing Baby.

Instructions for Use

- Use gloves to perform this procedure
- Clean the damaged area of the skin with alcohol wipes
- Locate the silicone repair kit



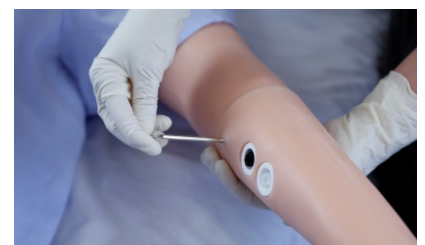
4. Remove the white cap on the syringe preloaded with the silicone adhesive
5. Gently apply the silicone adhesive over the damaged area. Dispense the material in a slow continuous stream by applying gentle pressure on the plunger of the syringe
6. Use a soft lint free cloth to remove excess bonding material
7. Allow the repaired area to dry for a minimum of 2 hours before resuming use
8. Place the white cap back on the syringe to preserve any remaining silicone adhesive



Replacing IV Veins

To replace the veins used in the lower arms, follow the instructions listed below:

1. Gather the following items:
 - › Replacement vein set
 - › Talcum powder
 - › Clear tape
 - › Hemostat
2. Attach the drainage tube to the drainage port on the lower arm of the simulator, and purge the system of any fluids that may remain from prior use
3. Remove drainage tube after the arm has been purged
4. Use the Allen key provided to unscrew the lower arm as shown



5. Partially separate the lower arm from the upper arm to reveal the connections



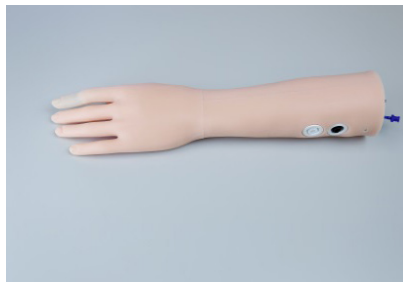
6. Disconnect the blue pulse line and the Osat cable if repairing the left arm



7. Disconnect the blue pulse line, the drug recognition system (black and white hoses and a wire connector) if repairing the right arm



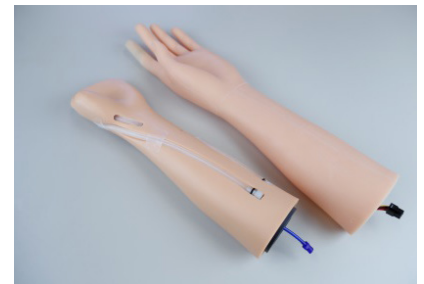
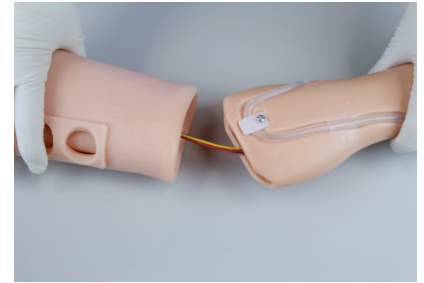
8. The lower arm is now disconnected from the upper arm



9. Gently pull back the skin from the lower arm and remove it completely



10. Notice that when removing the left arm skin, the Osat cable will remain attached to the skin



11. To replace the veins gently pull to separate them from the white elbow connectors as shown in the picture



12. Remove the tape holding the veins



13. Disconnect the vein tubing from the arm



14. Remove both black rings from the vein tubing

15. Locate the replacement vein set

16. Measure and cut the new vein to be installed

17. Place the black rings on the replacement vein



18. Position the replacement vein in the lower arm as shown in the pictures



19. Use new tape to hold the vein tubing as previously



20. Insert the replacement vein tubing to each white connector, and secure them with the black rings



21. Apply talcum powder inside the lower skin to aid with the placement



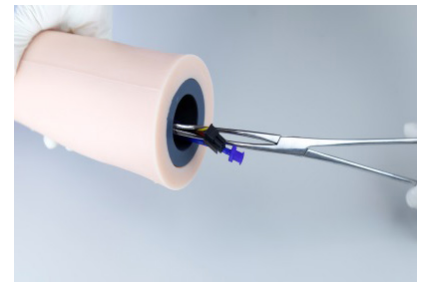
22. Reinsert the Osat cable into the lower arm if working with the left arm



23. Place the skin over the hand and pull the skin all the way up



24. Once the skin is in place use a hemostat or a similar tool to grab the Osat cable from the inside of the left lower arm



25. To reinstall the lower arm to upper arm follow the same steps as instructed above

Wireless Network

UNI™ generates the vital signs information displayed on the virtual monitor PC. The information is transmitted through a wireless ad-hoc connection between the two computers in real time.

The wireless settings are configured at the factory, so no additional configuration is required.

Use the “Create an ad-hoc Wireless network” tool to configure the wireless ad-hoc link between the two computers. Then, configure the connection between UNI™ and the Gaumard Monitors software.

UNI™ Network Configuration

Complete the next steps using the “Controller - Create Ad-Hoc Wireless Network” tool built in to UNI™ software.

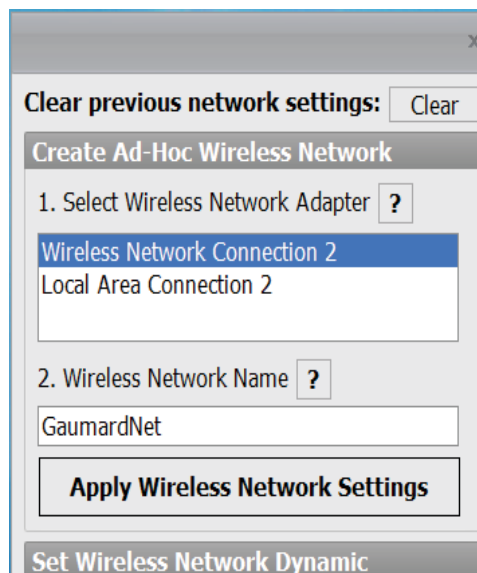
1. From the menu bar, go to Help > “Create ad-hoc Wireless Network”

The “Controller - Create Ad-hoc Wireless Network” window is displayed

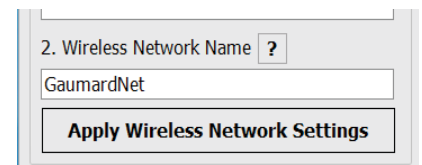
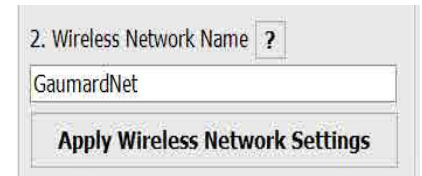
2. Clear previous network settings



3. Select the “Wireless Network Adapter”. If the wireless adapter is not listed, first enable the adapter using the Windows® network menu and then return to this window



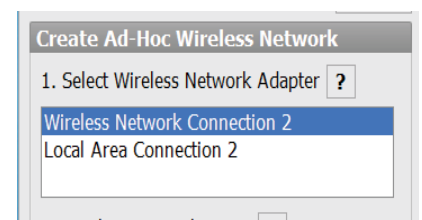
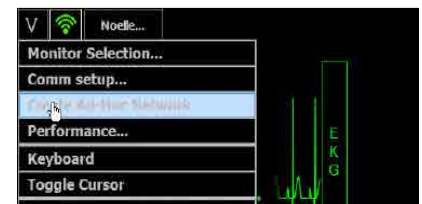
4. Enter a wireless network name (case sensitive). Use the same wireless network name to configure the Gaumard Monitors PC. “GaumardNet” is the required name for Windows® 7 and 8 computers
5. Click “Set Dynamic IP” to set the wireless network dynamic. Notice that the word “Done” will appear
6. Click “Apply Wireless Network Settings” to save the settings
7. Restart the computer



Gaumard Monitors Network Configuration

After the UNI™ control computer is configured, complete the next steps using the “Create an ad-hoc network tool” included in Gaumard Monitors software.

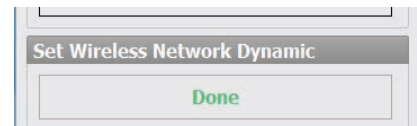
1. On the virtual monitor computer, click the Gaumard Monitors icon to start the vital signs software.
2. Click the V menu near the top left corner and select “Create Ad-Hoc Network.” The “Virtual Monitor - Create ad-hoc Wireless Network” window is displayed
3. Select “Wireless Network Adapter.” If the wireless adapter is not listed, first enable the adapter using the Windows® network menu and then return to this window



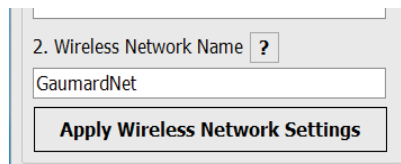
4. Enter a wireless network name (case sensitive). Use the same name entered in the controller computer. “GaumardNet” is the required name for Windows® 7 or 8 computers



5. Click “Set Dynamic IP” to set the wireless network dynamic. Notice that the word “Done” will appear



6. Click “Apply Wireless Network Settings” to save the settings



7. Restart the computer

Configure the Vital Signs Broadcast

After the wireless ad-hoc link is established between both computers, complete next steps to configure the transmission of the vital signs information.

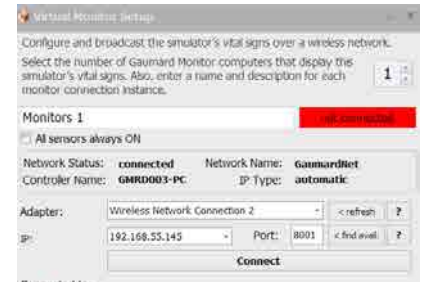
1. Verify that both computers are connected to the GaumardNet network using Windows® wireless connection menu. If the computers are not connected, select the “GaumardNet” network and click “Connect” manually



2. Start the UNI™ control software

3. On the UNI™ menu bar, click Monitors > Configuration

4. The “Virtual Monitor Setup” window is displayed



5. Set the adapter to “Wireless network connection”

6. Verify the network status and network name, then click “Connect” to begin transmitting the vital signs information

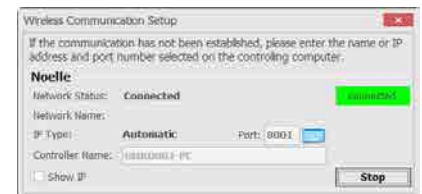
7. Write down the “Controller Name” and “Port number”

8. Start the Gaumard Monitors software on the virtual monitor PC

9. Click the “V” menu near the top left corner, and then select “Comm Setup.” The “TCP Comm Setup” window is displayed



10. Click “Connect” to accept the incoming connection



To connect both computers using a local internet network, follow the steps below:

1. Verify that both computers have applied “Set Wireless Network Dynamic”. Refer to UNI™ and Gaumard Monitors network configuration sections for instructions
2. Disconnect both computers to the GaumardNet network and connect them to the local network manually using Windows® wireless connection menu
3. Repeat the same steps listed above to connect the UNI™ software to the Gaumard Monitors software



7.3 Consumables

Please contact Gaumard for more information regarding consumables.

Item	Color	Code
Birth Canal	Light	S2200.134.L
	Medium	S2200.134.M
	Dark	S2200.134.D
Epidural Insert	Light	S2200.130.L
	Medium	S2200.130.M
	Dark	S2200.130.D
Regular Episiotomy Suture Trainer Set of two	Light	S2200.133.L
	Medium	S2200.133.M
	Dark	S2200.133.D
4 th Degree Episiotomy Suture Trainer	Light	S2200.233.L
	Medium	S2200.233.M
	Dark	S2200.233.D
C-section Surgical Insert	Light	S2200.138.R2.L
	Medium	S2200.138.R2.M
	Dark	S2200.138.R2.D
C-section Surgical Insert (Revision 3)	Light	S2200.138.R3.L
	Medium	S2200.138.R3.M
	Dark	S2200.138.R3.D
Left Arm Skin With O ₂ saturation sensor	Light	S2200.123L.L
	Medium	S2200.123L.M
	Dark	S2200.123L.D
Right Arm Skin	Light	S2200.123R.L
	Medium	S2200.123R.M
	Dark	S2200.123R.D

Item	Code
Cervix	S2200.136
Fully Dilated Cervix	S2200.146.5
Umbilical Cord Set of two	S2200.137
Mineral Oil Set of four 1/4 gallon bottles	GU.181.1
IV Antecubital Veins With "O" rings	S2200.411
Synthetic Blood Concentrate Makes 6 gallons / 22.7 liters	S2200.080
Syringe Labels Pack of 100	S2200.092

8. Warranty

8.1 Exclusive One-Year Limited Warranty

Gaumard warrants that if the accompanying Gaumard product proves to be defective in material or workmanship within one year from the date on which the product is shipped from Gaumard to the customer, Gaumard will, at Gaumard's option, repair or replace the Gaumard product.

- This limited warranty covers all defects in material and workmanship in the Gaumard product, except:
 - › Damage resulting from accident, misuse, abuse, neglect, or unintended use of the Gaumard product;
 - › Damage resulting from failure to properly maintain the Gaumard product in accordance with Gaumard product instructions, including failure to properly clean the Gaumard product; and
 - › Damage resulting from a repair or attempted repair of the Gaumard product by anyone other than Gaumard or a Gaumard representative.

This one-year limited warranty is the sole and exclusive warranty provided by Gaumard for the accompanying Gaumard product, and Gaumard hereby explicitly disclaims the implied warranties of merchantability, satisfactory quality, and fitness for a particular purpose. Except for the limited obligations specifically set forth in this one-year limited warranty, Gaumard will not be liable for any direct, indirect, special, incidental, or consequential damages, whether based on contract, tort, or any other legal theory regardless of whether Gaumard has been advised of the possibilities of such damages. Some jurisdictions do not allow disclaimers of implied warranties or the exclusion or limitation of consequential damages, so the above disclaimers and exclusions may not apply and the first purchaser may have other legal rights.

This limited warranty applies only to the first purchaser of the product and is not transferable. Any subsequent purchasers or users of the product acquire the product "as is" and this limited warranty does not apply.

This limited warranty applies only to the products manufactured and produced by Gaumard. This limited warranty does not apply to any products provided along with the Gaumard product that are manufactured by third parties. For example, third-party products such as computers (desktop, laptop, tablet, or handheld) and monitors (standard or touch-screen) are not covered by this limited warranty. Gaumard does not provide any warranty, express or implied, with respect to any third-party products. Defects in third-party products are covered exclusively by the warranty, if any, provided by the third-party.

- Any waiver or amendment of this warranty must be in writing and signed by an officer of Gaumard.
 - › In the event of a perceived defect in material or workmanship of the Gaumard product, the first purchaser must:
 - › Contact Gaumard and request authorization to return the Gaumard product. Do NOT return the Gaumard product to Gaumard without prior authorization.
 - › Upon receiving authorization from Gaumard, send the Gaumard product along with copies of (1) the original bill of sale or receipt and (2) this limited warranty document to Gaumard at 14700 SW 136 Street, Miami, FL, 33196-5691 USA.

If the necessary repairs to the Gaumard product are covered by this limited warranty, then the first purchaser will pay only the incidental expenses associated with the repair, including any shipping, handling, and related costs for sending the product to Gaumard and for sending the product back to the first purchaser. However, if the repairs are not covered by this limited warranty, then the first purchaser will be liable for all repair costs in addition to costs of shipping and handling.

8.2 Extended Warranty

In addition to the standard one year of coverage we offer a range of service plans through our Gaumard Cares program. For more information about Gaumard Cares service planes please contact customer service.

9. Contact Gaumard

9.1 Contacting Technical Support

Before contacting Technical Support you must:

1. Have the simulator's serial number
2. Have access to the simulator for possible troubleshooting as needed

Technical Support:

Email: support@gaumard.com

USA: 800-882-6655

INT: 01-305-971-3790

9.2 General Information

Sales and Customer Service:

E-mail: sales@gaumard.com

USA: 800-882-6655

INT: 01-305-971-3790

Fax: 305-667-6085

Post:

Gaumard Scientific
14700 SW 136 Street
Miami, FL 33196-5691
USA

Office Hours:

Monday-Friday, 8:30am - 7:30pm EST

Gaumard®, ZOE®, Michelle®, Mike®, PEDI®, Susie Simon®, Susie®, Simon® Code Blue®, SIMA Models®, SIMA GYN/AID®, Virtual Instruments®, Code-maker®, Code Blue®, NOELLE®, Simulation Made Easy™, HAL®, eCPR™, Zack™, RITA™, Chloe™, Seatbelt Susie™, Krash Kids™, Premie™, UNI™, Omni®, SmartSkin™ are trademarks of Gaumard Scientific Company.

Always dispose of this product and its components in compliance with local laws and regulations.

www.gaumard.com | 800-882-6655 | 305-971-3790 | Fax: 305-667-6085 |

sales@gaumard.com © 2019 Gaumard® Scientific. All rights reserved. Patented; other patents pending.

MADE IN THE U.S.A.

UG.S2200