

The Department of Child and Youth Studies at Stockholm University

Stockholm University

The university was founded in 1878 and is situated in the scenic Royal National City Park in Stockholm the capital of Sweden.

Stockholm University has about 29,300 students (full-time equivalents), 1,400 doctoral students, and 5,700 members of staff.

Stockholm University is one of the 200 highest-ranked universities in the world and one of the top 100 universities in Europe according to several well-established university ranking tables.

More information about the university is available [here](#).



The Department of Child and Youth Studies

The Department of Child and Youth Studies is the fifth largest department at Stockholm University in terms of enrolled full-time students and the department is part of the Faculty of Social Sciences, which belongs to the Humanities area at Stockholm University.

The department conducts teaching and research in Children's Culture, Child and Youth Studies, Early Childhood Education and Extended Education. Courses with English as the language of instruction are offered within the subject fields of Early Childhood Education and Extended Education.

The Department of Child and Youth Studies is situated in the north-east of campus Frescati, at Stockholms university close to the scenic Royal National City Park. The department has newly renovated and student-friendly premises with good access to study places, group rooms and a student kitchenette.

More information about the Department of Child and Youth Studies is available [here](#).



Semester dates

Autumn semester: September until Mid- January*

Spring semester: Mid- January until Early June

*For courses with English as the language of instruction at the Department of Child and Youth Studies there are no campus-based classes in January. During this period students will work on assignments and may have a few online-based classes. This is in order to enable exchange students to go home for Christmas if they like.

[Web page with semester dates.](#)

Courses with English as the Language of instruction at the Department of Child and Youth Studies

Early Childhood Education

UB313F Early Childhood Education Focusing on Science and Education for Sustainability 12 credits (ECTS) www.buv.su.se/UB313F

UB308F Early Childhood Education: Explorative Learning, 6 credits (ECTS)
www.buv.su.se/UB308F

UB314F Early Childhood Education Focusing on Mathematics and Technology, 12 credits (ECTS) www.buv.su.se/UB314F



The courses in Early Childhood Education are offered both during the autumn and spring semester.

An advantage with these courses is that Swedish students from the program in Early Childhood Education can choose these courses which means that exchange students will get to know local students during the courses.

School-age Educare

UE2097 School-age Educare, 15 credits (ECTS) 50% study pace www.buv.su.se/UE2097

The course is offered during autumn semesters and can be combined with one or two of the Early Childhood Education courses or with a 15-credit course offered by another department.

Student interviews

Via this [link](#) you can read interviews with some of our previous exchange students. This could be used as a way to promote interest for potential exchange students.

Academic year and course structure at Stockholm University

The academic year in Sweden consists of two semesters; each semester is about 20 weeks.

One semester of full-time studies corresponds to 30 credits (ECTS).

Our courses are 7.5, 15 or 30 credits each (with a few exceptions).

The semester is divided into four periods - A, B, C and D – each period approximately 5 weeks.

One semester - 30 credits			
Period 1		Period 2	
Period A	Period B	Period C	Period D
7.5 credits	7.5 credits	7.5 credits	7.5 credits
15 credits		15 credits	
30 credits			

At Stockholm University, in most cases, students study one course at a time and then they have an exam. After that they continue with the next course. When choosing courses for the exchange period it is therefore important to check that the chosen courses are evenly distributed over the semester. For instance, it is not possible to choose two full time 7.5 ECTS courses that both are given in period A.

Application procedure for incoming students to the Department of Child and Youth Studies*

1. Nomination by home university: First the student needs to be nominated for the exchange by the home university.

2. Information package: Once the Department of Child and Youth Studies has been informed about the nomination the international coordinator will send you our guide for nominated students along with our application form.

3. Questions: The home university and the student are most welcome to contact us with questions during the application process.

4. Language Proficiency Requirements: Incoming exchange students are required to have at least level B2 English proficiency according to the [Common European Framework of Reference for Languages \(CEFR\)](#).

This can be certified by the home university in the application or by including a language certificate in the application.

For incoming exchange students that would like to study courses with Swedish as the language of instruction the requirement is also at least level B2 according to the [Common European Framework of Reference for Languages \(CEFR\)](#).

5. Application: The application needs to be complete and handed in according to deadline. The application should include:

- The application form (including course selection)
- Official Transcript or Records in English
- Letter of interest
- Emergency Contacts
- Language Certificate (unless the home university has certified level B2 in the application form).

6. Decision and letter of acceptance: The application will be processed and the student will be contacted if anything needs to be clarified or if there needs to be changes in the course selection. If the application is approved the student will receive a letter of acceptance.

7.If applicable - Visas and residence permits: If a visa or residence permit is required the student needs to apply for this – see instructions under headline “Information regarding visas and residence permits” below.

8. Housing application: Eligible students that have applied in time will be contacted by the Housing Office through email with information on how to apply for housing.

9. If applicable - Learning Agreement: The student will send a completed and signed Learning Agreement to the International Coordinator at the Department of Child and Youth Studies according to deadline.

10. Information about welcome activities and more detailed course information: Before the start of the exchange semester the student will get more information regarding arrival, welcome activities for exchange students and more detailed course information.

*Stockholm University is in the process of implementing Erasmus without papers which means that nomination, application, learning agreements etc. will be handled digitally via the system Mobility Online in the future.

Deadlines*

Autumn semester:

Nomination deadline for the autumn semester: April 15th

Application deadline for the autumn semester: May 1st

Deadline for Learning Agreements for the autumn semester: August 15th

Spring semester:

Nomination deadline for the spring semester: September 20th

Application deadline for the spring semester: October 1st

Deadline for Learning Agreements for the spring semester: December 1st

* Currently the departments at Stockholm University decide their own deadlines. It could be the case in the future that Stockholm University decides on university-wide deadlines. In that case these dates could be subject to change.

Grading system

Please find a description of the Higher Education System and the Grading System at Stockholm University [here](#).

Transcripts of records after the exchange will be sent to the home university approximately one month after the end of the semester.

Housing

Stockholm University does not offer a housing guarantee. All exchange students that apply in time are contacted by the Housing Office at Stockholm University and can apply for housing through the Housing Office.

The Housing Office handles all contacts regarding housing and provides students that are not offered housing with instructions on how they can look for housing on their own.

The chance of being offered housing is much better for the spring semester than for the autumn semester.

Stockholm University do not offer shorter rent periods which means that exchange students studying less than one semester always must arrange housing on their own (or rent a student apartment for the entire semester even if it is only used part of the semester).

[More information about housing.](#)

Information about general living costs in Sweden can be found [here](#).

Insurance

Please see more information about insurance for incoming exchange students here:

[Stockholm University insurance information](#)

[Student IN insurance for exchange students in Sweden](#)

Information regarding visas and residence permits

Please see more information about visas and residence permits [here](#).



Welcome activities and social activities for incoming students

Stockholm University offers a range of welcome activities for instance arrival Service at the airport, orientation day, a guided bus tour, a tour to IKEA, various social events, and an open fair where you get to meet staff from the University and different student associations.

Read more here: www.su.se/welcomeactivities

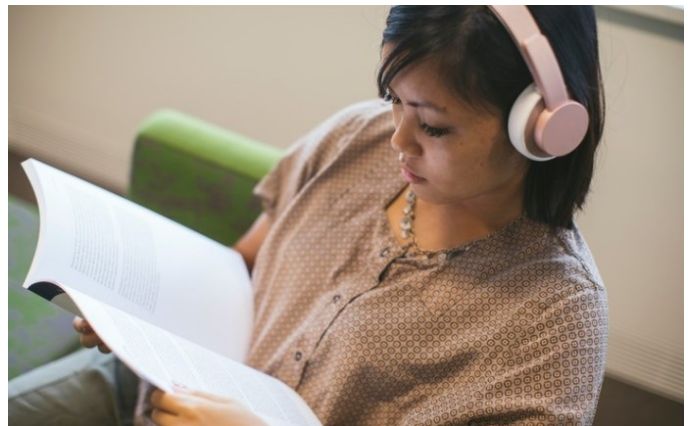
General information for new students: www.su.se/newstudent

The Teacher Education Departments at Stockholm University also arranges activities together to welcome exchange students. These activities include a joint welcome meeting and a buddy network linking exchange students with local students. Read more about the Buddy Program [here](#).

Service for students with disabilities

Students with a disability are welcome to Stockholm University. Stockholm University provides various forms of special pedagogical support to students with long-term disabilities. The support is based on your individual needs and aims to facilitate your studies. The goal is to give all students the opportunity to study under equal conditions. The support measures should be reasonable with regard to the disability, the course requirements, and the intended learning outcomes.

Arrangements for special pedagogical support for exchange students have to be agreed on and planned in good time before the exchange. The sending institution is responsible to communicate if a nominated student needs special pedagogical support as early as possible in the application process – and at the latest by the nomination deadline.



The sending institutions is also responsible for covering all extra costs regarding special pedagogical support in connection with the exchange. Universities and colleges within the EU and EEA can apply for extra funding to cover associated costs regarding special pedagogical support on an Erasmus placement. It is always the home university that applies for this on their outgoing student's behalf, not the individual student.

More information regarding for special pedagogical support for exchange students is available [here](#) (see headline "Apply for support as an exchange student").

Please contact the International Coordinator at The Department of Child and Youth Studies for more information.

Information regarding Erasmus without papers

Currently Stockholm University is in the process of implementing Erasmus without papers.

The long-term plan is to use the system “Mobility Online” for both exchange agreements and other Erasmus documents as well as nominations and applications.

Until Mobility Online is available we will use Dashboard for Learning Agreements

For exchange agreements we will need to wait until Mobility Online is available until we can sign agreements digitally. This will probably be possible during the first half of the spring semester 2022.

Information about Stockholm and Sweden

A tourist guide for the city of Stockholm can be found [here](#) and a tourist guide for Sweden can be found [here](#).

Contact information

Malin Håkansson
International Coordinator

The Department of Child and Youth Studies
Stockholm University
Phone: +46(0)8 12076246
E-mail: international@buv.su.se

The international coordinator is the contact person for both incoming and outbound exchange students as well as regarding exchange agreements.

