

La **Cepa Verificada CECT** es un material de referencia recomendado por Normas Internacionales de Calidad como microorganismo control y que ha sido objeto de ensayo en la CECT con los resultados que se muestran en este certificado.

**CECT Verified Strain** is a reference material recommended as testing microorganism in International Quality Standards, and assayed at CECT with the results shown in this certificate.

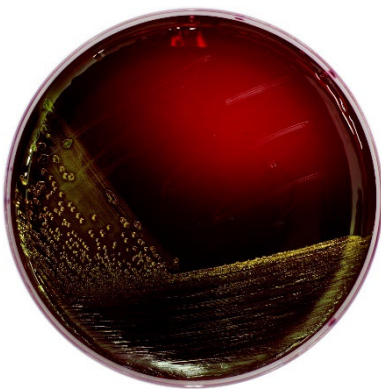
## CHARACTERIZATION

### Miniaturized biochemical test API 20E

+	-	+	+	-	-	-	-	+	-	-	+	+	-	+	+	-	+	-	+	-
1	2	4	1	2	4	1	2	4	1	2	4	1	2	4	1	2	4	1	2	4
ONPG	ADH	LDC	ODC	CIT	H <sub>2</sub> S	URE	TDA	IND	VP	GEL	GLU	MAN	INO	SOR	RHA	SAC	MEL	AMY	ARA	OX
5			1			4			4			5			5			2		

Identification: 99,9% ID *Escherichia coli*

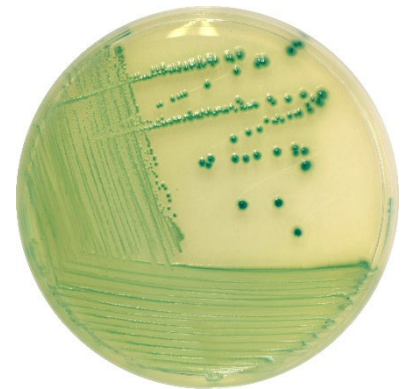
### Growth on selective/differential culture media



**ENDO AGAR**  
Red colonies, red medium,  
golden sheen



**TERGITOL AGAR**  
Yellow colonies with yellow  
zone. Sometimes with rust  
coloured centre



**TBX (Tryptone Bile X-  
glucuronide) AGAR**  
Blue-green colonies

Growth on selective/differential culture media



CTSM (Sorbitol MacConkey agar with Cefixime Tellurite) AGAR  
Pink colonies



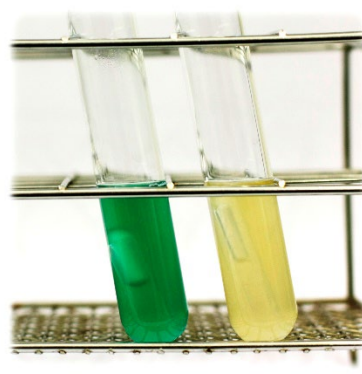
VRBGA (*Violet Red Bile Glucose Agar*) AGAR  
Red-purple colonies surrounded by purple haloes



VRBL (*Violet Red Bile Lactose Agar*) AGAR  
Red-purple colonies with or without halos



EC Broth  
Turbidity with gas production



Left: Brilliant Green Bile Lactose Broth  
Right: Laurylsulfate Tryptose Broth  
Both: Turbidity with gas production



MYP (Mannitol Egg Yolk Polymyxin) AGAR  
Growth inhibition